
3-in1 Facial System (C3726)

**Steamer, Mag Lamp, and
High Frequency**





universal companies
YOUR ONE SOURCE SPA SOLUTION

© Universal Companies, Inc. 2011
All rights reserved for copyright purposes.

No reproductions by print or photocopies are allowed without written permission.

3-in-1 Facial System

Congratulations on the purchase of the 3-in-1 Facial system from Universal Companies, Inc. We hope this unit brings maximum efficiency and convenience to your salon or spa and quickly becomes a true asset to your skin care business.

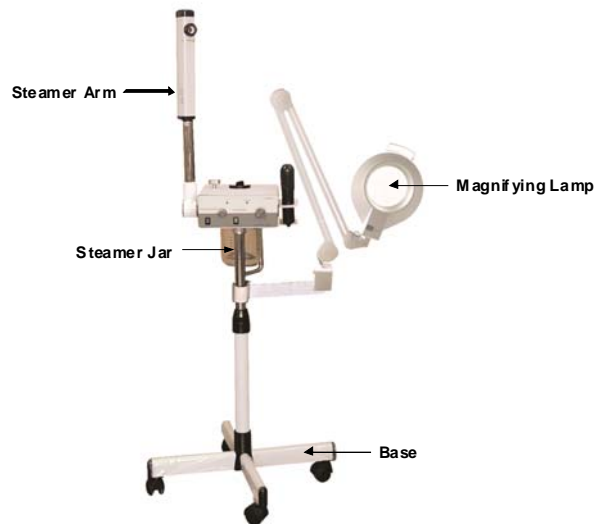
This 3-in-1 Facial system is unique in that it combines the high frequency function with a steamer and a magnifying lamp.

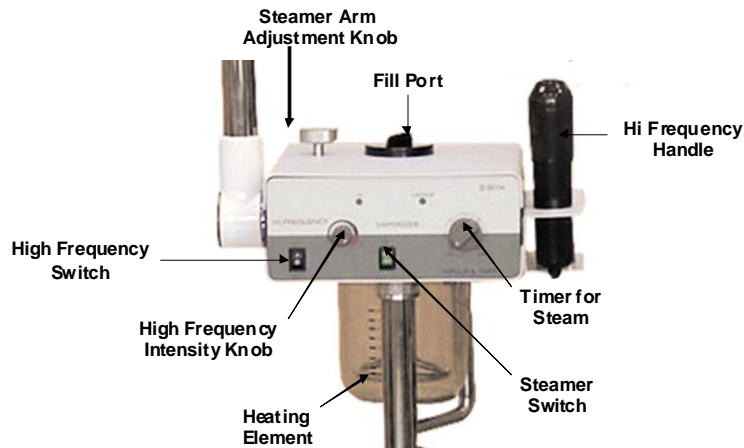
This manual is intended to assist your staff in assembling and using the 3-in-1 Facial system properly. Universal Companies urges you to read this manual thoroughly before operating the unit.

Note: The 3-in-1 Facial system is intended for professional use only. Please check with the licensing board in your state to obtain specific certification requirements for operating this equipment. This manual is not intended to replace classroom instruction for skin care procedures, nor is it intended to replace proper Esthetics or Cosmetology training for the use of general skin care equipment.

We thank you for your purchase and hope you enjoy the 3-in-1 Facial system.

Parts/Accessories





Operations/Precautions

FOR PROFESSIONAL USE ONLY

To reduce the risk of electric shock:

- ☐ Always unplug the unit when not in use.
- ☐ Do not use while bathing.
- ☐ Do not place (or drop) into water or any other liquid.
- ☐ Do not reach for a unit that has fallen into water. Unplug immediately.

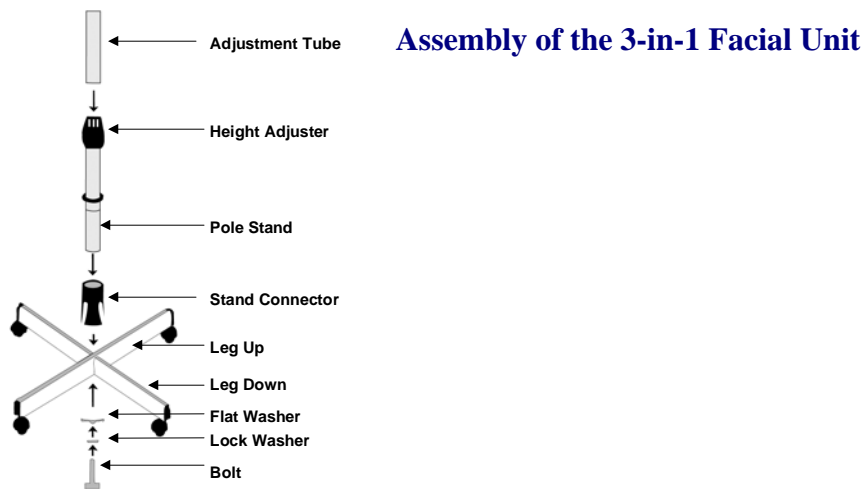
To reduce the risk of burns, electric shock, fire, or injury:

- ☐ Do not leave the 3-in-1 Facial unit unattended when in use.
- ☐ Do not allow children to operate the 3-in-1 Facial unit
- ☐ Extreme caution should be used when 3-in-1 Facial unit is used on or near invalids.
- ☐ The 3-in-1 Facial unit should be used only for its intended purpose as described in this manual.
- ☐ Do not use attachments that are not recommended by the 3-in-1 Facial unit manufacturer.
- ☐ Do not operate the 3-in-1 Facial unit if:
 - It has a damaged cord or plug.
 - If it is not working properly.
 - If it has been dropped or damaged.
 - If it has been dropped into water.
- ☐ If damaged, return the 3-in-1 Facial unit to an authorized service center for examination and repair.
- ☐ Keep the cord of the 3-in-1 Facial unit away from heated surfaces.
- ☐ Do not use the 3-in-1 Facial unit outdoors.
- ☐ Connect the 3-in-1 Facial unit to a properly grounded outlet (preferably a GFCI outlet).

Known Contraindications

Individual contraindications for each function are listed at appropriate places in the manual. Please refer to them as you read the manual and/or perform individual treatments.

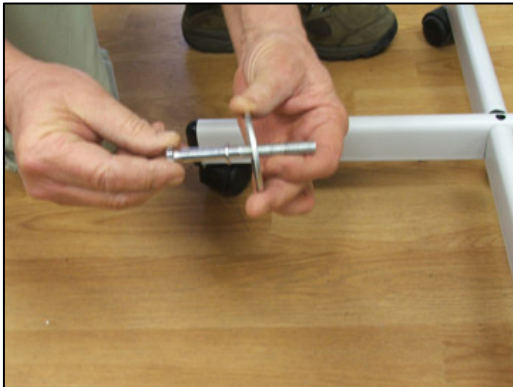
There may be other, unknown contraindications for this Product. For this reason, you should always recommend that your Client discuss the use of this Product as part of their spa treatment program with their health care professional before commencing treatment. Universal Companies, Inc., its officers, directors, employees and vendors cannot be responsible for any claims, damages, injuries or expenses arising from your Client's use of this Product prior to discussing it with their health care professional or from disregarding the Product's instructions, and you and your Client agree to hold Universal harmless from any such claims. We and our suppliers care about the health and beauty of your Clients. While we make every reasonable effort to maintain strict quality control and training standards, every client is unique and spa treatments do affect people differently. Unless you advise us otherwise, we have to assume that your Client has discussed your spa treatment plan with their health care professional and secured their approval. Doing this will make your Client's spa experience safe and will be supportive of their overall emotional and physical well being. After all, that is the goal of us all.



1. To assemble the stand base, select the two cross pieces (Leg-Up and Leg-Down). The Leg-Down has a slot at the top and the Leg-Up has a slot at the bottom. Slip the Leg-Up downward into the slot in the Leg-Down.



2. Place the flat washer and lock washer on the 4" bolt.





3. Insert the bolt (with washers in place) in the bottom of the Leg-Down portion of the Stand Base.



4. Slip the Stand Connector (black piece) over the base of the Stand Pole.



5. Slip the Pole Stand down over the Leg-Up portion of the Stand Base.



6. Using a wrench, tighten the bolt snug. Caution: do not over tighten.

7. Turn the Height Adjuster (the black ring located at the top of the Pole Stand) clockwise to loosen it enough to accept the Adjustment tube.

8. Place the chrome Adjustment Tube inside the Height Adjuster. Press it downward to desired height, and tighten the Height Adjuster (by turning it counterclockwise) to hold Adjustment Tube in place.

(Note: To avoid injury, do not stand over the apparatus when doing this. There is a spring inside the lower tube and if you aren't holding the upper tube tight while tightening it, it can fly up and hit you in the face or upper body.)



9. Slip the arm for the Mag Lamp over the Adjustment Tube.



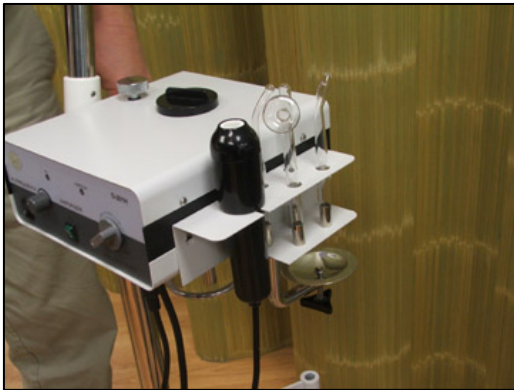
10. Place the Steamer Head on the Adjustment Tube.



11. Loosen screws on the side of the steamer head slightly. Slip the holder for the high frequency handle and probes over the screws and tighten.

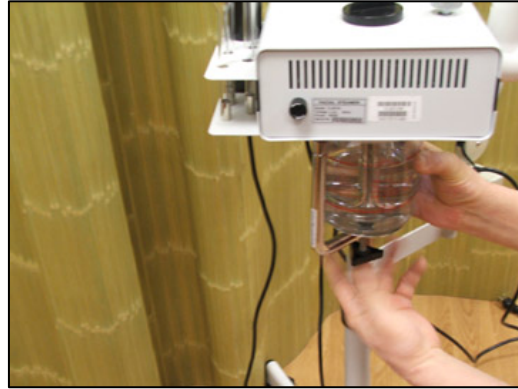


12. Plug the High Frequency Handle into its outlet.



13. Insert the High Frequency Handle and probes into the holder.

14. Remove the Steamer Jar from the package, wash it to make sure there is no packaging debris inside and no residue that may contaminate the unit.
15. Place the Steamer Jar Gasket on the Steamer Jar.
16. Slip the jar up over the heating element and secure it in place with the Retaining Plate.



17. Slip the magnifying lamp into its holder.

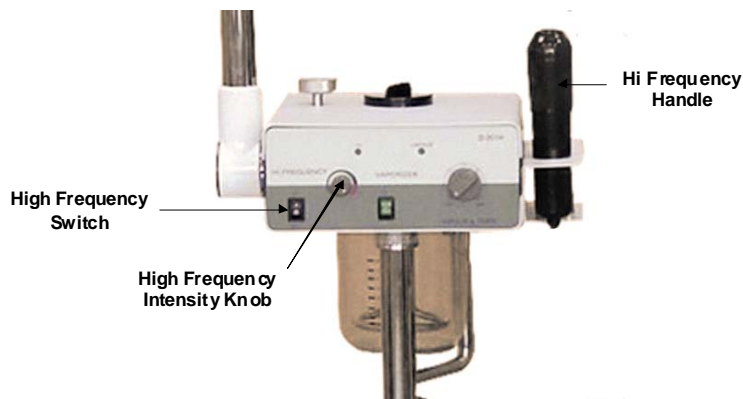


High Frequency

High Frequency uses ultraviolet rays on the skin's surface to increase glandular activity, stimulate circulation of the blood, create germicidal action, increase metabolism, and aid in deeper penetration of product into the skin. This unit includes four electrodes: Acne Sparking, Spoon, Mushroom, and Straight.

The high frequency instrument emits ultraviolet rays that can benefit the skin in many ways. The use of ultraviolet rays on the skin's surface stimulates glandular activity, increases the circulation of blood, creates germicidal action, increases metabolism, helps skincare products penetrate deeper layers of skin, and creates deep heating without affecting the muscles.

Parts/Accessories



Operations and Precautions

- ❑ Do not use high frequency on a client who is pregnant, has a pacemaker, or has a history of heart disease or epilepsy.

Instructions for Use

How the Electrodes Function

High frequency energy causes some of the atoms inside the glass tube to become charged. Electrons are forced off the atoms, creating charged particles called ions. Electricity flows through the charged particles. Ultraviolet rays are created within the tubes causing the argon gas to glow.

The electrodes are designed for the following use:

- Acne Sparking Electrode – treats acne and inflammation
- Spoon Electrode – provides ultraviolet rays to rejuvenate healthy skin
- Mushroom Electrode – treats large, level areas of the face or body
- Indirect Electrode – promotes blood circulation on any part of the face or body

Prior to Beginning Direct or Indirect Treatment

1. Both the client and the esthetician should remove all jewelry.
2. Make sure the client cannot touch any metal objects – be particularly careful that they are not touching the metal frame of the treatment chair or couch.
3. The client should remove his/her contact lenses before beginning this procedure.
4. Explain to the client what they will feel during the high frequency treatment, describing the sparking sensation in detail.
5. Use of electrodes.
 - Before inserting an electrode in the high-frequency handle, inspect the slot where the electrode will be inserted to make sure it is free of dust and/or debris. If there is any dust or debris, remove it.
 - Check the electrodes to ensure that they are firmly seated in the handle (to prevent possible damage to the electrodes).
 - Do not touch the metal end of the electrode.
 - Clean the end with alcohol pad and allow drying before placing electrode in handle.
 - Do not use excessive force when pushing the electrodes into the high-frequency handle. This could break the electrodes.
 - Always insert and pull the electrode straight in or out of the handle. Never twist.
 - Turn the high-frequency unit “Off” when changing electrodes.

Direct Technique (soothing)

1. If you have not already done so (as part of another treatment), apply a non-flammable product (cream or mask) to the skin to provide slip for the glass probe as it moves over the client's skin.

*Note: Only use products that are water-soluble when using high frequency. **DO NOT** use any products that contain alcohol or any other flammable liquid. Instead of product, you may use a thin piece of gauze on the face to provide slip.*

2. Turn the intensity of the current as low as it will go before turning the high-frequency unit "On" or "Off".
3. When performing this technique:

- Hold the high-frequency handle below the taper while performing the technique. Touching the handle above the taper will draw current from the electrode.
- Turn the high frequency unit "On".
- Place your finger on the electrode.
- Position electrode on client's skin.
- Remove finger from the electrode.
- Set the intensity level after you have positioned the electrode on the client's skin.

Note: Set the final intensity according to client's comfort level, skin condition, and sensitivity level. Monitor the client's comfort level closely.

Note: If you break contact with the client's skin, repeat Step 3.

4. Proceed with the treatment. Using one of the facial electrodes, start at the neck and using small circular movements, work upward to the jaw, cheeks, chin, nose and forehead.



Indirect Technique (soothing)

1. The client should hold the indirect (straight) electrode securely with both hands. One hand should hold the handle while the other hand grips the tip of the electrode.
2. Cover the electrode with cheesecloth or 1-ply gauze for comfort if needed.
3. Before turning the high-frequency unit “On”:
 - Check to ensure that the client is holding the electrode securely.
 - Make contact with the client by placing one hand on his/her skin at the treatment area.
 - Proceed with massage techniques.
4. Turn the high-frequency unit “Off” before removing both hands from the client, whether ending the treatment or changing treatment areas. Do not break contact with the client’s skin while current is flowing.
5. The client should feel little or no sensation from the high-frequency current during this technique.

**Sparking/Fulguration Technique (stimulating)**

The client will feel a slight sensation during this technique, due to the exchange of the current between the electrode and the client’s skin. Keep the intensity well within his/her comfort level. This technique requires the acne-sparking electrode.

1. Insert the Acne Sparking Electrode into the handle.
2. Turn the high-frequency power switch to the “On” position.
 - The high-frequency current should be at the lowest setting before turning the switch “On”; in other words, the intensity control knob should be turned to the far-left position.
3. Hold the electrode a fraction of an inch away from a pustule until you see a slight spark “arc” between the electrode and the skin.
4. Slowly increase the intensity of the current by turning the intensity control knob until the client’s comfort level is achieved.
5. Treat each pustule or comedone for approximately 15-20 seconds each until all have been treated.
6. End the procedure by turning the intensity control knob to its lowest setting.
7. Place the high-frequency power switch to the “Off” position.

Caring for Your High Frequency

To clean your high frequency electrodes, use hospital-grade disinfectant on the glass, then rinse thoroughly. Wipe metal parts clean with alcohol and place in sterilizer for 30 minutes. Keep all electrodes covered until needed.

Caution: Before treatment, your client should remove all jewelry. It is important to keep your client away from all metal objects while the high frequency is in operation. Do not apply the electrodes to any area of the skin for long periods. Do not use a lotion with alcoholic content. If you wish to use a lotion that contains alcohol, use the high frequency first, and apply the lotion later.

Troubleshooting

If there is no current, check:

- ☐ That the switch is set to the “On” position.
- ☐ The handle cord is securely plugged into the unit.
- ☐ If one of the electrodes does not work as it should, test the other three to see if they have the same problem. If it’s just the one electrode, replace the electrode. If it is all three, replace the handle.
- ☐ The fuse in the back of the unit is working.

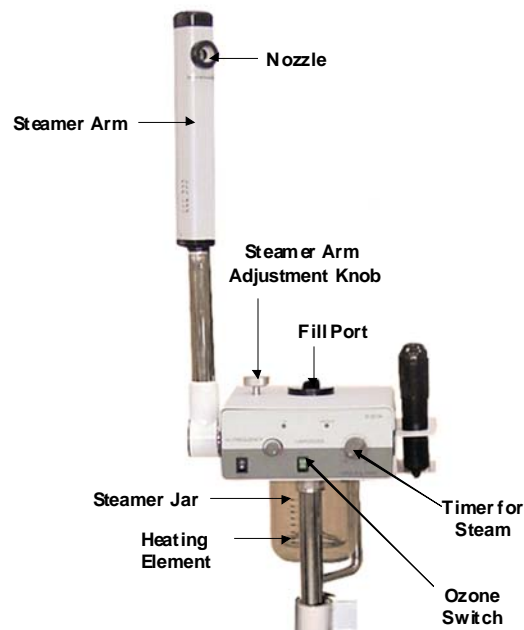
Facial Steamer

Many estheticians consider the facial steamer the most important piece of equipment in the business. This steamer is an ion facial steamer that automatically powers off when the water level is low, and it features immediate water refill during use. The Facial Steamer does not have a beeper, allowing for silent operation. It has a water capacity of 700 ml (almost 3 cups). It also has ozone capability.

Benefits

- ☐ Softens cells so they can be removed more easily during exfoliation or massage.
- ☐ Opens pores and follicles for a deeper cleansing.
- ☐ Stimulates circulation.
- ☐ Softens sebum and other debris such as dirt and makeup.
- ☐ Assists in eliminating toxins.
- ☐ Warm steam relaxes skin and tissues, making extractions easier.
- ☐ Helps oxygenate skin because of increased circulation.
- ☐ Temporarily softens lines and wrinkles.
- ☐ Ozone provides antiseptic effect on the skin. Aids in treating acne and other skin problems.
- ☐ Helps relieve head and chest congestion.
- ☐ Can provide aromatherapy benefits.

Parts/Accessories



Operation and Precautions

- ☐ Use only with distilled water.
- ☐ Do not overfill.
- ☐ Do not add cold water to a hot jar!
- ☐ **Fill steamer with water prior to turning it on.**
- ☐ The nozzle of the steamer should never be closer than 12" - 16" to the treatment area.
- ☐ Turn the steamer component "Off" when not in use by setting the timer on "0". This will prevent possible damage due to boiling dry. (The timer acts as the On/Off switch)
- ☐ Check the steamer jar to ensure that it is secure, and that the steamer jar gasket is in place before adding water to the steamer jar.
- ☐ **Turn the steamer off and unplug it before filling the water jar.**
- ☐ **Never put essential oils or herbs directly into the water.**
- ☐ Do not move the unit by the steamer arm.

Instructions for Use

1. Prior to every client, check the level of the water in the steamer jar and refill if necessary.
 - Open the round, black cap on the top of the unit.
 - Pour distilled water into the glass jar through the fill port until the water level reaches the red line. Do not add water above this point. If you overfill the steamer, spitting can occur.
 - **Do not add cold water to a hot jar.** Water should be at least room temperature (or warmer).
 - **Never run the steamer without water in the jar and the jar in place.**
 - **Turn the steamer off before refilling the water jar.**
2. To use essential oils:
 - **Do not put essential oils in the water jar.**
 - Unscrew the steam nozzle cap, remove the felt strip, and place 2-3 drops of the essential oil on the felt strip.
 - Put a few drops of an essential oil on a felt strip. The amount of oil you use will depend on the aromatic strength of the oil.
 - Tuck the felt strip in the groove inside the nozzle.
 - Replace the felt strip and steam nozzle cap.
 - To change oils: remove the felt strip and place a new essential oil on a clean strip.
 - Suggestion: When changing oils –remove the felt strip and place it in a plastic bag, label with the scent and put in the freezer for future use.

Note: Do not attempt to add to or change the essential oils on the felt strip while the steamer is on, as this could result in injury!
3. Pre-heat the distilled water by setting the timer for 10 minutes.

4. You may want to place eye pads over the client's eyes to protect them during steaming.
5. After the steamer begins producing steam, reset the timer to the desired treatment time based on client's skin type and sensitivity level.



Time Settings for Steam for Various Skin Types:

Normal Skin	8 – 10 minutes
Oily Skin	12 – 15 minutes
Sensitive/Dry Skin	3 – 5 minutes
Rosacea or couperose (broken capillaries)	3 – 5 minutes

6. Reposition the steam nozzle in accordance with client comfort and skin condition. Normally, the nozzle should be positioned towards the center of the client's face approximately 12 to 16 inches away from the face depending on the skin type and the condition being treated. Note: Never position the steamer so that the nozzle is closer than 12" from the face. If the client has large couperose areas or their skin is overly sensitive, you may have to move it much farther away.



To position, the steamer arm, which will move up and down 90°, loosen the silver knob on top of the unit. Move the arm to the desired position and tighten the knob.

Rotate the steamer head to desired position. It rotates left and right 180°.



7. If desired, turn the Ozone Light Switch on during last 5 minutes of treatment.

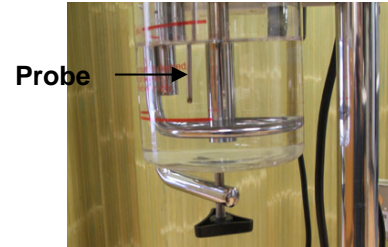
Note: The implementation of the ozone option does not affect the volume of steam, but it does increase the visibility of the steam and adds a mild antiseptic benefit.

8. When you have completed the steaming process, turn off the ozone. Move steamer nozzle away from the client and allow it to time out rather than manually turning the knob to "0".

Caution: Only **distilled water** should be used in the facial steamer. Because tap water contains chlorine and other chemicals and mineral deposits, its use will affect the efficiency and lessen the life of the heating element and the thermal cut off sensor due to the buildup of calcium and mineral deposits. *No other product or liquid should be used in your facial steamer. Failure to adhere to this instruction voids the warranty.*

The facial steamer will turn off automatically when the water level drops below the level of the probe.

When water is added, the unit will start heating the water once again and steam will be produced in a few minutes. Be very careful when adding water. DO NOT add cold water if the jar and the water inside are hot. You could break the jar.



Caring for Your Facial Steamer

Note: If you do not clean your steamer and take care of it properly, it may begin to spit hot water due to the buildup of mineral deposits.

1. Allow the steamer to cool for at least 15 minutes before cleaning it.
2. Do not leave water in the steamer overnight or over the weekend. Empty and rinse the steamer jar every day. The jar is dishwasher safe. Be sure to use a non-foaming detergent. Make sure that all detergent has been thoroughly rinsed off the jar before it is replaced.

To remove the jar: Hold the glass jar in one hand, turn the knob clockwise with the other. Move the jar retaining-arm hinge away and ease the glass jar out of its position.
3. Dry off the heating element with a hand towel.
4. Before replacing the jar, make sure it is dry and that the rubber seal is clean and dry.
5. At least once a week, clean the steamer jar using a solution of white vinegar and water.
 - Remove the steamer jar.
 - Pour 2 Tablespoons of vinegar directly into the jar (not through the fill port).
 - Put the steamer jar back into its normal operating position.
 - Fill the steamer jar with distilled water.
 - Turn the steamer on. Allow it to heat and produce steam for 1 to 3 minutes in a well-ventilated space.
 - Do not turn on the Ozone feature during the cleaning process.
 - Turn the steamer off and allow it to cool down for 15 minutes.
 - Remove the steamer jar and drain all the vinegar/water solution.
 - Replace with clean distilled water and operate the steamer for 15 minutes to get rid of the vinegar scent.
 - Do not allow the vinegar solution to remain in the jar for a long period of time before steam or after steam. Vinegar can corrode the heating coil.
 - If a vinegar scent remains, drain the water and repeat the process. Alternatively, add a drop or two of Clove Essential Oil to an aromatherapy strip and insert it inside the steam nozzle cap. Turn the steamer on for a few minutes. This should get rid of the vinegar odor.
 - When you have finished cleaning the steamer, remove the water and dry the jar and gasket.

Note: Because of the vinegar odor, it is a good idea to clean the steamer in a workroom away from the treatment rooms. If possible, open a window to help dissipate the fumes.

6. Clean the heating element with a damp cloth to remove any excess vinegar, and reassemble the unit.

7. Use a hospital-grade disinfectant to clean the outer surface of the steamer unit.
8. Once you have removed the distilled water and vinegar mixture from the jar, rinse with water and wipe the jar dry with a towel.
9. Store until needed for further use.

Trouble Shooting

If you experience problems with the operation of your steamer, please consult this troubleshooting guide before calling technical services at 1-800-558-5571.

1. If the unit quits producing steam, make sure that there is an adequate amount of water in the jar. If it drops below the bottom of the water level sensor (close to the lower red line), the unit will quit producing steam.
2. If unit does not come on and there is an adequate amount of water, check to ensure that:
 - The steamer unit is plugged into an operating outlet.
3. If there is no steam, check to ensure that:
 - There is an adequate amount of water.
 - The steamer is plugged into an operating outlet.
 - The timer is turned past the 10 minute mark.
 - The steamer jar gasket, located at the top of the jar, is in place, and not worn.
 - The unit has been preheating for at least 5-8 minutes.
 - The water is boiling and no leaks are present.
 - If there are no leaks and the water is boiling, steam is probably being emitted. You just can't see it. Turn on the Ozone lamp to make the steam more visible. If you still can't see steam, check the Ozone Lamp to see if it is burning. If it is not burning, it will need to be replaced.
4. If the ozone doesn't work properly, check to ensure that:
 - The ozone switch is in the "On" position (the light will be on).
 - The ozone bulb is burning steadily. If operating properly, there will be a constant pale blue light inside the steamer arm.
 - To replace the Ozone bulb, you will need a Phillip's Head Screwdriver.
 - Unplug the steamer.
 - Remove the steamer and lay it on a table.
 - Using a Phillips Screw Driver, remove the two screws at the bottom of the steamer arm. Note: they are located on either side of the housing.
 - Remove the screw in the cap at the top of the steamer arm.



- Remove the screws found in side the top of the steamer arm.



- Slide the housing off to expose the bulb and starter.



- To remove the bulb, cut the strap that was used to secure the bulb during shipping.



- Turn the bulb a one-quarter turn and remove it. Insert a new bulb and turn it one-quarter turn to secure it in place.

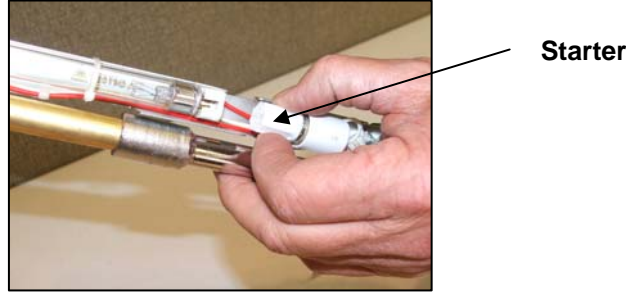


- Optional: attach a new strap to secure the bulb. This is not absolutely necessary. The original strap was there to secure the bulb during shipping. Unless you are shipping your 3-in-1 to another location, this step is not required.



- Reverse the procedure – fit the housing over the top of the steamer tube, reattach the screws, slip the ozone cover back over the arm, replace the steamer cap, and insert and tighten screws.
- Plug in the unit and make sure the bulb lights up. Do not look directly at the light. ***The light emitted can cause damage to the eye.***

- If the bulb doesn't work, you may need to replace the starter. It is located just below the UV bulb. Follow the previous steps to access the starter, unscrew it, and replace it.



5. If there is leaking around the jar, check the steamer jar and gasket:

- Gasket
 - Check to see that the gasket is properly positioned.
 - If the gasket is properly positioned, make sure it is not deteriorating or worn out.
 - If the gasket is deteriorating, replace it.
- Jar
 - Check the jar to see if it is fractured or if there are chips around the edge of it.
 - If the jar is fractured or chipped, discontinue use immediately and replace.

Note: Tighten the knob on the retaining arm assembly to achieve a good seal between the gasket and the steamer jar.

6. If the steamer is spitting from the steam nozzle, check to ensure that:

- The steamer jar is not overfilled.
- The nozzle is not obstructed.
- There is no contamination in the water. If the water appears contaminated:
 - Discard the water in the steamer jar.
 - Clean all parts of the steamer jar assembly (element, gasket, jar, etc.) with a non-foaming cleanser (vinegar and water solution)

Normally a spitting problem is due to the water jar being too full at some previous time and water getting into the system within the arm. If it continues to spit (after checking the items above), do the following to flush out and dry the steamer:

- Run the steamer with the water jar half full.
- After completion, run the steamer a second time with the water jar half full.
- After completion, do not run the machine for 24+ hours.

7. If water is boiling out of the fill space:

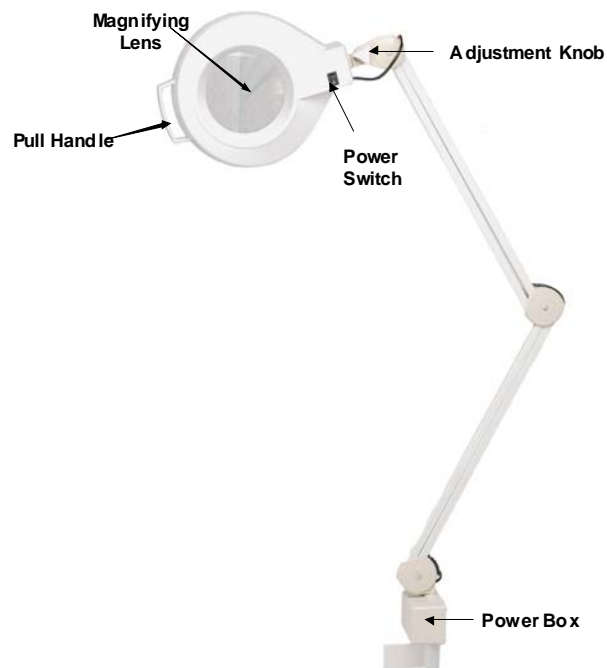
- Immediately discontinue use and call technical services at 1-800-558-5571.

Magnifying Lamp

Most therapists consider the magnifying lamp an important diagnostic tool. Also known as a loupe, it magnifies the face and is used early in the session to analyze the complete treatment area. It is also used to monitor skin reactions throughout the session, and to assist in extractions. These examinations will determine which products and procedures should be used during a treatment.

The magnifying lamp uses a cool fluorescent lamp and will not burn the client's skin. This is a 5-diopter lamp, meaning that it magnifies the area you are examining 50 times. It also has an 8-diopter inset. Its adjustable arm allows you to position the magnifier and the circling tube gives a soft, even light to the subject you are magnifying.

Parts/Accessories



Operations and Precautions

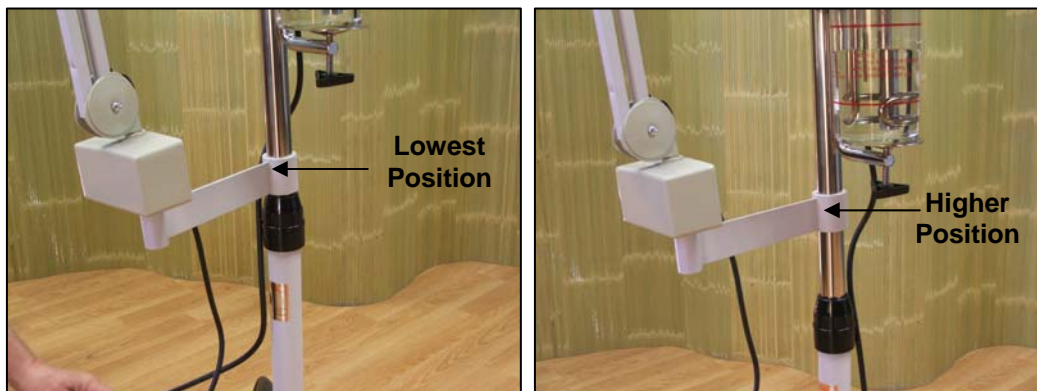
- ❑ Cover your client's eyes with cotton eye pads, gel pads, herbal eye pads, or other eyelid covers while using the magnifying lamp.
- ❑ Do not submerge the lamp or any of its parts in water

Instructions for Use

1. Turn the power switch to the "On" position.
2. Use the position adjustment knob to adjust the lamp over the area of the skin you wish to examine. If you force the lamp into position without using the adjustment knob, you will damage them and the light will not stay in the desired position.

(Failure to use the adjustment knobs on the lamp will void the warranty.)

3. To adjust the magnifying lamp up or down, raise the connector arm. Note that it will not stay in place unless the magnifying lamp is inserted in the connector arm. However, when the magnifying lamp is in place, the connector arm will stay in any position where it is placed.



(Caution: be sure to cover your client's eyes with cotton eye pads or eyelid covers while using the magnifying lamp. Do not submerge the lamp or any of its parts in water. After cleaning, allow lamp to dry thoroughly before further use.)

Caring for Your Magnifying Lamp

After each use, clean your magnifying lamp lens by wiping it with a glass cleaner or 70-80% alcohol. Clean the lamp and arm with a mild cleanser at the end of each day to remove buildup of any product from your hands. This will prolong the life of the instrument.

Note: Do not spray the alcohol or cleaner on the lamp. Spray it on a cloth and then wipe the lamp.

Changing the Mag Lamp Bulb

1. Remove the mag lamp and lay it on a table so that you can work on it easily. Turn it so the bulb is facing upward.
2. Using a Phillips Screw Drive, remove the bulb cover



3. Lift the bulb up and remove the protective plastic braces.



4. Disconnect the lamp at the receptacle. Replace the lamp.



5. Reverse the procedure to finish the task.

Changing the Mag Lamp Starter

1. If the bulb still doesn't work, the starter may need to be replaced.

Note: We suggest that you order a starter when you order a new bulb.

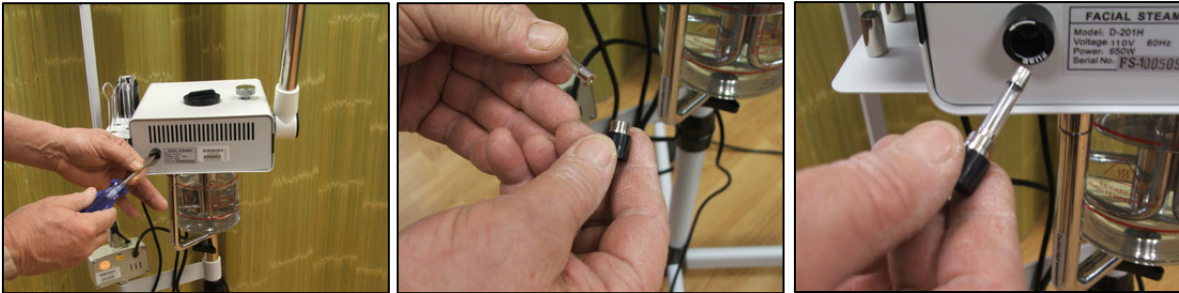
2. The starter on the underneath side of the mag lamp. Unscrew the starter and replace.

**Troubleshooting**

1. If the lamp does not come on, check to ensure that:
 - The magnifying lamp component is properly plugged into a working electrical outlet.
 - The On/Off button on the magnifying lamp is in the "On" position.
 - The bulb is firmly seated in its receptacle.
 - The bulb is working properly. Bulbs are available from Universal Companies, Inc.

Changing the Fuse

1. If the unit is not working, check the fuse. Using a Phillips head screw driver, remove the fuse cover on the back of the unit. Remove the old fuse. Insert a new fuse into the fuse cover and reinsert the fuse into the unit. Tighten.



Replacement Parts

Steamer Parts

CP9095	10 amp Long Fuse
CP1014	Steamer Jar
P9010	Timer Knob
CP9414T	Jar Gasket
CP9413T	UV (Ozone) Bulb
P9013	Starter
CP9083T	Black Nozzle Cap
P93869	Fill Port Cover
CP9445T	Complete Steamer Arm

High Frequency Parts

CP9098	High Frequency Handle
CP9099	Mushroom Electrode
CP1000	Indirect Electrode
CP1001	Spoon Electrode
CP1002	Acne Sparking Electrode

Mag Lamp Parts

CP9420T	Bulb
CP9415T	Starter
CP9421T	Bulb Cover/Mag Lamp Shield
CP9444T	Replacement Mag Lamp
CP9415T	Starter for Mag Lamp

Specifications

- ☐ 110V
- ☐ Heater Coil 650 Watts
- ☐ 60 Hz
- ☐ 8 amps max

Warranty Statement

The manufacturer (the “warrantor”) warrants to the original purchaser that this equipment will be free from defects under normal and proper operation for a period of one (1) year from the date of purchase. This warranty covers all parts and labor for that one (1) year period. This warranty shall not apply to any equipment that has been subjected to abuse, misuse, and alteration of any type or to any defect or damage caused by repair, replacement, substitution or use with parts other than parts approved by the manufacturer.

The manufacturer shall not be liable for the loss of use of this equipment, loss of time or business, inconvenience or any other indirect, consequential, special or incidental damages due to defects covered by this warranty or any implied warranty.

To implement this warranty, contact the dealer from whom you purchased the equipment. If necessary, you will be asked to return all, or the appropriate part, of the equipment. If warranted, the repairs will be performed at no charge and the equipment returned to you. Unit owner must prepay all shipping costs when returning items for warranty service.

This limited warranty is the only written or express warranty given by the manufacturer. This warranty gives you specific legal rights but you may also have other rights, which may vary from state to state or province to province.

Authorized Technical Service Center:

Universal Companies, Inc.
18260 Oak Park Drive
Abingdon, VA 24210
Phone: 1-800-558-5571
Fax: 1-800-237-7199
E-Mail: info@universalcompanies.com
www.universalcompanies.com



C3726M