

Embrace Pedicure Chair

User Manual



FOR QUESTIONS, PLEASE CALL 1-888-708-7131



P.O. Box9068
Canoga Park, CA 91309
818-708-7131 tel / 818-592-0202 fax
sales@belava.com / www.belava.com



Embrace Pedicure Chair

— Warranty & Return Policy —

Belava is not responsible for lost or damaged return shipments. When returning the product, please contact Belava to arrange return's shipment. If you choose your own carrier, please provide us with carrier's contact info & tracking numbers to arrange delivery to our place of business. **Please take care to package the item you are returning to protect it during shipment. Belava reserves the right to reduce the amount of the refund if a product is returned in damaged condition, whether from use or shipment.**

Embrace Pedicure Chair

— Warranty & Return Policy —

Belava One (1) Year Limited Warranty for Pedicure Chairs

We design and build our products with integrity, fine materials and a compulsive attention to detail and we do all this to provide you with many years of satisfaction. Belava offers a warranty that our products will be free of defects in materials and workmanship. Like any other products, our guarantee does not cover damages resulting from abuse or mishandling, or damage during shipping.

Also, as could be expected, component parts, particularly moving parts and wheels, will show wear with use over time and may need to be repaired or replaced. We will be glad to help you with replacing worn parts, or reupholstering, as we manufacture this equipment in our facility in California, USA. Simply contact us - attention Customer Service - explaining the defect and include your name, address, daytime phone number and a copy of your dated proof of purchase. Do not send any products directly to Belava without contacting us first. Let us help you to keep your business not interrupted by assisting you with repairs.

Belava reserves the right to make the final judgment on all claims. Our warranty gives you specific legal rights and you may also have other rights which can vary from state to state.

Returns

If you are unsatisfied with a Belava product you have purchased from us, you may return the product within 30 days of its purchase. For a full refund of the product cost, the product must be in **resalable** condition. We ask that you keep the packaging material as well as pallet provided for up to 30 days if you decide that you want to return the chair. After the 30 days, it is the customer's responsibility to provide a pallet and packaging so that the products are not damaged when being returned.

The refund amount will be reduced by any damages incurred after initial product delivery. A 10% restocking fee will be applied for any returned chair regardless of the circumstance. Original shipping charges are not refundable and the customer is responsible for return shipping charges. **All products must be returned in their original packaging, so we ask you to keep your packaging for at least the first 30 days after purchase.**

Table of Contents:

Pg. 1	Introduction
Pg. 1.....	Important Requirements
Pg. 1	Precautions
Pg. 1	Health Risk Warning
Pg. 2-3	Features
Pg. 4	Specifications
Pg. 5	How to Assemble Foot Rest
Pg. 6	Warranty & Return Policy



Embrace Pedicure Chair

IT IS IMPORTANT THAT YOU READ AND FOLLOW THESE INSTRUCTIONS.

Introduction

Thank you for purchasing Belava Embrace with “No-Plumbing” Pedicure Chair. The Embrace pedicure chair is designed for professional use in nail salons, hair salons, spas, podiatrist offices, medical spas or where pedicure, manicure and facial services are offered.

The Embrace is a state-of-the-art product that embraces the use of disposable liners without having you to worry about sanitizing the footbath for each client. Simply dump the used water out at a nearby sink, toss the used disposable liner then insert a new liner and be ready for your next customer in no time. This chair is also designed to offer a comfortable setting for manicure and facial/wax services.

Please take time to thoroughly read this entire manual before use. If you have any problems or have questions regarding your pedicure chair, please contact Belava’s Technical Support Department at **1-888-708-7131** Monday through Friday 8:00AM to 5:30PM PST. After hours calls are recorded and attended to the next business day.

Important requirements

Your pedicure chair cannot operate efficiently or safely unless it is provided with adequate electrical power. The heater/massager for pedicure and the heater/vibrator for the chair’s cushion confirm to UL STD 1647.

Precautions

- Excessive water temperature is dangerous and should be checked before use.
- Maximum operating water temperature should not exceed 105° F
- Always enter and exit the pedicure chair slowly and carefully.
- This pedicure chair & nail tech stool each have a weight capacity of 350 pounds.
- With proper care, you can enjoy your Embrace pedicure chair for many years come.

Health Risk Warning

Nail technicians should advise clients to consult their physician before using the pedicure chair if there is any evidence of health issues. **If the client experiences any pain or discomfort, immediately discontinue the use of the pedicure chair.**

Embrace Pedicure Chair

— Operating & Maintenance —

Swivel Chair

In order to safely get into or out of the Embrace Chair, simply swivel chair 90° for easy access. Once customer is seated you can swivel chair back to position.

Adjustable Foot Rest & Massager slider

To adjust massager, move massager platform rested on gliders to extend massager unit to appropriate leg comfort. To adjust footrest, simply step on foot pedal; while pressing on foot pedal you are able to adjust footrest’s position by simply pushing the footrest slider in down motion, or bring it up to desired height. After you have accommodated height for the footrest, remove your foot off the foot pedal. The release of the pedal will lock the footrest in position.

Recline Chair

The handle located at the bottom left of the chair when seated. To recline simply push lever and adjust chair to needed position. The release of the lever will keep the position locked.

Operating Heater/Massager

Please read enclosed separate operating manual.

Operating Massage & Heat Remote for Chair

Please read enclosed separate operating manual.

Operating manicure table

Manicure table can be swiveled and turned around the chair for comfortable position. It can be also used as a esthetician’s working table.

CAUTION: Rotating manicure table 360° around chair cushion could cross remote control power cord. Please exercise care.

Cleaning Cushion

Chair upholstered in high quality automotive upholstery vinyl, which guarantees you long useful life when properly taken care of. While this vinyl is sturdy, it should be prevented from contact with sharp objects, which may leave marks or holes. Use regular cleaning solution to clean the surface; you can use auto upholstery buffing solution to restore the shine of the vinyl.

AVOID: Contact with alcohol and acetone.

Cleaning Manicure Table

To clean we recommend using a soft cloth, with any household cleaning or disinfecting solutions.

Cleaning Heater/Massager

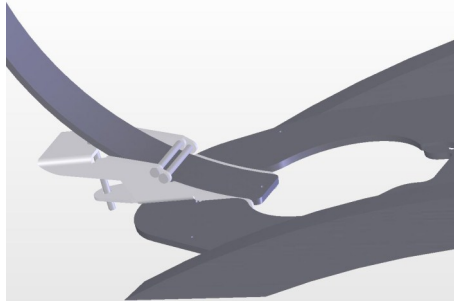
To clean we recommend using rubbing alcohol, household cleaning or disinfecting solution.

Embrace Pedicure Chair

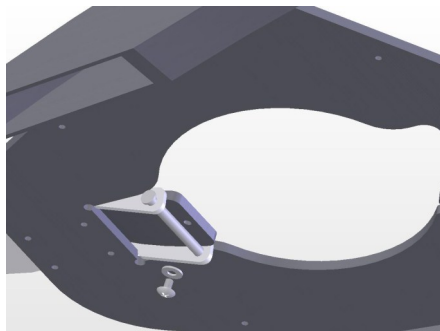
— How to Assemble Foot Rest —



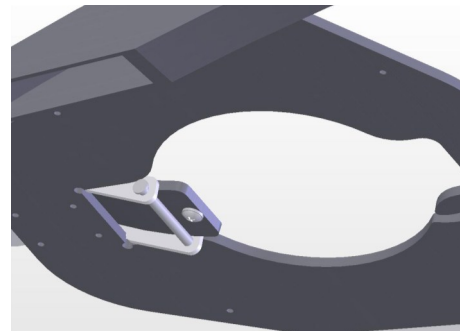
Step 1
Unscrew the Stopper located at the end of the Foot Rest Arch



Step 2
Insert the Foot Rest Arch into the Foot pedal following the direction on the pre-inserted pink paper



Step 3
After inserting Foot Rest Arch into the Platform, screw the Stopper back into the end of the Foot Rest Arch



Final look for Step 3

Embrace Pedicure Chair

— Features —



1. Cushion, enhanced with heat & vibration
2. Arm Rest
3. Pivoting Manicure Table; rotates 360° around cushion
4. Remote Control to operate heat & vibration settings for seat
5. Manicure Table Arch
6. Adjustable Foot Rest
7. Foot Rest Arch
8. Nil Tech Stool
9. Lever for Hydraulic pump in stool
10. Wheels for Stool
11. Foot Pedal
12. Heater/Massager, equipped with heat & vibration
13. Heater/Massager slider
14. Gliders
15. Platform
16. Wheels for Stool

Embrace Pedicure Chair

— Features —



Plush and extra high back fully reclines for extended service: offer eyebrow waxing, or facial treatments while keeping clients in comfortable setting.



Adjustable manicure table rotates 360°



Adjustable manicure table pivots 360°



Adjustable foot rest



Belava heater/massager slides in and out



Turn on heater, and clients can enjoy the warmth of the water without getting cold while getting a pedicure.



Clients can relax their feet while you are performing manicure.

Embrace Pedicure Chair

— Specifications —

Embrace Chair measures: 48" x 34" x 45.5" (H x W x L)

Embrace Chair fully reclined measures: 48" x 34" x 75" (H x W x L)

Swivels up to 360° for easy in and out access

Manicure table measures: 1" x 11 ½" x 22 ½" (D x W x L); Manicure table swivels 360°

Chair Seat across: 23"

Length of Seat: 20"

Arm rest to arm rest: 29 1/2 "

Backseat height: 28"

Seat from floor to top: 44 ½ "

Chair Platform Length: 47 ¼"

Chair Platform Width: 23"

Chair Platform Height: 5"

Footrest Length: 16 ½"

Footrest height from floor to top: 22 ½"

Chair Seat Weight: 50 lbs

Platform Weight: 45 lbs

Foot rest Weight: 10 lbs

Weight Capacity: 350 lbs

Chair Weights: 105 lbs

Power Requirements: 120V DC Adaptor, 1.5 Amps, 50-60 HZ (USA).

Note: Due to continuous improvements, all specifications are subject to change without notice. All dimensions and weights are approximate.