

Intensive In-Depth Protocol

Patch Test

The Intensive product contains ingredients which may cause skin irritation or allergic reactions on certain individuals. A preliminary patch test should be made 24 to 48 hours prior to performing the Intensive service.

Before administering the patch test, wash and dry hands and then apply gloves. Using soap and water, cleanse and rinse a small area of the client's skin behind the ear or on the inner surface of their forearm. Following the preparation instructions, mix the Intensive tint and developer using the 1:1 ratio. Apply the mixture to a small area behind the client's ear or their inner forearm and allow to set for 2 minutes. Remove the mixture with a cotton pad moisturized with water. Advise your client to return in 24 to 48 hours. If no irritation or inflammation of the skin is apparent, it is usually assumed that no hypersensitivity to the tint exists.

Pro Tip: If a reaction occurs during the patch test, such as intense stinging, irritation, rash, or a burning sensation on the skin, rinse the skin immediately and discontinue use. If client experiences mild respiratory irritation, he or she should seek immediate medical attention, and the client should consult a physician prior to having the service again. If, during the days following the patch test, itching, redness, or spots on the skin occurs, swelling of the eyes, face, or skin occurs, it is recommended that the client consult a physician.

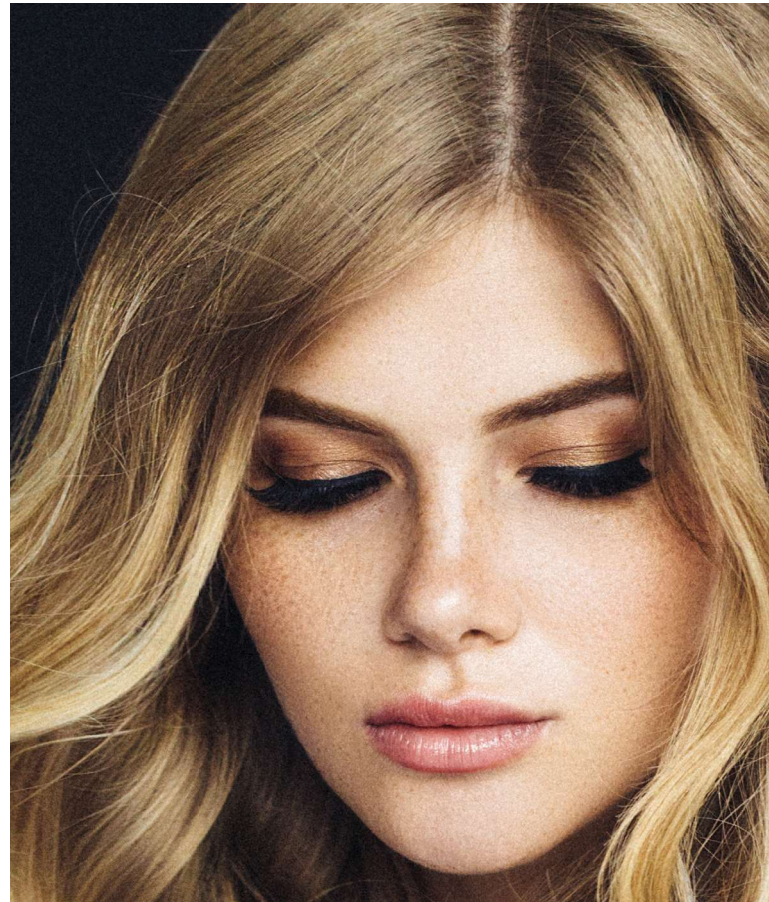
Intensive

Intensive In-Depth Protocol

Procedure for Performing the Intensive Lash Service

Products Needed:

- Intensive Developer (3%)
- Intensive Tint (color of choice)
- Intensive Tint Remover
- Intensive Relaxing Eye Cream
- Intensive Foaming Makeup Remover
- Intensive Brush
- Plastic Cup or Glass Dappen Dish
- Gloves
- Wooden or Plastic Mixing Sticks
- Rubber mixing bowl
- Cotton rounds or esthetic wipes
- Tissues
- Eye wash or eye wash station
- Unwaxed or Waxed Protection Papers or Re-usable Silicone Eye Pads
- Cotton Swab
- Timer



Intensive

Intensive In-Depth Protocol

Pre-Service

- Developing time will differ depending on temperature fluctuation, the texture and coarseness of the client's hair, and the hair's original color. The normal time for developing is 10 minutes for lashes. If the eyelashes are not dark enough, you can reapply Intensive and allow to develop an additional 10 minutes. Intensive should only be applied the first time and then a second time if necessary to achieve the desired results.
- If appropriate, the client should remove their contact lenses or glasses at this time, and the client's hair should be pulled back from the face.
- Remove the client's makeup from eyes and eyelashes if necessary.
- Prep the client's lashes
- The client should be comfortable and sitting upright with head slightly tilted back. Do not apply the product to the client with their head in a fully reclined position, as this could increase the risk of the product getting into the eyes, which could cause irritation.

Intensive

Intensive In-Depth Protocol

Step 1: Apply gloves

Step 2: Apply Intensive Foaming Makeup remover to cotton round or esthetic wipe.

Step 3: Using a downward motion, cleanse eyelashes thoroughly with Intensive Foaming Makeup remover. Lashes should be free of oil and makeup before applying the Intensive product. Make sure that client's lashes are completely dry before beginning the tinting service.

Step 4: Using a 50/50 or 1:1 ratio, mix equal parts Intensive Cream Developer and Intensive Tint in plastic cup and stir with mixing stick until the consistency is that of a creamy paste. The mixture should not be too thin or too thick.

Step 5: Apply either the Intensive Un-waxed or Waxed Eye Protection Papers by instructing the client to look up. Apply a thick layer of Relaxing Eye Cream under the lower eyelid. Then place the protection paper under the lashes of the lower lid, which will prevent the Intensive product from staining the skin. The cream will prevent the protection paper from moving.

If preferred, the Intensive Silicone Eye Pads can be used in place of the Intensive un-waxed or waxed protection papers. The non-slip, self-adhesive silicone pads are skin friendly, easy to use, and comfortable. They can be used close to the lashes under eye to protect the skin from staining during the Intensive tinting service. These innovative pads can be washed and are re-usable up to 100 times.

Pro Tip: Give your client a few moments to adjust to the eye pads and ensure the eye protection papers are not so close to the client's eyes that they cause the eyes to water.

Step 6: Using the Intensive brush, apply the Intensive mixture to lower lashes first on both eyes. Make sure the product covers lashes, including those at the corners of the eyes, from base to tip. When lower lashes are completed, instruct the client to close his or her eyes until the application and removal process is completed. Using the applicator brush, apply Intensive mixture to upper lashes from base to tip. Again, make sure the corner lashes are covered by using a tint brush, mascara wand, or disposable lipstick brush.

Intensive

Intensive In-Depth Protocol

Note: Alternately, you may use a disposable mascara wand or disposable lipstick brush rather than the Intensive applicator brush.

Pro Tip: The Intensive mixture should be applied with care and precision, and in a professional manner. There is no reason for this to be a messy service.

Step 7: Start timer for 10 minutes.

Pro Tip: If the Intensive product accidentally gets into the eyes, take your client to an eyewash station and flush eyes with plain water immediately! If you do not have an eyewash station, flush the eye with saline solution, warm water, or eye wash and pat dry. The client should not rub their eyes as it might cause further irritation. If no irritation occurs, you may reapply the product immediately.

Pro Tip: If any Intensive product accidentally gets onto the face, remove it as soon as possible with warm soap and water. Do not use the Intensive Tint Remover directly on the lashes, eyelids, or eye area.

Pro Tip: As the product develops, it may expand and migrate beyond the desired area of the eyelashes and onto the lids or eye area. As this occurs, you may wipe the expanded product off the skin using a cotton swab, cotton round, or esthetic wipe. Remove the excess product around the eye area to prevent discoloration or temporary staining of the skin.

Step 8: Remove eye protection papers from under eye area.

Intensive

Intensive In-Depth Protocol

Step 9: While your client's eyes are closed, use a round cotton pad dampened with water in a downward motion to remove product until no residue is visible. Hold tissue near eye area to capture any excess water.

Pro Tip: After all of the Intensive product has been removed from your client's lashes, offer them a round cotton pad dampened with water and a dry cotton pad so that they are able to wipe their eyes for additional comfort.

Step 10: Using your ring finger, gently apply a sparse amount of the Intensive Relaxing Eye Cream to the client's orbital bone or eye socket directly below the client's lower lashes as an additional refreshing and soothing enhancement.

Step 11: Hand your client a mirror so they can see their fabulous new look!

Pro Tip: If you get Intensive tint on your hands while mixing, use a cotton ball dampened with Intensive Tint Remover to remove the tint. Wash your hands with soap and water immediately.

Intensive

Intensive In-Depth Protocol

Procedure for Performing the Intensive Brow Service

Products Needed:

- Intensive Developer (6% or 3%)
- Intensive Tint (color of choice)
- Intensive Tint Remover
- Intensive Relaxing Eye Cream
- Intensive Foaming Makeup Remover
- Intensive Brush
- Plastic Cup or Glass Dappen Dish
- Gloves
- Wooden or Plastic Mixing Sticks
- Rubber mixing bowl
- Cotton rounds or esthetic wipes
- Tissues
- Cotton Swab
- Timer



Intensive

Intensive In-Depth Protocol

Developing time for the eyebrows will differ depending on temperature fluctuation, the texture and coarseness of the client's hair, and the hair's original color. Although the normal time for developing brows is 3 minutes, please note that color results may vary based on client's hair color. If the eyebrows are not dark enough, you can reapply the Intensive tint and allow to develop for additional minutes. Intensive can be re-applied to the eyebrows if necessary to achieve the desired results.

The client should be comfortable and sitting upright with head slightly tilted back. Do not apply the product to the client with their head in a fully reclined position as this could increase the risk of the product getting into the eyes which could cause irritation.

Step 1: Apply gloves

Step 2: Apply Intensive Foaming Makeup remover to cotton round or esthetic wipe.

Step 3: Using a downward motion, cleanse eyebrows thoroughly with Intensive Foaming Makeup remover. Eyebrows should be free of oil and makeup before applying the Intensive product.

Step 4: Using a 50/50 or 1:1 ratio, mix equal parts Intensive Developer and Intensive Tint in plastic cup and stir with mixing stick until the consistency is that of a creamy paste. The mixture should not be too thin or too thick.

Step 5: Using the Intensive Brush, apply the mixture to the client's eyebrows. When applying to eyebrows, make sure eyebrow hair is completely covered, but do not press the product into the skin.

Note: Alternately, you may use a disposable mascara wand or disposable lipstick brush rather than the Intensive applicator brush.

Pro Tip: The Intensive product should be applied with care and precision, and in a professional manner. There is no reason for this to be a messy service.

Intensive

Intensive In-Depth Protocol

Step 7: Start timer for 3 minutes.

Pro Tip: If the Intensive product accidentally gets into the eyes, take your client to an eyewash station and flush eyes with plain water immediately! If you do not have an eyewash station, flush the eye with saline solution, warm water, or eye wash and pat dry. If no irritation occurs, you may reapply the product immediately.

Pro Tip: If any Intensive product accidentally gets on the face, remove it as soon as possible with warm soap and water. Do not use the Intensive Tint Remover directly on the lashes, eyelids, or eye area.

Pro Tip: As the product develops, it may expand and migrate beyond the desired area of the eyebrows. As this occurs, you may wipe the expanded product off the skin using a cotton swab, cotton round, or esthetic wipe. Remove the excess product around the eye area to prevent discoloration or temporary staining of the skin.

Step 8: Use a round cotton pad dampened with warm water in an upward and outward motion to remove product from the brows until no residue is visible.

Step 9: Check the color of the brows. If the eyebrows are not dark enough, re-apply and allow them to process again until the desired color is achieved.

Step 10: Using your ring finger gently apply a sparse amount of the Intensive Relaxing Eye Cream to the client's orbital bone or eye socket directly below the client's lower lashes as an additional refreshing and soothing enhancement finale to their Intensive service.

Step 11: Hand your client a mirror so they can see their fabulous new look!

Pro Tip: If you get tint on your hands while mixing, use a cotton ball dampened with Intensive Tint Remover to remove it. Wash your hands with soap and water immediately.

Intensive