

# Lash Lift



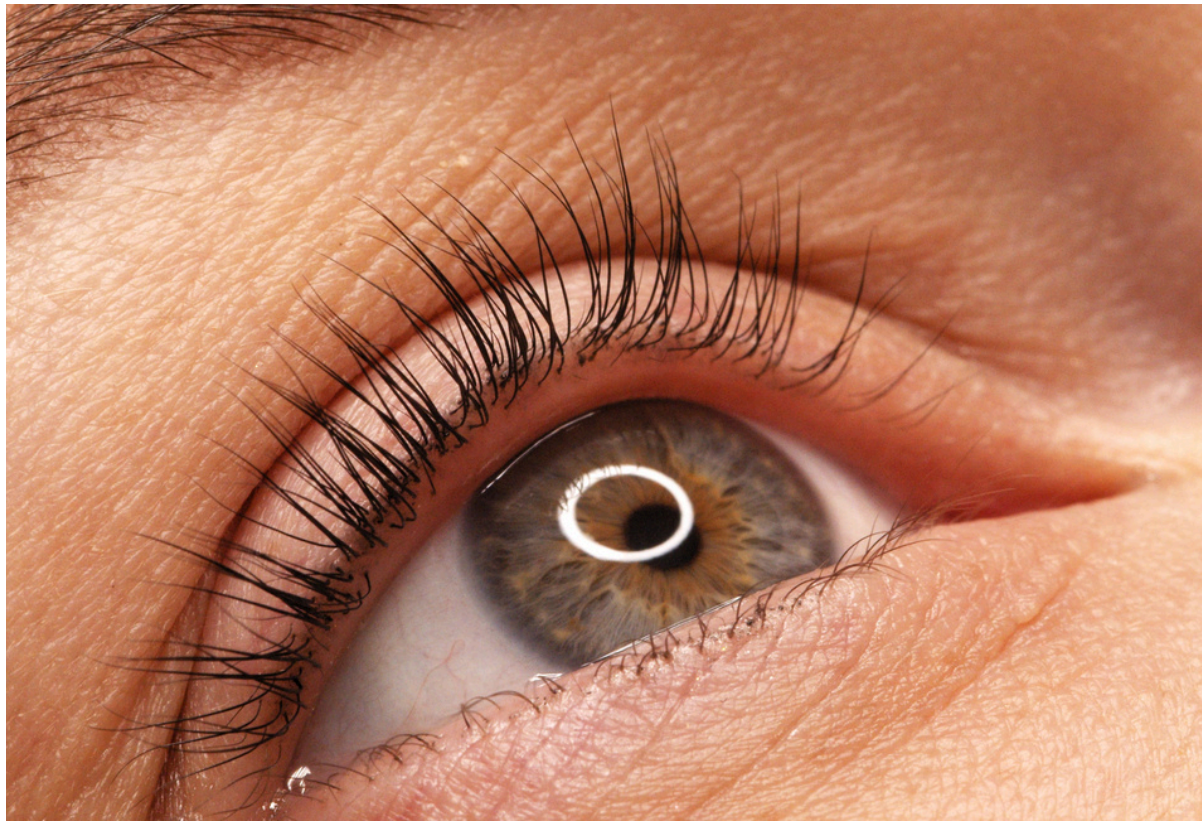
Treatment time:

**45 Mins**



Suggested price:

**\$90**



Lash Lift treatments give your clients the appearance of longer lashes, while creating an eye-opening effect. This treatment maintains the perfect curl or lift for approximately 6 to 8 weeks.

\*Always check with your local state regulations to ensure that you are practicing within the scope of your license.



## SAMPLE MENU DESCRIPTION:

Transform your natural lashes with a lengthening and lifting treatment  
- no extensions needed!





# Products Needed

*Eyelash Perm & Lift Cream No 1 - Waving Lotion LT404*

- *Eyelash Perm & Lift Cream No 2 - Neutralizer LT405*
- *Eyelash Perm & Lift Cream No 3 - Conditioning Lash Food Lotion LT313*
- *Intensive Lash Moist, The Moisturizing After Care Pen LT304*
- *Intensive Make-Up Remover Foam LT206*
- *Intensive Relaxing Eye Cream LT208*
- *Glass Dappen Dish SN549*
- *Biosmetics Lash Lift Pads (Size S, M, L) LT408, LT409, LT410*
- *Mascara Wands VL131*
- *Intensive Aloe Eye Gel Patches LT305*
- *Lash & Brow Bond LT411*
- *Biosmetics Y -Brush LT416*
- *Lash Lift Tool LT311*
- *Intensive Microbrushes LT303*
- *3M Surgical Tape N3497*
- *Cotton pads, swabs and damp cotton buds C502T, CX026T*
- *Gloves BD120*
- *Head band (for client) C263T*

## **Recommended (optional), for add-on tinting treatment:**

- *Intensive Tint (deep black or blue black) LT101, LT102*
- *Intensive Cream Developer Oxidant LT211*
- *Tinting Brush - round tip LT204*
- *Intensive Tint Remover LT207*

**Note: Treatment time varies by client. Larger silicone pads create a softer, more natural curl; smaller pads give a more dramatic lift. Gently knead Intensive sachets before opening.**

---

## **Preparation**

- Massage sachets gently before opening.
- Complete client intake and confirm removal of contact lenses.
- Ensure the client is lying comfortably, offer a blanket, and protect their hair with a headband.
- Drape a towel over the upper body to protect clothing. Sanitize hands.
- Remove makeup from eyelids and lashes with Intensive Eye Makeup Remover Foam and a clean cotton pad.
- Take a "before" photo if desired.
- Select appropriate size Silicone Pads (S, M, or L) and trim to fit if necessary.
- Ask client to look upward; apply Aloe Eye Gel Patches under the eyes to secure bottom lashes.



# Service Protocol:



## Eye Patch Info

Biosmetics Aloe Eye Gel Patches protect the lower lid during treatment. Aloe and Vitamin C provide moisture and refresh the skin. The patches are lint-free and easy to use.



## Lash Preparation

- Have client close their eyes.
- Comb through lashes with a disposable mascara wand.
- Inform the client to keep their eyes closed for the remainder of the service



## Bonding Lashes

- Apply a few drops of Lash Bond to the back of the Silicone Pads and adhere them close to the lash line. Hold for 20 seconds.
- Working in small sections, apply Lash Bond directly on the silicone pad.
- Use the Y-Brush to lift lashes from the root onto the pad.
- Use the Eyelash Separating Tool to separate and align lashes.
- Ensure lashes are straight, not crossed, and fully bonded to the pad.



# Service Protocol:



## Perm & Lift Cream No. 1 – Waving Lotion

- Knead sachet No. 1 and dispense into the mixing dish.
- Apply waving lotion from lash root to mid-length using a Microbrush. Do not apply to the tips.

### Processing Times

- Very fine lashes: 4–5 min
- Fine or tinted lashes: 5–6 min
- Healthy natural lashes: 6–8 min
- Coarse lashes: 9–10 min
- Remove lotion with a Lash Wiper using a twist-pull motion. Avoid water and linty tools.
- Use 3M tape or Lash Bond if tiny lashes peel off.



## Perm & Lift Cream No. 2 – Neutralizer:

- Dispense sachet No. 2 into a clean mixing dish.
- Apply from root to mid-length with a new Microbrush.

### Processing Times

- Very fine, fine, and tinted lashes: 5 min
- Healthy natural and coarse lashes: 6 min
- Remove with a dry lint free applicator using a gentle twist-pull motion.



# Service Protocol:

## Optional Tinting (Color Boost):

- Prepare chosen tint and apply using the Tinting Brush.
  - Process for 3–5 minutes.
  - Remove tint using a dry lint free applicator.
- 

## Perm & Lift Cream No. 3 – Conditioning Lash Food Lotion:

- Open sachet No. 3 and apply Lash Food Lotion to release lashes from Silicone Pad using a new Microbrush.
  - Apply Relaxing Eye Cream or Cream No. 3 under the silicone pad and gently release pad from eyelid.
  - Remove excess cream with a clean cotton bud.
  - Remove Aloe Eye Gel Patches.
  - Comb lashes upward with a clean Mascara Wand.
  - Review aftercare instructions and provide the client with a printed copy and Moisturizing Pen for at-home use.
- 

## Perm & Lift Cream No. 3 – Conditioning Lash Food Lotion:

- Open sachet No. 3 and apply Lash Food Lotion to release lashes from Silicone Pad using a new Microbrush.
- Apply Relaxing Eye Cream or Cream No. 3 under the silicone pad and gently release pad from eyelid.
- Remove excess cream with a clean cotton bud.
- Remove Aloe Eye Gel Patches.
- Comb lashes upward with a clean Mascara Wand.
- Review aftercare instructions and provide the client with a printed copy and Moisturizing Pen for at-home use.



# Aftercare Instructions:

To ensure the best results and long-lasting effects (up to 4–6 weeks), clients should follow these guidelines for 24–48 hours post-treatment:

- Use the Intensive Moisturising Pen daily; always comb lashes upward.
- Keep lashes dry for at least 24–48 hours.
- Do not apply makeup or receive other eye treatments during this period.
- Avoid rubbing or touching the eyes.
- Do not wear contact lenses for 24–48 hours.
- Avoid swimming, sauna, or excessive sweating.
- Seek medical attention if any irritation, stinging, or swelling occurs.