

Model #D-201M
Ion Facial Steamer & Magnifying Lamp

Ion Facial Steamer

The basic concept of this facial steamer, which has the newest modern design and fashion, is that it uses electro thermal pipe to heat water for generating steam. Ozone lamp helps disinfect and decontaminate the steam. The sterile steam is passed to the skin where the treatment is needed.

The special feature of this instrument is that it has an AUTO TURN-OFF SYSTEM. When the probe is out of water, the AUTO TURN-OFF SYSTEM will cut off power and sound an alarm to remind the operator water is insufficient. This will save energy and prolong the machine's service life. With its smooth and beautiful shape, high-tech structure, this machine has been very popular in many markets.

CAUTION:
When the water level drops below the lowest extremity of the probe, the power supply will be automatically cut off. Conversely, when the water level is back above the lowest extremity of the probe, the power supply will automatically return. While the machine is in use, the probe must remain immersed in water.
Always turn off the machine when not in use, even if there is no water in the water jar. Otherwise, dust or dirt particles may trick the sensors and the thermal fuse may burn out and may need replacing.

- Notice:**
1. When the lowest extremity of probe is really dirty, its sensitivity will be affected / lower.
 2. When voltage is below 100 volts, the machine may not work.
 3. When using pure (distilled) water, initially the machine may not work. The probe may not recognize that there is water, because of lack of impurities in pure (distilled) water. In this case, try regular tap water for one time. The machine will work. After, switch back to pure (distilled) water. Pure (distilled) water will protect the elements and keep your machine running for a longer time.
 4. DO NOT add any essential oil in water. If somebody adds any essential oil in water by mistake, clean the water jar and the elements thoroughly. After this, turn on the machine for about 10 minutes to see if spits steam or water. Make sure to aim the steam away from your customers or other people when testing this. Please remove any water left overnight from the water jar. Otherwise, the water may thicken and cause spitting.
 5. Please confirm that the gasket is positioned correctly. The purpose of the gasket is to create a tight seal between the water jar and the machine. If the gasket is not positioned correctly, there may be a gap in between the water jar and machine. This may cause hot water or steam to spit from the gap.
 6. Please make sure water is never over the maximum water level line, which is marked on the water jar. If this happens, boiling water may overflow and get into the Steamer Arm or the hose within. Water may accumulate inside and may cause spitting.

- Features, Electrical Specifications**
1. It will take 5 to 8 minutes to generate steam.
 2. Steamer Arm can be rotated left and right. DO NOT use force if it is resisting.
 3. Heater Coil wattage is 650 watts.
 4. Voltage is 100v to 120v.

Model #D-201M
Ion Facial Steamer & Magnifying Lamp

Assembly

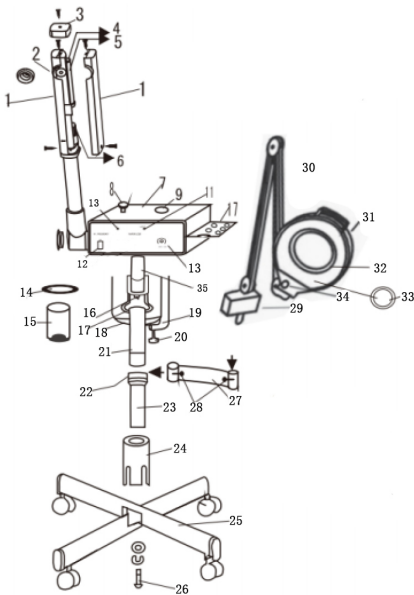
1. Insert 2 pieces of the Wheel Stand (#25) under the Stand Claw (#24).
2. Insert Main Pole (#23) into the top of Stand Claw (#24).
3. Use Bolt (#26) to connect the Stand Claw (#24) and Main Pole (#23) together.
4. Loosen the Height Adjustable Lock (#22) on the top of Main Pole (#23).
5. Insert Metal Middle Pole (#21) into the Main Pole (#23).
(**CAUTION:** there is a strong spring inside of the Main Pole (#23). When you insert the Metal Middle Pole (#21) into it, please be very careful. The Metal Middle Pole (#21) may pop up and you may get hurt! Please use one hand to hold Metal Middle Pole (#21) and lock the Height Adjustable Lock (#22) tightly!)
6. Insert the Magnifying Lamp Connector (#27) into Metal Middle Pole (#21). Use the optional Magnifying Lamp Connector Screws (#28) for extra tightness, as needed, so that the Magnifying Lamp Connector (#27) does not swing.
7. Insert the Steamer Pole (#35) into the Metal Middle Pole (#21).
8. Place the Gasket (#20) on the top of the Water Jar (#21) establishing a snug fit.
9. Insert the Water Jar (#21) in place.
10. Screw tight the Water Jar Holding Plate (#18) under the Water Jar (#15).
11. Lock the Water Jar (#21) in place using Plate Locking Knob (#26).
12. Make sure the top of the Gasket (#20) creates a tight seal between the Water Jar (#21) and the machine.
13. Position Magnifying Lamp Box (#29) on the far end of Magnifying Lamp Connector (#27).

Parts:

- | | |
|---------------------------------|--------------------------------------|
| 1. Steamer Flat Tube Cover | 17. Heating Coil |
| 2. Nozzle Cap | 18. Water Jar Holding Plate |
| 3. Flat Tube Head Cap | 19. Water Jar Supporter |
| 4. Uv Lamp Socket | 20. Plate Locking Knob |
| 5. Uv Lamp | 21. Metal Middle Pole |
| 6. Uv Lamp Starter | 22. Height Adjustable Lock |
| 7. Protective Cover | 23. Main Pole |
| 8. Arm Lock | 24. Stand Claw |
| 9. Water Pouring Hole | 25. Wheel Stand |
| 10. Faceplate Sticker | 26. Bolt |
| 11. Indication Lamp For Steamer | 27. Magnifying Lamp Connector |
| 12. Power Switch For Ozone | 28. Magnifying Lamp Connector Screws |
| 13. Timer Control Knob | 29. Magnifying Lamp Box |
| 14. Gasket For Jar | 30. Magnifying Lamp Arm |
| 15. Water Jar | 31. Magnifying Lamp Lens Frame |
| 16. Water Level Sensor | 32. Magnifying Lamp Cover |
| | 33. Magnifying Lamp Bulb |
| | 34. Magnifying Lamp Starter |
| | 35. Steamer Pole |

Operation (Steamer)

1. Fill up the water from Water Pouring Hole (#9) or fill up the water into Water Jar (#15) then put it in place. **CAUTION:** Water should not be over the maximum line as marked on the Water Jar (#15).
2. Connect the Power Cord.
3. Rotate the Timer Control Knob (#13) to the desired time, which will start the Steamer Function.
4. It takes around 5 to 8 minutes to heat up.
5. You will see there are some bubbles on the Heating Coil (#17).
6. After that happens, steam will come out from Spray Nozzle soon. (**CAUTION:** Do not get too close to the Spray Nozzle. The steam may burn your skin!)
7. You may switch ON the Ozone Switch (#12).
8. You may turn around 180° the Steamer Arm to adjust the angle you want.
9. You may also adjust the height by Height Adjustable Lock (#22).

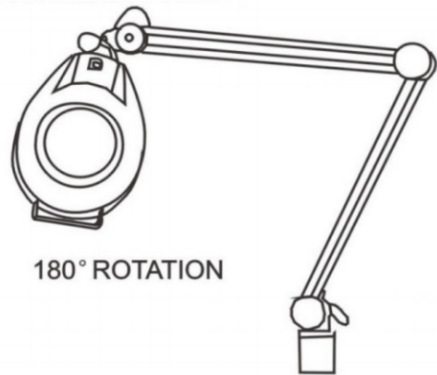


Model #D-201M Ion Facial Steamer & Magnifying Lamp

10. When the water gets below to the lower water line on the Water Jar (#15), the Water Level Sensor (#16) will stop the steamer immediately. Please rotate the Timer Control Knob (#13) to Zero to make sure that the Steamer Function is completely turned off.
11. You may add water from the Water Pouring Hole (#15) (CAUTION: the temperature inside the Water Jar (#15) is still hot. Don't add any cold water in! The Water Jar (#15) may crack or shatter. Please add room temperature water only!)
12. Please empty and clean the Water Jar (#15) every day if used!
13. **Maintenance:** Please clean the Water Jar (#15) and Heating Coil (#17) at least one time weekly. To clean other components of the steamer, place a teaspoon of White Vinegar (about 10 drops) in the Water Jar (#15) and add water below the Maximum Line. Run one cycle, at least for 15 minutes. Upon completion, rinse the Water Jar (#15) thoroughly and let dry overnight.

Magnifying Lamp

UP/DOWN ADJUSTER TUBE



MILD LIGHT WILL NOT HARM THE EYES.
THE GLASS MAGNIFIES FIVE AND EIGHT TIMES.
DISTANCE ADJUSTER TUBE FOR EASE OF OPERATION.

Operation (Magnifying Lamp)

1. Connect the power cord.
2. Turn ON the Power Switch; it will take 5-7 seconds to start up.
3. You may adjust the Magnifying Lamp Arm (#30) to any angle.
4. You may adjust the Magnifying Lamp Lens Frame (#31) as needed.
5. You may use the optional Magnifying Lamp Connector Screws (Part #28) for extra tightness, as needed.

Please be careful when moving to prevent the magnifying lamp from falling down.

