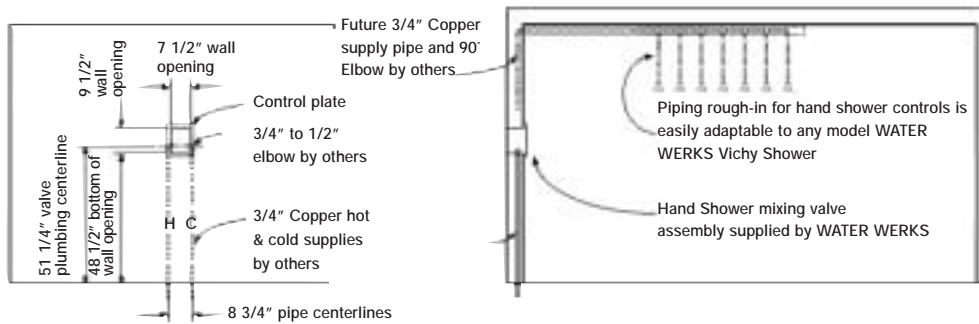


Versatility is the name of the game with the WATER WERKS Splash Hand Held Shower. This new shower, combined with a wet treatment table, is the most economic and effective entry into the high growth category of hydrotherapy.

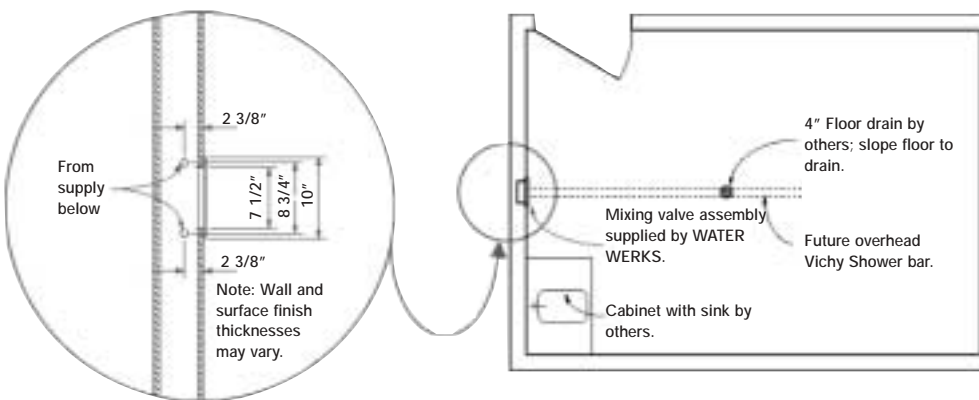
The Splash is designed to be easily upgraded to a WATER WERKS Vichy Shower system by following our simple instructions and can also be used with other Vichy Shower Systems to develop dual temperature treatments using alternating hot and cold water.

A pressure balanced mixing valve, visible temperature verification, extra length hose and push button pause control make the Splash a great addition or start to your hydrotherapy treatments.



Mixing Valve Piping Rough-In Elevation

Typical Cross Section of Shower System



Plan Detail of Mixing Valve Piping Rough-In

Typical Hand Shower Room Plan

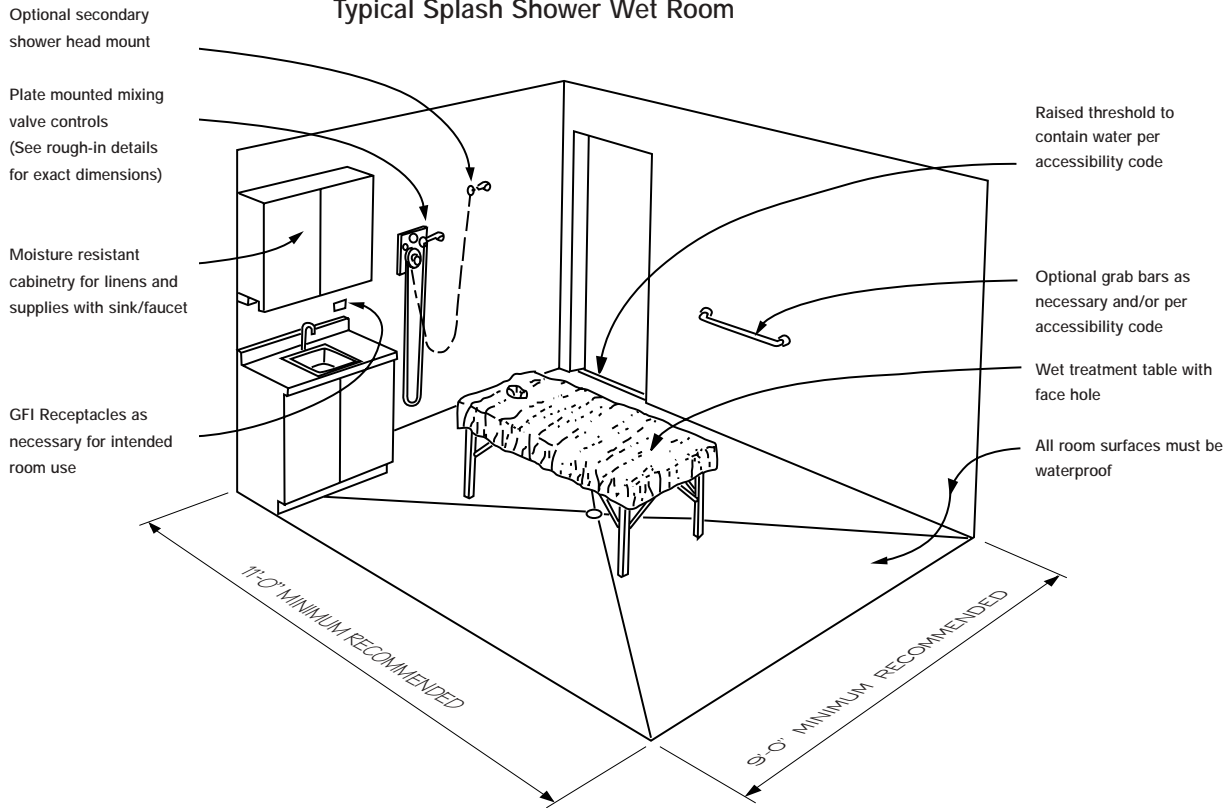
NOTES

1. 3/4" supplies are required for future upgrade to WATER WERKS Vichy Shower.
2. Mixing valve assembly is designed to receive water supplies from sides; pipe supply spacing shown originating from below at 8 3/4" is for convenience of future conversion to WATER WERKS Vichy Shower (overhead) which requires pipe supply from bottom.

3. If current circumstances require piping supply from above, then loop around to enter wall opening from bottom.
3. Vent all plumbing as required by local code.
4. Grab bars are available from WATER WERKS.
5. For easiest installation, reserve rough-in plumbing until mixing valve assembly is on site.

6. WATER WERKS reserves the right to alter details or dimensions without notice. Contact WATER WERKS for most recent version of drawings.

Typical Splash Shower Wet Room



THE WATER WERKS 5 YEAR WARRANTY

WATER WERKS products are warranted to be free of defects in material and workmanship to the original domestic purchaser for five (5) years from the date of purchase as shown on the original invoice. If a defect is found, please contact WATER WERKS at the phone number below for instructions. Defective parts or components that are covered under this warranty must be returned to WATER WERKS insured and shipped pre-paid to the address shown below. WATER WERKS will, at its option, repair or replace the defective part or component. This warranty does not cover labor charges, damage caused by improper installation or modification. This warranty applies only to items that WATER WERKS manufactures.

Be sure to complete and return all warranty cards that come with your WATER WERKS equipment.

To obtain warranty service, contact WATER WERKS SYSTEMS either through your dealer, or by calling WATER WERKS Customer Service Department at 952-884-9225. You may also write to us at WATER WERKS, Customer Service Department, 10740 Lyndale Avenue South, Suite 12W, Minneapolis, MN 55420. Please provide all pertinent information regarding your claim such as model type, purchase date, serial number, and type of problem.

There are no other express warranties on this product and ALL WARRANTIES OF MERCHANTABILITY AND WARRANTIES AS TO FITNESS FOR A PARTICULAR PURPOSE AND ANY OTHER IMPLIED WARRANTIES ARE EXPRESSLY DENIED. This warranty gives you specific legal rights, and you may also have other rights which vary from state to state.

The following specific items or components of WATER WERKS equipment come with their own manufacturers' warranties that vary depending on the item:

- The Setma Hydrotherapy Tub and Thalasso Tubs
- The mixing valve in the WATER WERKS Torrent, Monsoon, Cascade, Typhoon, Tsunami, Splash, Mirage and Scots Hose Showers
- The tub components in the WATER WERKS Aquarian and Zephyr Hydrotherapy Tubs
- WATER WERKS Aqua Top

Please refer to warranty cards enclosed with these products for details on the specific warranty terms and conditions for these items.