



PORTABLE
NAIL FILING SYSTEM

MODEL 8 IP-D8WH (WHITE)



www.ikonna.com

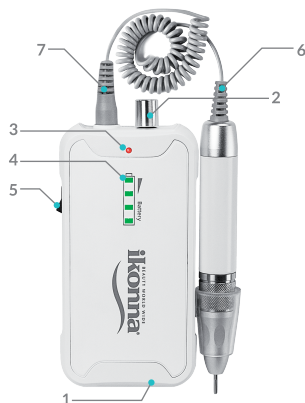
USER MANUAL

PACKING LIST

1. Battery Control Box (x1)
2. Handpiece (x1)
3. DC Adapter (DC24V1A) (x1)
4. Handpiece Holder (x1)
5. User Manual (x1)
6. Warranty Card (x1)
7. Drill Bit (x1)

FUNCTIONAL DESCRIPTIONS

1. DC Adaptor Socket
2. Speed Controller
3. Charging Indication
4. Battery Indicator
5. Forwards and Backwards
6. Handpiece
7. Three-Cores Plugs



INTRODUCTION

Thank you for choosing our new portable nail filing system! This control box operates the power supply and adjusts the drilling speed. The drill's light weight and compact design makes it a must-have nail filing system for professional use. Please take a moment to go through these important details about your drill.

OPERATION INSTRUCTIONS

1. Rotate the spindle to the left, choose one grinding drill bit and push the bit into the hole at the tip. Rotate the spindle to the right to fasten the bit.
2. Connect the nail drill to the handle. Then plug the charger into the base of the nail drill.
3. The indicator light will light up when the machine has access to a power supply. It will be fully charged after 2 hours.
4. Rotate the circular speed controller clockwise to turn on. It will turn on when you hear a "click" sound. Rotate the circular speed controller on the top of the nail drill to accelerate or decelerate. Turn clockwise to accelerate and counterclockwise to decelerate.
5. To change the rotation direction of the grinding drill bit, you will need to press the button on the left.
6. After the polishing is finished, please rotate the spindle and take out the drill bit. Kindly Note: It takes two hours to fully charge for the first time.

FEATURES

1. High-powered, portable and space-saving.
2. Light-weight.
3. Ideal for professional use.
4. Easy to operate and specialized for carving, engraving, grinding, sharpening, sanding, polishing, drilling etc.

SPECIFICATIONS

- Input Voltage Range: AC100-240V/50-60Hz
- Output Voltage: DC24V 1A
- Charging Time: About 2 hours
- Speed: MAX 35000 RPM
- Battery capacity: 1500mA (11.1V)

PRECAUTIONS FOR BATTERY USE

1. If the battery can be detachable, please install it gently. Otherwise, the battery will be weeping, overheat, exploring and causing fire. If the battery cannot be detachable, please do not remove it, or it will cause damages and safety problems.
2. Please do not weld the battery terminal. Do not let the battery contact other metals like necklace. Do not store the battery into the electrically conductive case. Do not allow the battery terminal to contact any conductive surfaces or equipment damage may occur, as well as the human body injury and battery explosion.
3. Please do not squeeze the battery and do not use the needle to pierce the battery. Otherwise, the battery will be weeping, overheat, exploring and causing fire.
4. When battery liquid contacts your skin or clothes, it may cause skin burning. Please wash the wound with a lot of water and soap and ask for medical help ASAP.
5. Please do not use the battery if it is overheat, color changing, deformed, bulged, and leaking during the charging, using and storage.
6. It is at a risk of blindness when the battery liquid contacts your eyes. Please do not rub your eyes and wash the wound with a lot of water and ask for medical help ASAP.
7. Please do not remove or convert the battery or it will be weeping, overheat, exploring and causing fire.
8. Please do not use or store the battery at a place that is close to fire or heater or it will be weeping, overheat, exploring and causing fire.
9. When there's battery liquid leaking or odd smells, please take the battery far away from the fire or heater or it will be weeping, overheat, exploring and causing fire.
10. Please keep the battery dry or it will be weeping, overheat, exploring and causing fire.
11. Please use and store the battery at a place that is shield from direct sunlight, or it will cause leaking and overheat, which results in poor performance and shorter life time. Please keep the battery at a cool and shady place.
12. Please do not use the battery at a high pressure environment, or do not touch the battery with the electrical supply. Otherwise, it will cause short circuit and even explorations.
13. The battery can be rechargeable for more than several hundred times. But it has life span. When its life has reduced to 50% life span, we suggest you change a new battery.
14. Do not throw the battery into the fire, or it will cause fire and explorations. Do not cast the battery into the domestic waste. Please cast the battery to the place where wasted battery can be handled by normalization.

ATTENTION: THE CONSECUTIVE CHARGING TIME CANNOT BE OVER 12 HOURS

1. Do not charge the battery at the place that is too hot or too cold, or it will cause poor performance and shorter life span.
2. Please turn off the machine when you don't use it.

SAFETY RULES

1. Never unplug the power supply when the motor is still running.
2. Always unplug the appliance from the electrical outlet when not in use.
3. Do not attempt to repair the appliance. For the repair service, please contact the agents or authorized repair center directly for fast, high quality service.

PRECAUTION



WARNING

This symbol indicates the possibility of being dead or wounded seriously for men if our products are WARNING operated by mistake regardless of this instruction.



CAUTION

This symbol indicates the possibility of being hurt for men or generating material damages if our products are operated by mistake regardless of this instruction.

- Please keep this instruction close to the people who are going to use.
- Please give this instruction to the person whoever use.



WARNING

- Please use the exclusive AC adapter.
- Please do not use any AC adapter except the exclusive AC adapter.
- Please charge the battery properly.
- Please use AC adapter with the rated indication controller.
- Please do not use DC power supply and engine generator with this controller.
- Please do not charge under 0 degree and over 40 degree temperature.
- Please charge in well ventilated condition.
- When charging controller, please do not cover them with cloth and others.
- When finished charging controller, please pull out DC connection plug of AC adapter from the controller.
- Please be careful for electric shock.
- Do not touch the plug with wet hand.
- Please consider the place where used.
- Please do not use the AC adapter and battery controller both humid, wet places and outdoors in the rain.
- Workstation has to be well lighted.
- Please do not charge in close to flammable liquid and gas.

- Please use the protection glasses.
- Please use the protection glasses while working. Please use the protection mask at the work in dusty environment.
- Please avoid sudden start.
- Do not push the switch when not using the appliances
- The switch must be turned off when connecting with AC adapter and appliances.
- Do not put the charging type controller into the fire.
- Do not use the charging type controller when the operation time is extremely short.
- Please turn off the switch when the battery is empty level.
- There is a possibility that affect pacemakers.



CAUTION

- Please work in clean and full space.
- Please keep away from the children.
- Please do not touch the charged type controller and AC adapter cord
- Please keep in neatly while not using.
- Please keep in a place not to be reached by children or can be locked.
- Please do not keep rechargeable controller in a place which is going to be 50°C (For Example: Don't keep it in a metal box or car in high temperature).
- Please keep in the dry room.
- For safety and efficient work, please adjust the speed which is most efficient for the appliance.
- Do not lock the handpiece while handpiece is moving.
- Never fail operating for any application not appointed.
- Please wear the proper dressing.
- Knitted gloves and clothes with open cuffs and long hairs are in danger of being caught in a machine.
- Please handle the controller and AC adapter with care.
- Please handle the AC adapter carefully. If broken, please contact the shop where you purchased and ask the repair.
- Please keep the handpiece dry. Please keep away from the oil and grease.
- Please do not use the application roughly.
- Never fail connecting or disconnecting the plug part. Do not carry the application by holding the cord.
- Please keep the distance between the cord and flammable or explosive materials.
- Please do not damage the AC cord and Motor-unit cord to prevent electric leakage and shock or fire.
- Do not attempt to adjust the appliance by yourselves.
- Please work in a clean and full space and use appliances in well-ordered areas.
- Please do not use the appliances when you are tired.
- Please make sure there is no damage or broken parts before you use.
- Please check the appliances whether there is any damage or not and please make sure the appliances work normally.
- Please do not use the both AC plug and broken AC adapter. If it has dropped and damaged, please do not use it.
- Please do not use if the battery controller is not able to turn on and turn off.
- If something unusual is detected for the battery controller, contact your supplier immediately.

- Please do not open, repair and modify the controller.
- When controller heated up or found any abnormal condition. Please contact local supplier for inspection and repair.
- Please never repair by yourself.
- Please contact local supplier to change new battery.



CAUTION of Lithium-ion polymer battery

Lithium-ion polymer battery is expendable item.

- There is a protection feature to stop the output which gives Lithium-ion polymer battery a longer life with stopped output. Don't disassemble the machine when it happens.
- In case of the battery level is very low, the handpiece is stopped, please recharge the battery.
- When the handpiece is stopped, please turn off the switch and drop the speed level to Min. Then, turn on the switch again.



WARNING

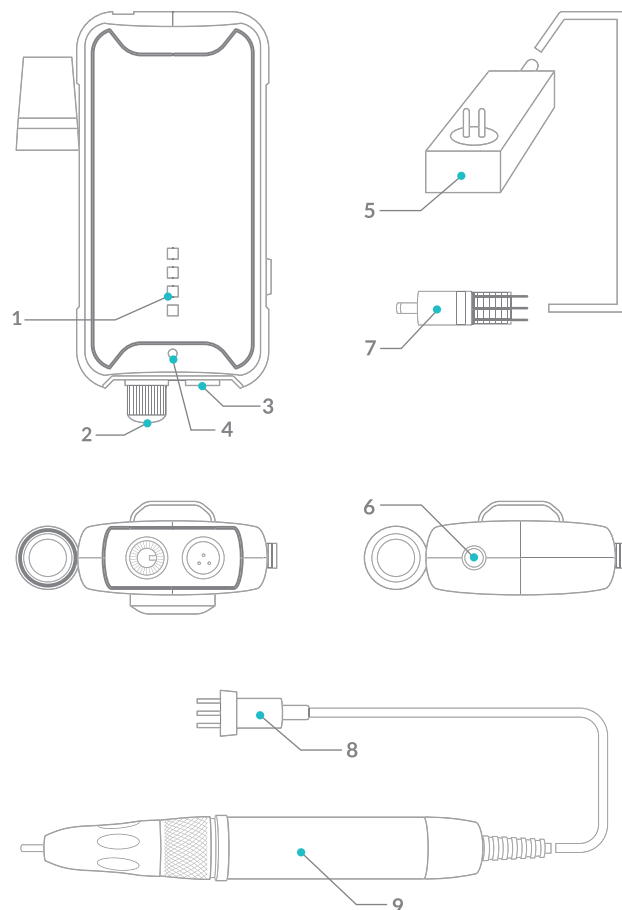
- Please follow the below instructions to avoid any liquid leakage, high temperature, smoke and ignition of the Lithium-ion polymer battery.
- Do not damage the battery controller such as hitting, stepping on, throwing it.
- Please avoid impact on the battery.
- Please do not use any AC adapter except with the original battery controller that was included in the package.
- Please use the battery controller by proper instruction.
- Please stop charging if the battery level is low.
- Please do not put the battery controller in the microwave, high pressure container.
- Please do not give high pressure and heat to the battery controller.
- Please move from any combustible items in case the battery controller leaked or had bad smell.
- Please do not use at the place where static electricity exist.
- Please stop using the battery controller when the battery controller changed color, heated up or changed shape.
- Please do not use the battery controller in case you found any unusual things.



CAUTION

- Please wash your eyes with clean water well and go to hospital immediately in case the battery liquid got into your eyes. Please do not wipe the eyes.
- Please wash with clean water well in case the battery liquid had touched your skin and clothes.
- Please return the appliances before use if the appliances have any smell, high temperature when you opened new appliances.

PART NAMES



- | | |
|--------------------------------|----------------------|
| 1. Battery indicator | 6. DC socket |
| 2. Switch and speed controller | 7. DC connector |
| 3. Aerial socket | 8. Aerial connector |
| 4. Forward and backward | 9. Handpiece |
| 5. Adapter | 10. Charge indicator |