



SILHOUET-TONE®

SILVER Peel

INSTRUCTIONS
MANUAL |



www.silhouettone.com

Content

Silver Peel

01. Important Safeguards	3
02. Silver Peel Unit	4
03. Connecting the « Crystal Free » System	5
04. Contraindications of « Crystal Free » Exfoliation	7
05. Metallic Tips Cleaning and Sterilisation	8
06. Protocol of « Crystal Free » Procedure	9
6.1 Procedure Parameters	9
6.2 Procedure Schedule	9
6.3 Exfoliation Protocol	10
6.4 Procedure Chart	10
6.5 Potential Side Effects	11
07. Client's Instructions Sheet	13
08. Important	14
09. Specifications	15



Thank you for purchasing the Silver Peel exfoliation system. We realize that there are many Crystal free systems available and we are confident that choosing a Silhouet-Tone product, crafted and manufactured in North America, will reward you with many years of trouble free operation and the excellent results the industry has come to expect from Silhouet-Tone products.

All rights reserved. No part of this work covered by the copyright hereon may be reproduced or used in any form or by any means—graphic, electronic, or mechanical, including photocopying, recording, taping, or information storage and retrieval systems—without permission of the company.

© 2014

01. Important Safeguards

Read the following instructions before using this apparatus

1. This apparatus is to be used only for purposes that are approved and described in the following manual. Use only with attachments recommended by the manufacturer.
2. Never perform a procedure on inappropriate or sensitive areas.
3. Prior to each use of the system, inspect all cables and attachments for any damage, excessive wear, or crimping that could affect system performance or safe operation. Never use the system if any damage is visible.
4. Do not use this apparatus if the power cord has been damaged, if it is not working / operating correctly or damaged. Return -apparatus to service center for verification or repair.
5. Keep power cord away from heat source.
6. **WARNING:** To avoid the risk of electric shock, this equipment must only be connected to a supply main with protective earth.
7. **WARNING:** Caution should be exercised to avoid spilling any liquids on the unit.
8. Never pull the power cord to disconnect the equipment from the mains. Always do so by firmly grasping and pulling the connector. Always allow enough space between the equipment and the mains for easy disconnect or plug in access.
9. This apparatus should only be operated by an appropriately trained and certified personnel possessing knowledge of the skin physiology and only in a professional setting. If you have any questions regarding the operation of this unit, contact Silhouet-Tone or your local distributor.
10. Grounding instructions:

This unit must be properly grounded. In the event of a short-circuit, the power cord's ground prong will reduce the risk of electric -shock by providing an escape route for the current.

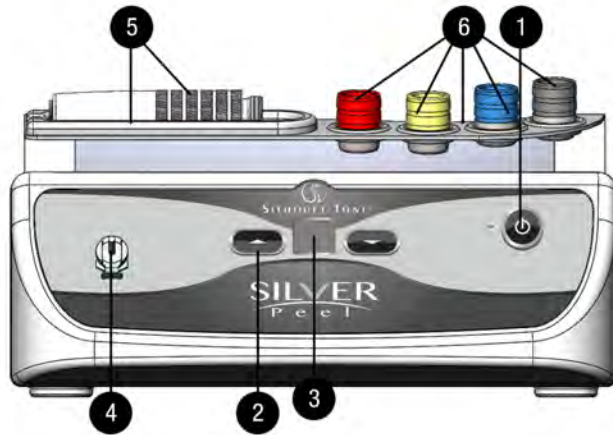
The power cord is equipped with a grounding wire and three-pronged plug. The power cord must be plugged into a properly installed three-pronged grounded outlet.

DANGER: THE IMPROPER USE OF A GROUNDING PLUG MAY CAUSE ELECTRIC SHOCK.
11. The power cord should be routed so that they are less likely to be walked on or pinched by items placed on or against them. Pay particular attention to cords at plugs, convenience receptacles, and the point where they exit the unit.
12. Do not use any adaptors with this unit. Do not modify the plug if it does not fit the outlet. Have an electrician install a suitable -outlet.
13. Do not overload wall outlets and extension cord; this can lead to an increase risk of fire or electric shock.
14. All maintenance work must be done by SILHOUET-TONE or an authorized service representative. Do not attempt to service -this unit yourself. Opening the unit may expose you to high voltage or other hazards, and will void your warranty. Always use Silhouet-Tone certified replacement parts and accessories.
15. To insure continuous protection against fire, always replace the fuse with one of identical type and amperage, as approved by -the manufacturer.
16. Never immerse the crystal free hand piece in any type of solution.
17. Slots and openings in the unit casing are for ventilation. They are there to ensure reliable operation and prevent overheating. -These openings must not be blocked or covered. This unit should not be placed in a built-in installation unless proper ventilation -is provided for.

Save these instructions!

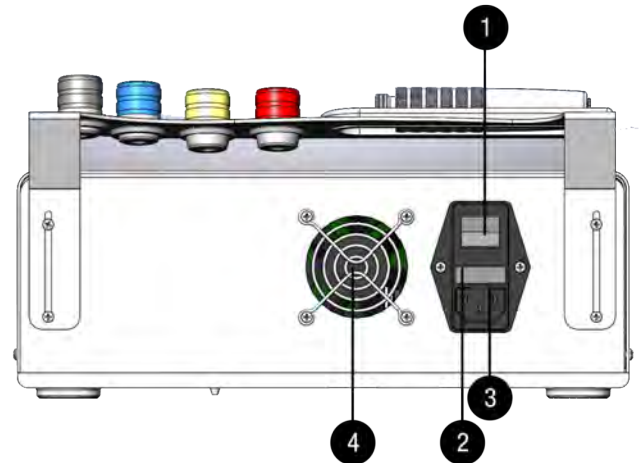
02. Silver Peel Unit

FRONT PANEL



1. Procedure START / STOP key.
2. Intensity control (UP / DOWN).
3. Intensity display screen (00-10).
4. Hand piece connection outlet.
5. Hand piece cradle.
6. "Crystal Free" tip cradles.

BACK PANEL



1. ON / OFF main switch.
2. Fuse box.
3. Power cord outlet
4. Ventilation opening.

Starting the procedure :

- Connect the "Crystal Free" System to Silver Peel unit (*as per instructions below*).
- Turn on the main power switch on the back of the unit. (*The LED indicator on front panel will light up*).
- Wait at least 10 seconds for unit to warm up.
- Press the "START / STOP" key (*on the front panel*).
- Adjust the abrasion / vacuum power with the intensity key (*located on the front panel*).
- The intensity will appear on your screen.



Note: Ensure the central unit is powered off before connecting the crystal free hand piece.

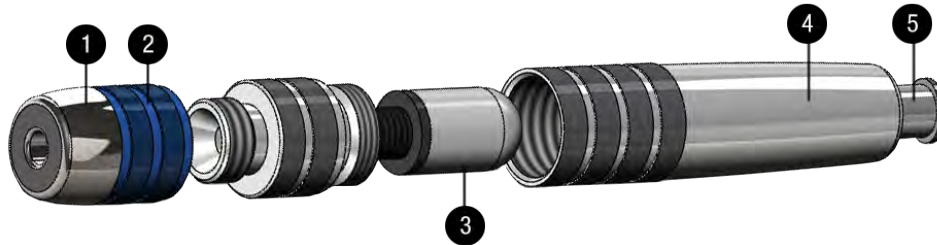


WARNING:

- ✓ Always begin procedure at the lowest intensity setting.
- ✓ Always insure that the filter is inserted into the hand piece before any procedure.

03. Connecting the “Crystal Free” System

Crystal free hand piece



1. Crystal free stainless steel tip.
2. Color coded band, identifying abrasiveness index.
3. Crystal free internal filter.
4. Crystal free handle.
5. Hand piece tube's outlet.

Color coded tips indicating degree of abrasiveness



Connecting the “Crystal Free” hand piece

- Connect one end of the vacuum tube into the vacuum outlet of your Silver Peel unit (*outlet #4 on front panel*) and the other end into the crystal free hand piece tube's outlet (*outlet #5 on above picture*).
- Choose the appropriate tip (according to desired degree of abrasion) and screw into place.
- Turn the unit on.



Note: Ensure the Silver Peel unit is powered off before connecting the crystal free hand piece.

Changing the Crystal Free internal filter (3)

The filter located inside the hand piece constantly collects skin residue and periodically (every 10-12 sessions) requires verification.

Procedure:

- When the filter needs to be replaced, “CF” inscription will appear on your Silver Peel’s display screen (# 3 on the front panel).
- Unscrew the crystal free handle than unscrew the filter.
- Discard the old filter.
- Screw the new filter in place, than the crystal free handle.
- Press concomitantly on both intensity control arrows (# 2 on the front panel) to reset the “CF” inscription.
- You can restart a new series of about 10-12 sessions.



IMPORTANT:

- ✓ **It is strongly recommended to replace the Crystal Free internal filter when Silver Peel unit indicates “CF” inscription. If filter is not replaced the vacuum intensity will drop progressively and can damage the unit.**
- ✓ **A drop in suction intensity requires IMMEDIATE replacement of the hand piece’s internal filter.**
- ✓ New filters can be ordered from Silhouet-Tone or your local distributor.
- ✓ We recommend having few filters on hands to replace as needed.

04. Contraindications of Crystal Free Exfoliation

Reminder

- Refer client to physician for any medical treatments or doubts regarding skin conditions.
- Perform Crystal Free procedure ONLY on healthy skin, free of infections or inflammations (wounds, infected scars, acne, etc.).
- Do not abrade beauty spots or moles, by-pass them without touching.

CONTRAINDICATIONS

- Allergy to stainless steel.
- Active local skin infection of all types (herpes simplex virus, flat warts, etc.).
- Active acne (with pustules).
- Users of Isotretinoin medication (Accutane, Roaccutane) must wait 6 months between medication interruption and beginning of exfoliation procedure.
- Vascular lesions (broken capillaries and rosacea).
- Uncontrolled diabetes.
- Eczema, dermatitis or any inflammatory skin condition.
- Skin Cancer.
- Blood thinner.
- Any medical condition that prohibits exfoliation.



WARNING:

- ✓ **BEFORE A PROCEDURE, INSPECT THE TIP** for any excessively jagged or abnormally formed surfaces on the tip (anything that could cause a cut in the skin). **DO NOT USE THE TIP** if you notice any damage.
- ✓ **Prior to procedure, always test the abrasion intensity on the inside of the client's forearm, where the skin is most sensitive.** Wait for 5 minutes and if no reaction is observed (redness, rash, bumps, swelling or any other reaction on tested area) you can begin procedure. If any reaction appears, do not proceed, if necessary refer the client to a doctor.
- ✓ **Extra care must be taken when working on mature or reactive skin.**
- ✓ **For first exfoliation, always use the fine metallic tip at the lowest suction.**

Potential Side Effects

Metallic tips are made of biocompatible material therefore skin allergic reactions are rare. The majority of reactions (unless allergy to stainless steel presented) are related to procedure's intensity and user's manipulations.

Potential side effects:

- Mild erythema and increased sensitivity may be observed, but usually resolves within 24 hours.
- Petechiae may appear during or after the procedure. This indicates that settings are too strong so you need to reduce the intensity. Mature skin is particularly susceptible to this type of reaction but will usually resolve within 48 hours.
- Telangiectasia or other vascular conditions may be aggravated by crystal free skin exfoliation.
- Mild flaking may occur over 2 days.
- Post microdermabrasion hyperpigmentation effect can be avoided by avoiding sun exposure and using sun block.

05. Metallic Tips Cleaning and Sterilization

The metallic tips offer various degree of abrasiveness, ranging from gentle to more aggressive. Finer tips are less abrasive, inducing a gentler exfoliation. It is very important to keep the tip surface clean.

Metallic tips are made of biocompatible stainless steel material and are reusable. They have to be treated as a critical device, coming into direct contact with the skin, so disinfection and sterilisation is required. We recommend having two or more Crystal-free tip kits on hand.

Cleaning procedure:

1. Immediately after each use, the metal tip should be **cleaned** for 15 minutes under running water, scrubbing with a fine brush to remove any residues. You can use a very gentle detergent (with pH between 5-7, not too basic, not too acidic) to avoid tip damage.
2. Autoclave sterilization is strongly recommended. The tips can withstand steam sterilization. Dry tips thoroughly following cleaning. Gravity Displacement Steam Sterilization: if the tips are sterilized in an unwrapped tray the “flash” cycle may be used. This is five minutes at a minimum temperature of 132°C (270°F) in a steam autoclave.



Important:

- ✓ **CLEAN THE TIPS FOLLOWING THE SAME PROCEDURE BEFORE FIRST USE!**
- ✓ **Always use a fine brush (preferably polymer made) to not damage the tips.**
- ✓ **Never hit, scratch or damage the tips in order to maintain their abrasive properties.**
- ✓ **We recommend that you not use the “Crystal Free System” if you are unable to properly clean and disinfect it as per recommendations.**
- ✓ **NEVER immerse the tips in any acidic or caustic solutions.**
- ✓ **Keep the tips DRY in order to preserve their properties.**
- ✓ **Accessories are not covered by the warranty and must be replaced once they have lost their abrasive properties (depending of the frequency of use).**

06. Protocol of Crystal Free Procedure

6.1 Procedure Parameters

Keeping clients informed and setting reasonable expectations are essential in preventing disappointment, especially with problematic skin (acne scarring, pigmentation problems, scars, etc.).

Clients should be informed that multiple sessions may be required before seeing improvements.

The variable parameters for a successful procedure are:

- Metallic Tip selection: fine, medium, coarse or very coarse.
- Vacuum intensity.
- Number of passes over the skin.

Metallic Tips

The tip will be chosen according to skin sensitivity and coarseness. A fine skin requires a fine tip and a coarse skin requires a coarse tip.

It is very important to maintain the abrasive surface clean.

Vacuum Intensity

The vacuum setting determines the amount of pressure between the skin and the abrasive surface of the metallic tip.

- Low vacuum intensity applies a low abrasive force; it is a conservative procedure.
- High vacuum intensity applies a high abrasive force; it is an aggressive procedure.

A high intensity vacuum setting can cause redness (petechiae). If the redness is too pronounced, reduce the vacuum setting intensity. Redness usually resolves in several hours.



Warning: Never use metallic tips around the sensitive eye area. It may cause redness and swelling.

Number of Passes

The metallic tip should pass over the skin surface at least two overlapping passes to attain uniform results. Usually, the first pass is vertical and the second pass is horizontal. The speed at which you move the wand is not critical.

6.2 Procedure Schedule

Use basic schedule for the following skin conditions.

- Sun damaged skin.
- Enlarged pores and seborrhea.

Basic procedure schedule should proceed in the following manner for 6 sessions:

- The first 3 sessions should be at 14 day intervals.
- The next 3 sessions should be at 21 day intervals.

Maintenance sessions should be once every 6 weeks. Clients need to comply with a maintenance program to achieve complete results.

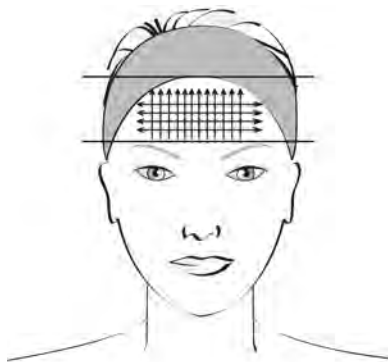
6.3 Exfoliation Protocol

- Cleanse the skin with a water base or gel cleanser and rinse thoroughly.
- Begin first session using the finest metallic blue tip.
- Start the first exfoliation procedure with the vacuum adjustment at a low setting. **Always perform an intensity test on the client's forearm before proceeding.**
- Keep the skin taut and hand piece at 90 degree angle.
- Always work on small areas one at a time, using a square pattern consisting of 2 horizontal passes followed by 2 vertical (the speed which you move the hand piece is not important). Fewer passes will result in a lighter procedure, more passes, a deeper procedure.
- It is recommended to use short, rapid strokes on sensitive areas
- Always use a magnifying lamp when working, to detect blood specks under the skin and prevent bruising or oozing.
- To reduce redness following an exfoliation procedure, use cold compresses or a soothing lotion.
- Apply a soothing moisturizing mask. Leave on for indicated time, than remove.
- Spray a soothing lotion on the face and apply a protective cream with sunscreen protection.
- **Do not** use a heat mask. We recommend the use of a cold modeling mask to reduce redness.

6.4 Procedure Chart

Divide the face into 3 Zones

- **Zone 1: Forehead** (below the hairline and above the eyebrows).
- **Zone 2: Mid face area** (nose, cheeks, jaw, upper and lower lip, chin).
- **Zone 3: Neck and "Décolleté".**



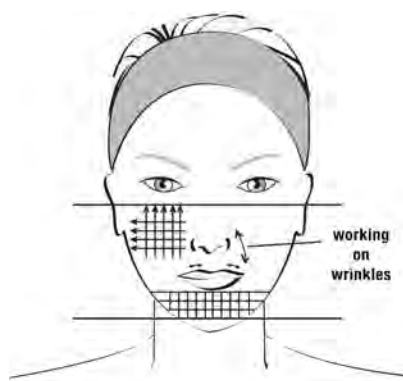
Zone 1: Forehead

- Be conservative during the first procedure using a magnifying lamp to reassess the abrasion. Use a **fine or medium tip and vacuum intensity setting at lowest value.**
- Start by proceeding from the brows to the hairline vertically Go over area repeatedly to desired depth of exfoliation. Repeat the pattern horizontally.

Zone 2: Mid-face area

Use a **fine or medium tip and vacuum intensity setting at lowest value.**

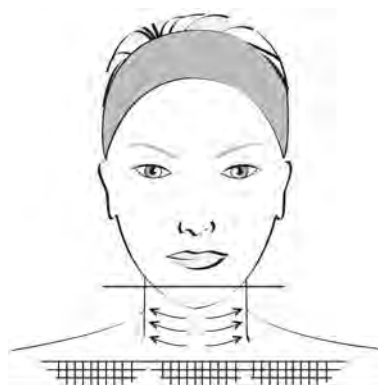
Take additional steps to keep the skin taut and avoid areas around the eye.



- Begin on the side of the face with vertical passes and cross with horizontal passes. Go over areas repeatedly to achieve desired depth of exfoliation.
- Move down on the nose following the contours, and around the creases.
- Work the upper lip area moving horizontally from the corner of the mouth over to encompass the smile lines. Make sure the skin is kept taut.
- Then pass to the chin and lower jaw areas with vertical and horizontal passes.
- **Never** pass on the lip's border and colored part.
- For horizontal wrinkles use horizontal passes, for vertical, use vertical passes.

Zone 3: Neck and “Décolleté”

Use the **fine or medium tip with reduced vacuum intensity** when working on the neck to avoid streaking. Always make sure the skin is held taut.



- Most clients require only horizontal passes on the neck area. Passes are performed from center outward.
- The Décolleté' will require vertical and horizontal passes using the fine or medium tip with lower vacuum setting similar to the neck.

After fully exfoliating the face & neck area, return to areas requiring more attention such as pigmentation, wrinkles or scars.

After procedure:

- Rinse treated area with soothing lotion and cool compresses.
- Apply appropriate calming or cooling mask, leave on for 5-10 min.
- Remove product with cool towel.
- Apply moisturizer and sun block.

6.5 Potential Side Effects

During the 3rd or the 4th day following a session, skin may desquamate if the intensity used during the procedure was too high.

Swelling and redness:

- May be due to aggressive or low pH acid products used after the procedure.
- Low pH products containing Retinol-A, AHAs, enzymes or essential oils may also cause skin irritation when used after skin abrasion. Skin will therefore be over treated and may react causing swelling, heating or redness.
- Following over aggressive procedures, some skins may also show slight swelling. This is not a problem. Apply calming and hydrating products.
- Petechial rash may appear during or after the procedure. This usually indicates that the vacuum setting is too strong. Working with low intensity on mature skin will avoid the problem.

Allergic skin reaction:

- An allergic reaction to a cosmetic product will cause an intense heat sensation, intense redness or itching during product application. You must remove the product immediately and use a cooling mask.

Pigmentation problems:

- Be extra careful with skin that is prone to hyper pigmentation. Avoid the sun and tanning beds and use sun block at all times.

Very Important:

During consultation, we recommend giving to each client a "Client Instructions Sheet". It is recommended to perform consultation and exfoliation sessions at 2 to 3 weeks intervals.

Most skin reactions can be avoided by providing the "Client Instructions Sheet", prior to first procedure.

07. Client Instructions Sheet

Prior to peel

- Discontinue use of: retinoids (Retin-A, Renova), AHAs (glycolic or other acids) or any other chemical peels at least one week prior to peel.
- Postpone procedure in case of active herpes (cold sore) outbreak or if you plan exposure to strong sunlight (such as sailing, skiing).

Immediately after peel

Moisturizer and sunscreen will be applied before leaving facility.

- Your skin will feel like a mild wind burn or sunburn. Maintain hydration, both topically and internally (drink plenty of water).
- Moisturize and reapply sunscreen several times throughout the day, as needed.
- **Avoid** direct sunlight as you now have fresh, newly exposed skin.
- **Avoid** whirlpool or swimming in a chlorinated pool the day of the exfoliation.
- **Avoid** waxing treated areas for two (2) weeks after procedure.

After peel

- Maintain hydration of skin and increase fluid intake.
- Continue to use sunscreen at least SPF 15 up to SPF 35. *(The use of a sunscreen above SPF35 is not recommended as it can induce irritation following skin exfoliation).* Be extra careful if skin is prone to hyperpigmentation and use sunscreens at all times.
- Exposure to UV rays **must be avoided** during 7 days after exfoliation.
- **Avoid** retinoids, glycolic acids or any chemical peels and for three (3) weeks following procedure.

08. Important

This system makes no medical claims. This procedure is not used in any mean of treating any medical pathological condition. The system is intended and should be used by licensed estheticians for esthetic purposes only.

Terms microdermabrasion, abrasion, exfoliation or peeling terms describe the same procedure: the esthetic exfoliation.

The masculine generic refers to both the masculine and feminine genders and is used for conciseness purposes only.

1. If you have questions regarding the operation of this system, call Silhouet-Tone or your local distributor.
2. Silhouet-Tone is not responsible for damage or accidents caused by the incorrect or unprofessional usage of the system.
3. Silver Peel unit includes:
 - 416003 | 3 Replacement Filters
 - 420881 | 1 Silver Peel Instructions Manual
 - "Crystal Free" System package containing following items:
 - 416690 | 1 "Crystal Free" Handpiece
 - 416683 | 1 Fine Abrasion Tip (Blue)
 - 416685 | 1 Medium Abrasion Tip (Grey)
 - 416687 | 1 Coarse Abrasion Tip (Yellow)
 - 416689 | 1 Very Coarse Abrasion Tip (Red)
 - 416004 | 1 Vacuum Tube
 - 420976 | 1 "Crystal Free" System Instructions Manual

09. Specifications

CSA Approved	
Universal Power Supply :	110 VAC - 240 VAC / 50 Hz - 60 Hz / 60 W
Fuse Type :	1A SB (110 VAC - 240 VAC)
Maximum Intermittent Vacuum Level:	- 0,5 bar
Sound Level at Maximum Free Flow:	65 dB - C Scale
Unit Dimensions:	Width : 12.0 in (300 mm) Height : 6.0 in (150 mm) Depth : 12.0 in (300 mm)
Unit Weight:	8 lbs (3.8 kg)
Construction:	Epoxy Coated Metal Housing Accessory Tray Injection Molded Face Low Noise from Sound Damping Components
Electronics:	Accurate Microprocessor Controlled Drive System
Safety Filter :	Located Inside Handpiece Assembly Long-Life Replaceable Cartridge and Filter
Ambient Operating Temperature :	+10 °C to + 35 °C
Ambient Operating Humidity:	30 % to 60 % RH

SILHOUET-TONE RESERVES THE RIGHT TO CHANGE THESE SPECIFICATIONS WITHOUT NOTICE.

All rights reserved. No part of this work covered by the copyright hereon may be reproduced or used in any form or by any means—graphic, electronic, or mechanical, including photocopying, recording, taping, or information storage and retrieval systems—without permission of the company.

© 2014



SILHOUET-TONE®

CORPORATION SILHOUET-TONE

2185, Michelin
Laval (Québec) H7L 5B8 Canada
Tél. : 450 687-9456, 1 866 340-9456
Télec. : 450 687-5155
export@silhouettone.com

SILHOUET-TONE (CANADA)

1985, Monterey
Laval (Québec) H7L 3T6 Canada
Tél. : 450 688-0123, 1 800 361-3004
Télec. : 450 688-0803
info@silhouettone.com

SILHOUET-TONE (U.S.A.) INC

1623 NW 84th Avenue
Miami, Florida 33126 U.S.A.
Tél. : 1 800 552-0418
stusa@silhouettone.com

SILHOUET-TONE (EUROPE) S.A.

9, route Suisse, CH-1295-Mies, Suisse
Tél. : +41 22 775-15 60
Télec. : +41 22 775-15 67
ste@silhouet-tone.com

SILHOUET-TONE FRANCE Sarl

14, avenue du Dr Palluel
74160 St-Julien-en-Genevois, France
Tél. : +33 4 50 49 45 32
Télec. : +41 22 775-15 67
stf@silhouet-tone.com

www.silhouet-tone.com



* Sites: Tolhurst, Monterey, Michelin.