



Operating instructions

Treatment tower

Wankelform



GHARIENI GMBH
GUTENBERGSTRASSE 40

47443 Moers

Tel.: +49 (0)2841 /88300 - 0
Fax: +49 (0)2841 /88300 - 999
Service Hotline: +49 (0)2841 /88300 - 40

E-mail: service@gharieni.de
Internet: www.gharieni.de

List of contents

1. Explanation of symbols	3
2. Safety instructions	3
3. General instructions	4
4. The Wankelform treatment tower	5
4.1 General	6
4.2 Initial startup	6
4.3 Power supply	6
4.4 Ring for accessories	6
4.5 Rotating drawers	7
5. Steamer	7
5.1 Filling water	7
5.2 Switching on the appliance	8
5.3 Applying steam	8
5.4 Reset function	8
5.5 Cleaning and maintenance	9
5.6 Discolouration of the heating coil	10
5.7 Technical specifications of steamer	10
6. Steam treatment combined with coloured light therapy	10
6.1 Technical specifications of coloured light	11
7. Optional herbal steam treatment	12
8. Power Block	14
8.1 Technical specifications of Power Block	14
9. IONO	14
9.1 IONO operation	14
9.2 Iontophoresis results	15
9.3 Desincrustation results	15
9.4 General contraindications	16
9.5 Treatment tips	16
9.6 Operation	16
9.7 Polarity	17
9.8 Technical specifications of IONO	17
10. VAC/SPRAY	17
10.1 On/Off switch	17
10.2 VAC port	17
10.3 SPRAY port	17
10.4 Using the spray bottles	17
10.5 Cupping glass application	18
10.6 Technical specifications of VAC	18
11. High-frequency (HF)	18
11.1 On/Off switch	19
11.2 Power output control	19
11.3 Handpiece socket	19
11.4 Treatment results	19
11.5 HF accessories	19
11.6 Using the accessories	19
11.7 General contraindications	20
11.8 Technical specifications of HF	20
12. Peeling unit	20
12.1 Fitting the brushes	21
12.2 Connecting the handpiece	21
12.3 Switching on the peeling unit	21
12.4 Accessories	21
12.5 Technical specifications for peeling	21
13. Hot/Cold	21
13.1 Application and operation	21
13.2 Technical specifications for Hot/Cold	22
14. Portable ultrasound treatment unit	22
14.1 Unit illustration	22
14.2 Introduction	22
14.3 General contraindications	23
14.4 Treatment with the ultrasound unit	24
14.5 Facials	27
14.6 Cleaning and maintenance	28
15 Guarantee provisions	29
16. Declaration of conformity	30

Edition / Revised version	Modification (pages)	Date
First issue/1st revised version	Page 11	February 2007
2 nd revised version	Page 19	March 2011

1. Explanation of symbols



CAUTION! This symbol warns against dangers. If this warning is not heeded, the user's, customer's or device's safety may be endangered.



CAUTION! Danger of electric shock.



Hints and tips for use.



CAUTION! Danger of being clamped (mainly a risk of injuries to the hands)



CAUTION! Hot surfaces! Danger of injury!



Do not dispose of this product as regular domestic waste at the end of its lifecycle, but hand it in to a collection site for recycling electronic and electrical devices. Do not remove this symbol from the product.

2. Safety instructions



The treatment tower must not be left unsupervised while it is switched on. Always switch off any device you have finished using. Every device has its own switch which must be switched off after use. The Power Block contains the main switch which switches off all functions.

The treatment tower is on 5 castors which can be locked. They must always be locked when putting the unit into use. You can lock the castors by lowering the levers on the five castors (see fig.).



Do not allow any unauthorized people to operate the treatment tower!

There is a cosmetic steamer in the Wankelturm unit. This works with boiling water and steam. It is absolutely vital that you read these instructions carefully and only use the unit as instructed here. This will protect both your own and your customers' safety. Handle the steamer with care. Never attempt to operate the unit without water. Only use **distilled water**. Mains water and demineralised water leave residues behind which will lead to faulty operation. If these instructions are not observed, the guarantee may be invalidated.



Never immerse the unit or any parts of it in water. When cleaning the unit or when filling the water tank, make sure that no water penetrates the device.

Regularly check that the power leads are intact and contact our Customer Service Department if any damage is found.

3. General

Dear Customer,

Congratulations on buying this high-quality product. Reading these instructions is definitely not a waste of time, but is crucial to enable the proper and responsible use of the device. Make sure that this manual is available to anyone using the device and make sure that it has been read and understood prior to using the device.

Intended use

This device must only be used for cosmetic treatments and by properly trained cosmeticians. No other use is permitted: it will affect your guarantee rights.

Before first use

Before first use make sure that all parts are available and that they are not visibly damaged. Make sure that the power outlet for the device is earthed properly and has the right voltage (230 V).

4. The Wankelform treatment tower

Steam outlet at the upper end of the swivel arm (turns through 360°)

Steamer arm can be swivelled and rotated through 360 degrees

Ring for accessories

Steamer lock

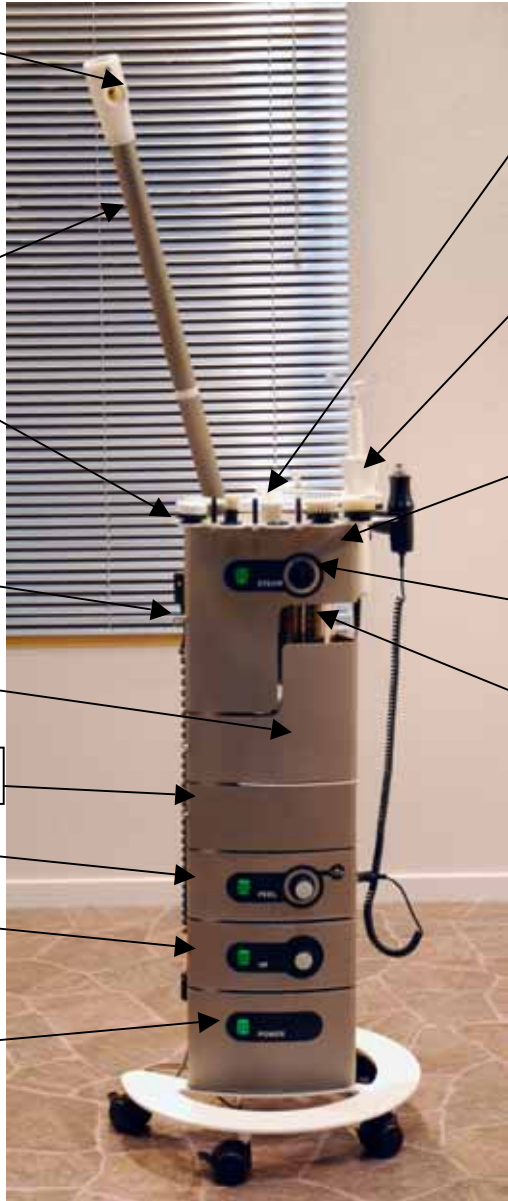
Cover for the water tank

Module 3 (rotating drawer)

Module 2 (peeling here)

Module 1 (HF here)

Power Block



Pocket for a magnifying lamp

Funnel to fill the water tank (F)

Steamer, swivels through 115 degrees to enable the water tank to be cleaned

Reset button

Water tank (C)



Lever to remove the water tank



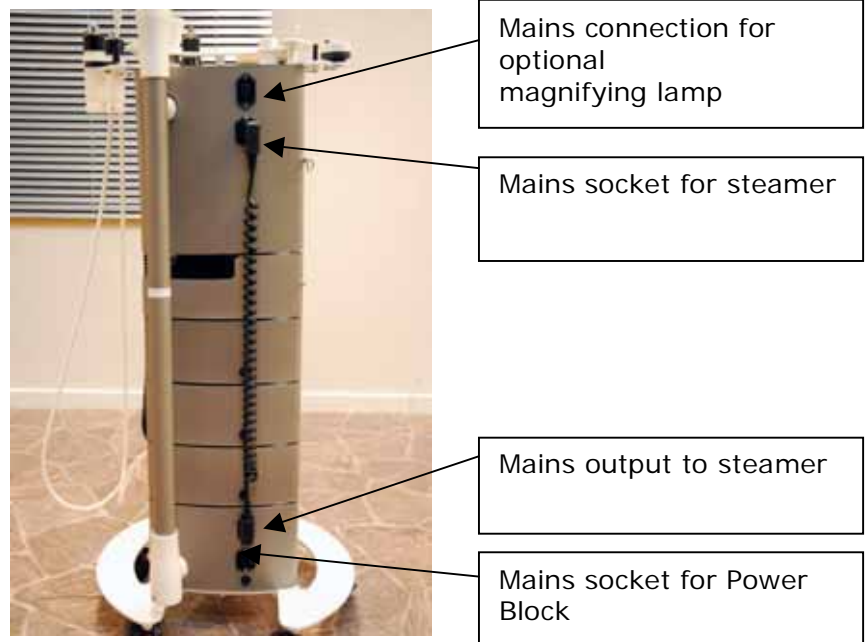
4.1 General

This treatment tower can be used to carry out various cosmetic treatments, depending on the configuration of the tower. In principle, there is a steamer in every tower. The treatment tower can accommodate three or five modules, which can be selected when buying the tower. The following modules are currently available: Peeling, IONO, Vac/Spray and HF units and a rotating drawer. In addition, there is a pocket to hold a magnifying lamp. The following modules are also available: steam treatment combined with coloured light therapy and a Hot/Cold unit.

4.2 Initial start-up

First fit out the treatment tower completely (see section on Accessories). Make sure that the main switch and all modules have been switched off before connecting the tower to the mains power. The picture (see below) shows the treatment tower from the rear. The upper connection is only intended for the use of a magnifying lamp. The thick coiled cable connects the Power Block (lower module) to the steamer head. Make sure that the plugs are connected as shown here. The mains inlet socket is located below the mains outlet. Please use the enclosed mains cable.

4.3 Power supply



4.4 Ring for accessories



Depending on the tower configuration, this ring can accommodate several accessories such as up to five brushes, peeling handpiece, IONO electrode and counter-electrode, two spray bottles, two cupping glasses, HF probe and Hot/Cold applicator.

4.5 Rotating drawers

Please observe the following if you have selected the rotating drawer module. The rotating drawers are mounted such that they can rotate (see ill.).



Note: there is a risk of your fingers getting clamped when a drawer is rotated.

5. Steamer

Facial steamers are among the main equipment used in cosmetic care. The benefits of the lukewarm steam which is sprayed on the skin are as follows: The steam softens dead skin cells so that they can be removed during the massage or while applying brushes. The hot, moist water vapour helps the pores to open so that they can be cleaned thoroughly. The steam penetrates deeply into the pores and softens grease, blackheads, make-up and other impurities so that they can be removed easily. The steam helps the pores to discharge toxic substances. The influence of the steam improves cell metabolism.



Use only distilled water since regular mains water and demineralised water contain substances which may affect the device's operation. Severe pollution such as scaling can lead to increased wear and will shorten the lifecycle of the device. Damage due to pollution is not covered by guarantee! Always drain the water tank after use to prevent pollutants being deposited in the residual water. See the section - Cleaning and maintenance. The steamer will only work reliably and to your satisfaction when the inside of the water tank, the heating coil, the steam pipe and the steam outlet nozzle are clean and free from grease. If the water becomes frothy, clean the glass and the heating coil with vinegar (see Cleaning!).

5.1 Filling water

Water may only be poured into the unit from the top through the funnel (F). Proceed with care. The water flows into the water tank (C).



The opening of the funnel (F) must never be closed or covered!



Make sure no water is spilt over the unit. Should you spill any water, immediately pull the mains plug and dry the treatment tower. Only fill the water tank to the level mark (red mark on glass tank). Please remember that the water needs some time to flow into the glass tank. Top up water again before the water level falls to below the heating coil.



Risk of scalding! Do not fill the water tank to more than its rated capacity, i.e. make sure that the water surface is not above the red mark on the glass tank. Should you have poured in too much water, remove the cold glass tank and pour out the excess water. Otherwise, the water might enter into the pipes and exit from the nozzle at the front as a result of the steam pressure when the water is boiling.

5.2 Switching on the unit

Press the button on the steamer (see ill.). The red light in the switch will go on to indicate that the unit is ready for use.



The steam is emitted through a swivelling arm which houses a second (micro) switch. To activate this switch, turn the steamer arm upwards, i.e. a couple of degrees above a horizontal position. To temporarily switch off the device, rotate the arm down. This is independent of the direction of rotation for both sides. The water starts to boil after five to eight minutes and the first steam is generated one to two minutes later (based on an initial water temperature of approx. 20°C).

5.3 Steam application

The steamer arm can be turned through 360° (see ill.). The recommended steam application duration is 10 to 15 minutes. If the water tank has been filled to its maximum level (to the red line - never more!) and the steamer is switched on, it will take 35 to 40 minutes before the steamer switches off again because there is not enough water left.



Risk of burns! Never put your hand too near to the steam outlet nozzle opening. Always observe a minimum distance of 35 cm to the skin zone to which steam is to be applied.



To prevent the steamer being switched off automatically by the thermal cut-out safety switch, you can top up distilled water during the steam treatment while the steamer is switched on. Please note that the red max. filling level mark must not be exceeded when filling or topping up the unit. The automatic cut-out switch is a safety device to prevent the unit from overheating; do not use this as the standard way to switch off the steamer. Depending on the amount of water in the unit, it will take a little time for the steam to be generated, since the steamer needs some time to reach operating temperature again. We advise adjusting the amount of water to the treatment time.

5.4 Reset function

If the unit switches off by itself, the water must certainly be topped up. The unit can then be put into use again by pressing the reset button (see ill.).

In addition to straightforward steam application to hydrate and clean the skin, you can also use the steamer in various ways for special treatments.



Never pour any ethereal oils into the water tank since this will contaminate both the tank and the heating coil, making the unit unfit for use. In addition, these oils cause the water to froth and spatter.

5.5 Cleaning and maintenance

Clean the steamer when deposits become visible on the heating coil or when dirt is visible in the water tank. Clean the housing and the fittings with a damp cloth or sponge and some soap. Make sure that no water can penetrate the housing.



Never open the unit when the water is still hot. Wait for the glass tank to cool down.

Unlock the steamer lock by pulling the ring away (see ill.)

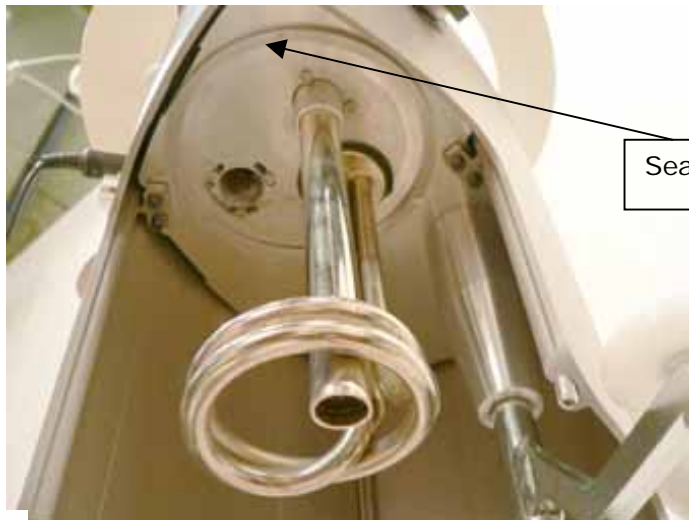


Turn the upper part of the steamer in an anticlockwise direction (to the left) until the stop (see ill.).



Removing the glass tank: Hold the water tank with your left hand. Pull the lever with the knurled-head screw down and swivel it sideways. Remove the water tank and clean it.

Installing the glass tank: Place the water tank (without water) in the round pocket at the lower side of the steamer (see ill.). The correct seat of the glass tank in the seal ensures trouble-free operation. Secure the water tank with the lever again. Turn the steamer head in a clockwise direction until the lock pin engages.



Sealing ring (U-shaped)



Note: danger of fracture! There is a danger of the glass tank breaking if it is not seated correctly in the sealing ring!



Check the power cord at regular intervals. Please contact our Customer Service Department if you find that the cord is damaged (cracked or torn).

5.6 Discolouration of the heating coil

The heating coil discolours quickly, even right after the first treatments. This is quite normal since it is subjected to enormous temperature variations, so there is no reason for concern.

5.7 Technical specifications of steamer

Mains voltage:	110-120V
Frequency:	50-60 Hz
Rated output:	max. 950W
Fuse:	10 A slow acting
IP category:	I
Storage capacity	max. 0.75 litres for approx. 40 min of steam
Heating time	to boiling temperature (20° -> 100°C) approx. 8 minutes

6. Steam treatment combined with coloured light therapy

This module makes use of heavy duty RGB LEDs. By mixing together three colours, red, green and blue, a visible colour spectrum of more than 16 million colours can be created. This module combines the eight most common colours for this type of treatment and can improve your customer's physical and mental wellbeing. You can use the LED colour therapy in many ways, with or without steam, for the face or the body. You can call up different modes in the sequence described here, using these coloured LEDs: First switch on the module by pressing the button (see ill.). All colours listed here will now light up in turn, in the colour sequence of a rainbow (see below), i.e. they continuously change into each other. You can interrupt this mode by pressing the button, so that the second mode is activated. Starting with white, you now have the possibility to select an individual colour by pressing the button the number of times required. Switch the module off after the last colour (green) by pressing the button again. The complete process starts again from this point. The module will switch off automatically after twenty minute irrespective of the current mode. If this happens there is no need to wait: you can continue the treatment as you please.

The first "colour", the white light of the LEDs, is made up of the entire colour spectrum.

-Yellow promotes serenity, cheerfulness and comfort. This stimulates gland activity so that the body can better detoxify itself. Both the sense of touch and the temperature perception will be sensitized.

-Orange can improve optimism and joy in life. It reinforces the need for enjoyment and sensuality. Metabolic products are broken down faster and cell renewal is supported.

-Red signifies activity and movement. This colour specifically addresses the heart, kidneys and muscles and stimulates the circulation of the blood. It stimulates the skin's metabolism.

-Magenta has a harmonising and balancing effect on the total body. It stimulates the heart, the kidneys and the circulation of the blood.

-Violet is one of the 'cold colours' and has a balancing effect. It can improve sleep and achieve an elevating and liberating effect.

-Blue is for rest, recuperation and relaxation. This colour is used to treat nerves, skin and eyes. It can help improve the epidermis (via the stratum spinosum where the keratins are formed).

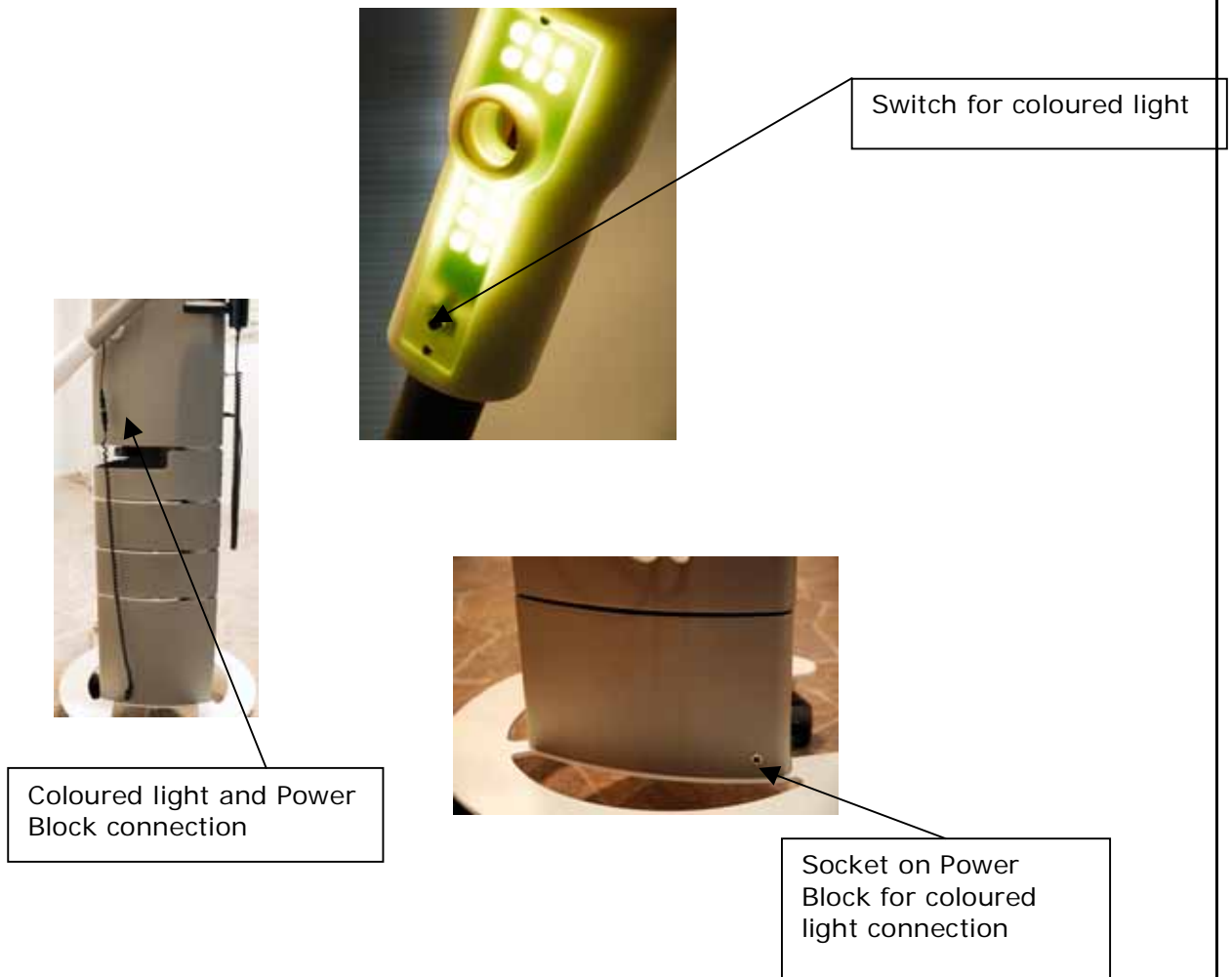
-Turquoise has invigorating, cleaning and pain-soothing effects. It can reduce headaches and nervousness. Skin problems are reduced by stimulating regenerative processes.

-Green has a stress-reducing and eye-improving effect. Irritated skin can be pre-treated with this colour. It helps to regulate the gland functions and, as a result, the overall condition of the skin.



Caution! Make sure that your customers never look directly into the light or look into it without eye protection. We enclose one pair of special safety

glasses for the treatment. Additional glasses can be ordered from us, art. 41844.



6.1 Technical specifications of coloured light

Mains voltage:	110-120V
Frequency:	50-60 Hz
Rated output:	2.7 W
Voltage:	12V DC
Current:	225mA
IP category:	I

7. Optional herbal steam treatment



Make sure that the herb sieve is in a proper condition before putting this into use! Otherwise the water may be contaminated, resulting in the risk of burns due to frothing.



Never open the lid of the herb sieve during operation: risk of burns!



Never fill water through the opening for the herb sieve!



Never put herbs or ethereal oils on a cotton wad directly into the opening. Put them into the special herb sieve by removing the lid from the sieve by pulling!



Never remove the round cover disk from the bottom of the sieve; it prevents pollutants such as herbal residues seeping through.



Whenever the steamer has been used WITH HERBS or OILS, the water tank must be removed, drained and cleaned completely; otherwise there is a risk of burns due to frothing. Please read the chapter on "**Cleaning**".

If you have selected the herbal steam treatment option, the steamer will have a special device which enables the use of ethereal oils and herbs.

Herbs or ethereal oils must be added as follows before putting the steamer into use. First pull the lid from the herb filling device and then pull the suspended herbal sieve loose. Make sure that the bottom of the sieve is covered by a round stainless steel plate. You can now fill the sieve outside the opening:

Herbs:

Make sure that the composition of the herbs selected is not too fine, since they might otherwise pass through the sieve mesh openings. Add no more than one teaspoon of the herbal mixture suitable for the skin in question into the sieve. Only use herbs suitable for the type of treatment. Now first place the lid on the sieve and then put the sieve in the opening! Always make sure that the lid is pushed on tightly and against the stop. You can then proceed with the regular procedure.

Ethereal oils:

For aromatic steam treatments only use a cotton wad and apply no more than three drops of pure ethereal oil to it. Now continue as described in the chapter "**Herbs**".



Never pour the ethereal oils directly into the water! This would lead to the risks of frothing and burns.



Always push on the lid until the stop! Otherwise the rubber seal will not seal correctly and hot steam may escape, preventing the device from working properly. In addition, there is a risk of burns!



Carry out a visual check of both sealing rings of the herbal sieve lid every now and then! Refrain from using the steamer if one or both rings are missing or show defects! If this is the case, please contact our Customer Service Department.

Remove the herbs and/or the cotton wad as follows after the treatment:

Wait for at least 20 minutes to enable the steamer to cool down to room temperature! Keep a cloth handy. Pull away the lid with the sieve and hold the cloth under it as a safety precaution. We recommend carrying out the cleaning procedure over a sink. Remove the lid from the sieve, dispose of the residues and clean both parts under running water. The parts can now be dried and reassembled; then install the lid tightly.

Clean the steamer's water tank as described in the chapter "**Cleaning**".

8. Power Block

The Power Block is a kind of central unit. Both the main switch and the main fuse for the overall treatment tower are located here. If the treatment tower has been fitted with steam treatment combined with coloured light therapy and/or the Hot/Cold function, the power supply units for these optional units will be located in the Power Block.



In principle, the main switch for the total treatment tower must be off when no units are being used!

8.1 Technical specifications of Power Block

Mains voltage:	110-120V
Frequency:	50-60 Hz
Fuse	2 x 10 A slow-acting
IP category	I

9. IONO



9.1 IONO operation

The basics of iontophoresis are outlined below. When in doubt, check a textbook or attend an appliance course organised by your dealer.

There are two kinds of electric current: alternating current and direct current. Since alternating current changes its direction at regular intervals, there are no fixed positive or negative poles. Direct current always flows from the positive pole (+) to the negative pole (-). An iontophoresis/desincrustation unit only works with direct current. An iontophoresis/desincrustation unit is used to work certain active ingredients into the skin, past the skin barrier. This is also called "channelling in". To explain this in more detail, some elementary physics and chemistry is required. All matter which we see around us mainly consists of molecules. These molecules consist of atoms which in turn consist of a core of protons and neutrons – surrounded by electrons. If the number of positively charged particles in an atom is not equal to the number of negatively charged particles, the atom is referred to as an ion. An ion can either be positively or negatively charged, depending on whether it has too many or too few electrons. These electrons are always negatively charged. Finally one should consider that counterpoles attract each other and that particles with identical charges repel each other; this largely explains the theory underlying this device.



The speed at which the ions penetrate the skin is determined by the amount of the electrical current. Since the current must be limited during this treatment, a sufficiently long treatment time must be planned.

The following can be concluded from this: Two electrodes always have to be used to enable this appliance to work. One electrode forms the positive pole (+), the other one the negative pole (-). The positive ions (cations) are attracted by the negative pole of the appliance and then repelled by the positive pole. The negative ions (anions) are attracted by the positive pole of the appliance and then repelled by the negative pole. The manufacturer of products which can ionise will indicate clearly via which pole the products must be "channelled in"; you cannot determine that yourself.

9.2 Iontophoresis results

The objective of iontophoresis is to "channel in" cosmetic products in accordance with the precise instructions of the manufacturer of the products in question. When ions are discharged at the electrodes, i.e. lose their charge, acids are created at the positive electrode, which may have a firming effect on the skin tissue. Bases are created under the negative electrode; they have a softening effect on the skin. This latter effect forms the basis for desincrustation.



Since these acids and bases can also irritate sensitive skin, it is important that customers are first tested for this sensitivity by limiting the first treatment to a short period and working with low current.

The skin temperature can increase locally by 3°C. This increase can last for several hours.

This stimulates the circulation of the blood and the metabolism, with all positive effects which result from this.

However, as a side-effect, this increase in skin temperature may cause a burning sensation in some people. Customers must also be tested for this first.

9.3 Desincrustation results

Desincrustation means removing crusts. Desincrustation is used to prepare an oily skin affected with blackheads so that the blackheads can be removed more easily. The theory is practically identical to iontophoresis. The medium used for desincrustation can be a solution of 6% kitchen salt in distilled water, or a product specially marketed for this objective. Desincrustation produces sodium hydroxide (NaOH) under the positive electrode. This softens the fatty acids in the outlet openings of the sebaceous glands, making blackheads easier to treat. The treatment has a softening effect on the epidermis.



Care must be observed here as well; limit the duration to a maximum of 10 minutes and make sure that the skin is not irritated too much.

9.4 General contraindications



This device must only be used on people who are in good health. When in doubt, first consult a general physician. Never treat any customers who have a pacemaker (device to regulate the heart rate), who suffer from fever, pain, infections, thrombosis etc., who are pregnant, who have an oversensitive skin or blood circulation disorders, who suffer from heart diseases or disorders, who are epileptics, or who are a member of any other risk group.

9.5 Treatment tips

The beautician and the customer must remove all metal objects which come directly into contact with the skin, such as rings, bracelets, earrings etc. Even metal tooth fillings can cause customers to get a strange taste in their mouth. During the treatment make sure that you and your customer do not touch any metals or other conducting objects. The current regulator knob must always be turned fully anti-clockwise (to its minimum position) before applying the active electrode to the skin. This also applies to removing this electrode and to reversing polarity. Otherwise the customer might experience an unpleasant prickling effect.

The application time is more important than the level of the current for iontophoresis and desincrustation. Please remember that since most people are terrified of electric current, even the slightest prickling will be perceived as unpleasant. The motto is: it is better to use a lower current and the full treatment duration than the other way around. Please remember that the nerves get accustomed to the prickling effect of electricity very quickly, so that it is no longer felt after a few minutes. You must therefore start every treatment at the lowest current control level and then gradually go to the required level without allowing the contact between the active electrode and the skin to be broken.



The settings mentioned here only serve as reference values since the sensitivity to electric current differs from one person to the other. Differences can already be detected in one and the same person from the one day to the next.

9.6 Operation



Install and connect the electrodes (see ill.). Turn the current regulator knob fully to the left (anti-clockwise) to its minimum position, at the start of every treatment (regulator knob, ill.). Switch the ON/OFF switch of the IONO module to "1", when everything is ready. When the unit has been switched on, the green indicator in the switch will light up.

9.7 Polarity

As explained in the chapter "IONO", the positive pole can be determined freely with this module, using the toggle switch (see ill.). If the toggle switch is pointing to the left, the left output is positive (shown with a red cable connection in the illustration, left). If you flick the switch (to the right), the positive pole is on the right (shown with a black cable connection in the illustration). Before reversing poles, first turn the current regulator knob fully to the left (anti-clockwise). The current level is indicated by a sequence of green LEDs; every LED that is lit signifies a current of 0.2 mA. This means: 1 LED = 0.2 mA; 2 LEDs = 0.4 mA; 5 LEDs = 1.0 mA etc. Before removing the active electrode from the skin after the treatment, turn the current regulator knob fully to the left (anti-clockwise) again. Switch off the unit before removing the electrodes!

9.8 Technical specifications for IONO

Mains voltage:	110-120V
Frequency:	50-60 Hz
Rated output:	max. 5W
Fuse:	1 x 1 A slow-acting
IP category	I

10 VAC/SPRAY



10.1 On/Off switch



The switch for the VAC/Spray module is located on the front of the device. Do not operate the switch until everything is ready for the treatment. The On/Off switch switches the power supply to the device on or off.

When the switch is on "0", the device is off. When the switch is on "I" (the green indicator light in the switch is lit), the device is on.

10.2 VAC port

This port draws in the air. You will need the left-hand hose connection in combination with cupping glasses for this.

10.3 SPRAY port

The right hose port is used to spray liquids. Please fit a spray bottle here.

10.4 Using the spray bottles

Both bottles are suitable for light liquids. To spray liquids, block the little hole at the top of the bottle with a finger.



No more than one bottle can be used at any time. The liquid to be used must be "light", i.e. equal to water (lotion, alcohol etc.). "Heavy" liquids (e.g. oil) cannot be sprayed.

10.5 Using the cupping glasses

If everything has been connected properly (see above), place the cupping glass on the location to be treated and close the little opening by holding a finger over it. As soon as you remove your finger from the opening, the cupping glass will no longer exert a suction effect.



Three different cupping glasses are enclosed as standard. We also supply other cupping glasses and suction bells.

10.6 Technical specifications of VAC

Mains voltage:	110-120V
Frequency:	50-60 Hz
Rated output:	max. 65W
Fuse	1 x 2 A slow-acting
IP category	I

11. High-frequency (HF)

The HF high-frequency probe was devised for use in cosmetic treatments; other forms of use are not allowed and affect your guarantee rights. Before first using the HF probe, check that the handpiece shows no visible damage and that there are no remnants of defective electrodes in the handpiece.



High-frequency alternating current has been used for medical purposes for more than 130 years. It has been used for cosmetic treatments for some 60 years.

High-frequency current, which is generated by this device, is very safe because the current output (amperage) is very low. Jumping sparks are generated by applying a very high voltage. The prickling sensation is created by the high-frequency current which causes some millions of sparks to jump off the electrode every second. Current is usually transferred to the skin by using glass electrodes. The shape of these electrodes varies considerably. The inside of the electrode used is virtually void of air. The current, which attempts to flow from the electrode to the body, ionises the thin air in the electrode. As a result, the electrode will light up and look blue. As a by-product of the millions of jumping sparks, oxygen (O₂) is converted into ozone (O₃).



NEVER test the HF probe if the electrode is not in contact with the skin. This would result in high costs of repair which are not covered by the guarantee provisions.



Never use the device in combination with flammable care products (e.g. foam products with flammable aerosol). Observe the adjacent symbol! Explosions may occur. There is a risk of serious burns! If an electrode breaks, you must return the handpiece to us. Never attempt to remove any remnants of broken electrodes yourself!

11.1 On/Off switch



The On/Off switch is located on the front of the device. Do not operate the switch until everything is ready for the treatment. The On/Off switch switches the power supply to the device on or off.

When the switch is on "0", the device is off. When the switch is on "I" (the green indicator light in the switch is lit), the device is on.

The handpiece housing contains a red button which must not be pressed until there is an electrode in the front handpiece and everything is ready for the treatment. Only then is the HF unit operational and the current will flow.

11.2 Output voltage regulator knob

This regulator knob is located on the front panel (see ill.) and it is used to control the voltage available at the output (electrode). At the start of the treatment, the knob must always be in the minimum voltage position.

11.3 Handpiece socket

This socket is used to connect the electrodes and is located inside the handpiece (HF probe). The electrodes are just pressed in and held by the probe.



The enclosed handpiece cover must always be used to prevent the risk of electric shocks!

11.4 Treatment results

High-frequency alternating current is used to stimulate the circulation of the blood in the skin layers. The result is a slight temperature increase due to the prickling effect of the sparks jumping onto the skin. This treatment is especially pleasant for an epidermis with seborrhoea, since this type of skin reacts very little and is closed.

The ozone that is created has a locally activating and disinfecting effect on the skin.

11.5 HF accessories

In addition to the handpiece and the cable, the following HF electrodes are supplied with every HF module as standard:



"large bulb-shaped electrode" "small bulb-shaped electrode" "neck / chest electrode"

Other HF electrodes can be used **in addition to these**. They must be **ordered separately**: "spiral" type, "comb" type, "open" type

11.6 Using the accessories



First release the button before removing the electrode from the skin – never the other way around! Otherwise the HF probe will be damaged. Install an electrode in the probe and ensure that it makes contact with the skin. Switch on the device switch (the green lamp in the switch will light). Now start the treatment with the HF probe by pressing the red button on the probe. The HF probe continues to be switched on for as long as you press the button.

"Large bulb-shaped electrode": This electrode is used the most. It is used to treat all parts of the body. It can also be used to treat wrinkles by putting the narrow side of the electrodes on the skin.

"Small bulb-shaped electrode": For intensive treatment of small surfaces.

"Neck/chest" electrode: The clue is in the name. Its half-moon shape makes it suitable for the parts of the body referred to above

Just like lamps, electrodes are subject to wear.



Attention: Please attend for protection against voltage:



1. Before using the device you had to stick the safety cap on the tool holder.
2. Never use the device without the safety cap.
3. Always use the HF-device with connected safety cap.



Since the unit will be damaged if you try to work with burnt-out electrodes, you must replace the electrodes at regular intervals.

11.7 General contraindications



Do not use high-frequency current in the following situations: expanded capillaries, sensitive skin, erythrosis, rosacea, warts and fibromas which have not been examined by a medical doctor, and **never** use it on people with a pacemaker or who suffer from heart disease or disorders or who are epileptics

11.8 Technical specifications for HF

Mains voltage:	110-120V
Frequency:	50-60 Hz
Rated output:	max. 30W
Fuse:	1 x 1.0 A slow-acting
IP category	I

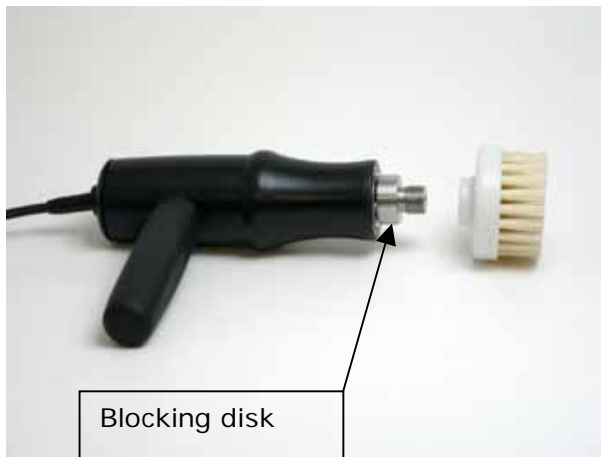
12. Peeling unit

The "Peeling unit" was developed for use in cosmetic skin care. It is used to clean the skin using brushes and grinding stones.



12.1 Fitting the brushes

The round **motor housing** is also the handpiece (see ill.). **Blocking disk** (round, knurled disk immediately at the front end of the handpiece thread). This disk is held when replacing brushes or a pumice stone. The parts (brush, pumice stone etc.) are screwed onto the **rear thread end**. Install in a clockwise direction, remove in an anti-clockwise direction (see ill.). The handpiece grip can be removed by unscrewing it (see ill.).



12.2 Connecting the handpiece

The handpiece is connected to the diode bush by inserting it into the bush. The diode bush is located on the rear side of the Wankelform tower housing.

12.3 Switching on the peeling unit

Put the peeling unit switch in its ON position. The rotary knob is used to switch the handpiece on and off and to control the speed (see ill.).

The direction of rotation is determined by means of the toggle switch on the front of the peeling unit (left = rotation in an anti-clockwise direction, right = rotation in a clockwise direction).



Note! Make sure that the peeling brush is screwed tightly onto the thread of the handpiece; otherwise there is a risk of the brush coming loose when carrying out treatments with an anti-clockwise direction of rotation.

12.4 Accessories

- a handpiece with a grip handle,
- a soft brush ϕ 20 mm,
- a soft brush ϕ 45 mm,
- a hard brush ϕ 45 mm,
- a pumice stone ϕ 45 mm,

Handpiece



12.5 Technical specifications for peeling

Mains voltage:	110-120V
Frequency:	50-60 Hz
Rated output:	max. 25W
Fuse:	2 A slow acting
IP category	I

13. Hot/Cold



For painless tissue toning and regeneration, and to soothe painful muscles. Heat and cold are available to the user within a few minutes of the Hot / Cold applicator being switched on. Bio-energetic reflexes and local vessel gymnastics – brought about by targeted heat and cold treatments – open up a completely new spectrum of treatments: highly effective facials or cellulite treatment – the Hot / Cold applicator enables you to achieve results that can be seen and felt immediately.

The method: the heat treatment is intended to stimulate the metabolism. The vessels are dilated and the valuable active ingredients of the skin care products can penetrate into the deeper skin layers. This significantly strengthens the effect of the preparations and it brings about mental and physical relaxation. The capillaries respond to the cold treatment by constricting temporarily. The blood vessels are then filled again and dilate. These vessel gymnastics strengthen and firm the skin, and thus also improve the elasticity of the vessel walls. The cold treatment brings about a long-term refreshment effect. The skin is sealed and the special product which has been channelled in can impart its full effect. Any pains or swellings can be reduced with a therapeutic cold massage. The hot side of the Hot / Cold applicator (5 possible selections between 32° and 45° Celsius) is used to pleasantly stimulate the circulation of the blood and to relax cramped muscles.

13.1 Application and operation

After switching on the unit, the required temperature range for the heat treatment is pre-set on the Hot / Cold applicator. As soon as the Ready symbol lights up, the cosmetic product (cream, mask or gel) is applied to the thoroughly cleaned skin and is then gently worked in using the hot side of the Hot / Cold applicator while applying light pressure. When the heat treatment has been completed, further treatment with the cold side of the appliance follows. The fact that the blood vessels have closed seals the skin and enables the active ingredients of the cosmetic products to impart their full effect.

Operating the Hot / Cold applicator: Press the yellow Start/Stop button to switch on the unit. After you have pressed the Start button, the "Wait" dot will light up. Select the required temperature range (5 possibilities) using the orange "Temp" button. The

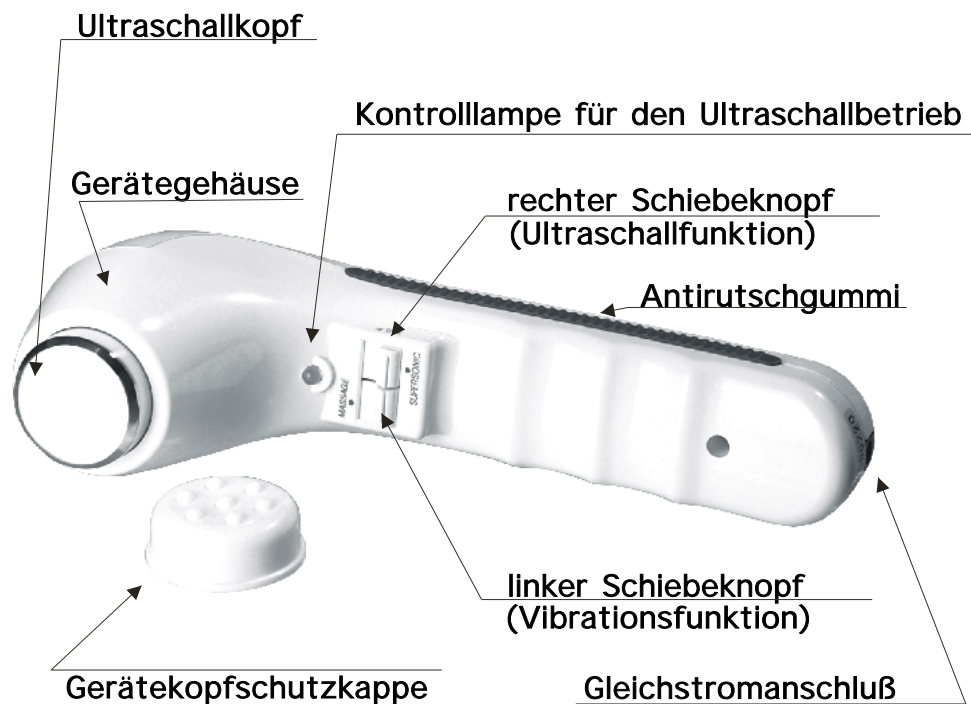
temperature range can be adjusted at any time. As soon as the Ready symbol lights up, you can start the hot massage as described above. The cold side is prepared in the meantime. When you have finished the heat treatment, you can now end the beauty treatment with the cold side (sealing the skin).

13.2 Technical specifications for Hot/Cold

Mains voltage:	110-120V
Frequency:	50-60 Hz
Rated output:	max. 45W
Fuse:	0.6 A slow acting
IP category:	1
Heating stages:	5
Cold stages:	1

14. Portable ultrasound treatment unit

14.1 Unit illustration



14.2 Introduction

Ultrasound therapy is a massage effect which is achieved by highfrequency micro-vibration. The applicator reaches a frequency of over 20 KHz. The heat treatment stimulates the blood and lymphatic circulation, which demonstrably improves the human metabolism.

This appliance makes use of a ceramic unit to generate 1 million micro-vibrations per second. A suitable gel is applied first so that the ultrasound can penetrate the body better.

The applicator in this appliance achieves an effective intensity of 0.5W/cm² while carrying out a body and face massage. The following can be achieved:

- pain reduction
- muscle stimulation
- improved circulation of the blood

Observe these instructions when operating the unit.

14.3 General contraindications



If any of the electronic medical aids listed below is used, ultrasound treatment is URGENTLY advised against to prevent these aids failing:

- active medical aids, such as e.g. cardiographs,
- implanted medical aids, such as e.g. pacemakers,
- life-supporting electronic aids such as e.g. breathing equipment



Consult a doctor before carrying out any treatments with the appliance if the following symptoms are present:

- pregnancy
- heart disease
- patients suffering from bleeding disorders (haemophilia)
- acute diseases
- abnormal blood pressure
- pernicious tumours
- a poor physical condition
- swelling of the blood vessels
- infectious diseases
- proneness to high fever



Refrain from using the ultrasound appliance in the following zones:

- eyes and area around the eyes
- heart area
- wounds
- skull area
- reproductive organs
- skin that has had an allergic reaction to cosmetics
- areas which have been subject to plastic surgery
- areas with metal or silicone implants

14.4 Treatment using the ultrasound unit

Checking the ultrasound operation

Hold the applicator horizontal and apply some drops of water to the surface of the applicator.

The indicator will light up as soon as you push the right-hand slide button upwards. A beep will sound at the same time. The unit will then start generating ultrasound.

The ultrasound signal causes the water drops on the applicator to vibrate at a frequency of one million vibrations per second.

If you now operate the left-hand slide button for the mechanical vibration, the indicator for the ultrasound function and for the timer will not light up again!

Treatment

1. Remove any make-up and clean the areas of the skin to be treated.
2. Plug the adapter plug into the handpiece socket.



Only use the ultrasound unit in combination with the adapter and plug supplied with the unit. Never use other adapters since this would damage the unit.

3. Connect the adapter to the mains.
4. Now remove the cover and apply some gel to the applicator and to the skin area to be treated.



We recommend approx. 4 to 5 g of gel for every treatment, 80 % of which should be applied to the surface of the massaging head.

5. Operate the right-hand slide button. A beep will sound. This starts the ultrasound operation and the timer.



Only use the low setting (LO) when treating allergic and/or sensitive skin. You can set the unit to the second stage (HI) for normal skin.

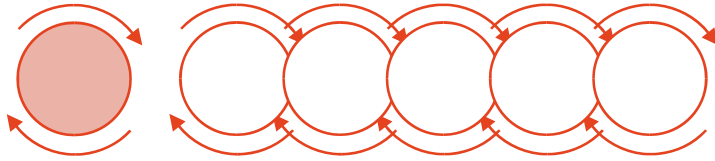


Only use the treatment methods described below. Also read the section "Facials" below.

6. Apply the applicator to the skin so that it makes light contact. The movements you make with the applicator must also be light, i.e. you must not exert strong pressure on the skin.

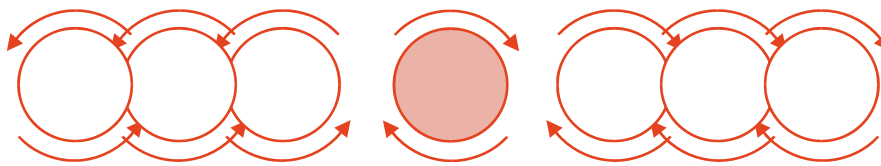
Operation of the ultrasound head

Please observe the treatment methods described below.



straight, circular, rotating movements

Place the applicator at the point where you would like to start the treatment. Gradually move the applicator in one direction in little circular rotating movements.



symmetric, circular, rotating movements

Place the applicator at the point where you would like to start the treatment. Perform little circular rotating movements and move the applicator in a random direction. Then move it in the opposite direction from the starting point, again performing little rotating movements.



You can also switch on the massage effect to achieve a relaxing sensation during the treatment.

Instructions on the use of contact gel

You must use contact gel between the applicator and the skin to make an effective treatment with the ultrasound appliance possible.

Always use gel with the following properties as the contact medium:

- It must not penetrate the skin too fast.
- It must not lead to visible pollution.
- It must not trigger any chemical reactions.
- It must not generate any bubbles or blisters.
- It must not lead to an unpleasant sensation on the skin.
- It must have conductive properties.



Demineralised or distilled water is one of the best conductive media. However, since the appliance is not water-tight, you must NEVER USE it IN WATER!

Contact gel enables up to 70% of the ultrasound energy to be channelled into the human body. You can buy the gel from a qualified dealer or via your medical doctor.



If the ultrasound indicator is flashing and the beep can be heard during the treatment, this means that there is either too little gel between the applicator and the skin or the pressure exercised is too high. Please note that too little gel and excessive pressure will cause heat to be

generated inside the applicator, as a result of which the thermal cut-out will be triggered. The thermal cut-out is triggered at a temperature of over 41°C. Apply sufficient gel to the applicator if this happens. Wait for the appliance to return to its normal status and then continue the treatment.

The timer is stopped if the thermal safety cut-out is activated. When the appliance has cooled down, the timer will start again for the time still remaining.

After having been overheated, the appliance will usually need 1 minute to cool down. If insufficient gel is applied to the applicator, the appliance will permanently switch between its overheated state and its operating mode.

The maximum treatment time is 10 minutes. The indicator will flash after this time. The beep will sound five times as well. The unit then switches itself off.

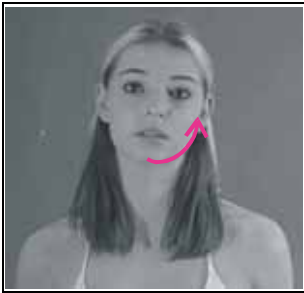


Switch off the unit when you have finished the treatment and pull the mains plug.

Use only cotton cloths to clean the appliance by removing the residual gel. Then fit the cover on the applicator.

Use fresh water to wash the residual gel from the customer's face.

14.5 Facials



1. From the underside of the chin to the underside of the ear.



2. From the chin to the front of the ear.



3. From the corner of the mouth to the upper side of the ear.



4. From below the side of the nose to the lower temple area.



5. Around the nose.



6. From the side of the nose to the lower temple area.



7. From the corner of the mouth to below the eye zone (DEFINITELY DO NOT TREAT the eyes).



8. From the corner of the mouth to the cheeks.

14.6 Cleaning and maintenance



Never immerse the unit or any parts of it in water.

Make sure that no water gets into the appliance.

After use always clean the entire appliance with a cotton cloth. Never use white spirit or naphtha to clean the unit. Do not use any coarse-fibre cloths which might scratch the surface of the applicator and the overall unit.

The ultrasound unit requires no maintenance.

Troubleshooting

Please consult the list below to remedy any failures. Contact us if a failure cannot be remedied.

Failure	Causes and remedies
The device does not work after it is switched on.	<ol style="list-style-type: none"> 1. Check that the cord of the adapter has been plugged into the unit. 2. Check that the adapter is connected to the mains.
The ultrasound or vibration effect is too slight.	<ol style="list-style-type: none"> 1. Check that the mains voltage complies with the adapter voltage. 2. Check that the specifications on the adapter are correct.
The acoustic overheating mechanism warning signal does not stop.	Check that the appliance has not been used at extreme temperatures ($\geq 38^{\circ}\text{C}$).

15 Guarantee provisions

Gharieni GmbH supplies all new equipment subject to a 2-year guarantee. Wearing parts (such as e.g. incandescent lamps, UV lamps, glass panels, consumables etc.) are not covered by this guarantee. Damage or loss due to unprofessional or improper use, non-compliance with the provisions of the instructions for use and/or gross negligence is not covered by guarantee either. In addition, the guarantee is invalidated if any stickers (such as e.g. the type plate, instruction notices etc.) are removed or if appliances or parts of appliances are opened without this being explicitly allowed in the operating instructions (e.g. for cleaning).

Environmental conditions for storage and transport

Temperature	ambient temperature -30°C to 55°C
Relative humidity	10% to 90% non-condensing

Ambient condition during use

Temperature	ambient temperature 10°C to 40°C
Relative humidity	30% to 75% non-condensing

KONFORMITÄTSERKLÄRUNG
EC DECLARATION OF CONFORMITY
DECLARATION CE DE CONFORMITE

Wir / We / Nous

Electro-Medical Gharieni GmbH

(Hersteller/Manufacturer/Fabricant)

**Gutenbergstr. 40
D-47443 Moers
Germany**

erklären, dass das Produkt
declare that the product
déclarons que le produit

(Typ oder Modell, Bezeichnung / Type or model, name / Type ou modèle, nom)

**Treatment tower
Wankelform**

produziert wurde entsprechend den Vorgaben der

Niederspannungsrichtlinie **2006/95/EG**,
EMV- Richtlinie **2004/108/EG**,
Maschinenrichtlinie **2006/42/EG**.

is produced in accordance with the requirement specified in

Low Voltage Directive (LVD) **2006/95/EG**,
electromagnetic compatibility **2004/108/EG**,
Safty of Machinery **2006/42/EG**.

est produit conformément aux exigences de la directive

Directive basse tension **2006/95/EG**,
Compatibilité Electromagnetique **2004/108/EG**,
Directive machines **2006/42/EG**.

Moers,23.06.2010

Ort und Datum
Place and date
Date et lieu



Geschäftsführer: S. Gharieni
Executive president
Directeur