

DERMASWEEP[™] mini



© 2007 DermalSweep. All Rights Reserved. Patent Pending.

DermaSweep® Mini MicroResurfacing[™]

Table of Contents

Introduction.....	1
History of Microdermabrasion.....	2
General Warnings and Precautions.....	3
Indications and Contraindications.....	4
DermaSweep MINI Console & Components.....	5
Technical Specifications.....	7
Accessories.....	8
System Set Up.....	10
DermaSweep Treatment Tips.....	11
Basic DermaSweep Microdermabrasion.....	12
Cleaning and Sterilization.....	19
Warranty.....	20
Re Order Form.....	21

The DS6000MD, DS7000MD, DS8000PRO, DS9000PRO, DS5000MI and DS5400MI and accessories are
manufactured in the United States of America .

US FDA Registration Number : 3007035827

Patents Pending Worldwide

Introduction

The DermaSweep® MINI System is a particle free microdermabrasion system and is used to perform non-invasive skin rejuvenation treatments. Its flexibility, precision, and control, delivers optimum benefits and treats a wide variety of skin conditions and skin types.

Using a variable-level vacuum system and an assortment of bristled treatment tips, the DermaSweep® wand gently lifts the skin against the appropriate treatment tip, removing the topmost layer of skin in a precise and controlled manner.

Our patent pending bristle technology was developed to prevent the build up of keratin on the tips which has been a problem with other particle-free systems that use industrial strength diamonds for exfoliation. Additionally, we have advanced beyond outdated modalities that used irritating and messy particles to abrade the skin to more effective yet more comfortable treatments.

The DermaSweep® system cleanly exfoliates the epidermis and then vacuums away the dead skin. The airflow design allows the vacuum pressure to be used in a safe yet increasingly effective manner.

The skin is left smoother as the vacuum action of the wand stimulates blood flow, cleans the pores, and removes skin debris. The increased blood flow to the skin's surface may encourage collagen formation thus firming and toning the skin.

History of Microdermabrasion

Microdermabrasion origins come from dermabrasion, which is actually thought to have originated in ancient times with the Egyptians who used alabaster and pumice to remove skin imperfections. The first modern dermabrasion technique evolved in the early part of the 20th century and utilized an abrasive disc that removed the top layers of skin.

By the mid 20th century, dermabrasion was performed using a rotating wire brush with anesthesia. This form of dermabrasion removed the epidermis and the upper part of the dermis for the improvement of scarring. By the mid 1980s, microdermabrasion was being performed in Italy using small inert aluminum oxide crystals to abrade the skin with the original patients being burn victims.

By 1986, other European markets had introduced the technology which was immediately adopted by physician for exfoliation. From 1990 to 1992, ten different types of microdermabrasion machines were available.

In 1994 Mattioli Engineering partnered with one of the Italian designed machines and started working toward meeting the FDA requirements for the U.S. market. In December 1996 the FDA issued the first clearance letter for microdermabrasion machines. By January 1997, the first machine was being marketed in the U.S.

There are a variety of different microdermabrasion systems available today. These include both the traditional crystal systems and the newer crystal free systems.

Crystal microdermabrasion systems employ a basic closed loop vacuum system. The clean crystals are forced onto the skin through one tube and vacuumed up through a second tube depositing the used crystals into a waste container. Controlling both the flow of crystals and the vacuum

General Warnings & Precautions

Warnings

1. Do not autoclave the console. Exposure to extreme heat will damage internal mechanisms.
2. Do not immerse the console in any solution.
3. Do not attempt to service the DermaSweep® console or remove the cover. There are no serviceable parts. Return system to DermaSweep for service.
4. Equipment not for use in the presence of flammable anesthetic mixture with air or with oxygen nitrous oxide.
5. Never operate the system with a damaged power cable.

Precautions

1. Before each use, inspect the DermaSweep® console and accessories for proper operation.
2. DermaSweep equipment is intended for use by professionals who are well versed in skin exfoliation.
3. Review “Care and Cleaning Instructions” section of this manual. Proper care and cleaning of the wands, tips, and tubing, is important to keep them clean and effective.
4. Hearing protection is suggested if the system is used in a confined room.

Indications and Contra Indications

Indications

- Sun– damaged skin
- Superficial pigmentation / age spots
- Enlarged or oily pores, blackheads and white heads
- General exfoliation / rejuvenation
- Acne scars

Educating the client regarding the necessary number of treatments and realistic expectations is an important aspect of client satisfaction and perception of improvement.

Contra-Indications

- Active acne
- Accutane (taken within past 12 months)
- Viral lesions, herpes simplex (active), flat warts
- Uncontrolled diabetes
- Eczema, dermatitis
- Skin Cancer
- Vascular lesions
- Oral blood thinner
- Rosacea (unless treatment has been prescribed by physician)
- Tattoos-not effective
- Pregnancy

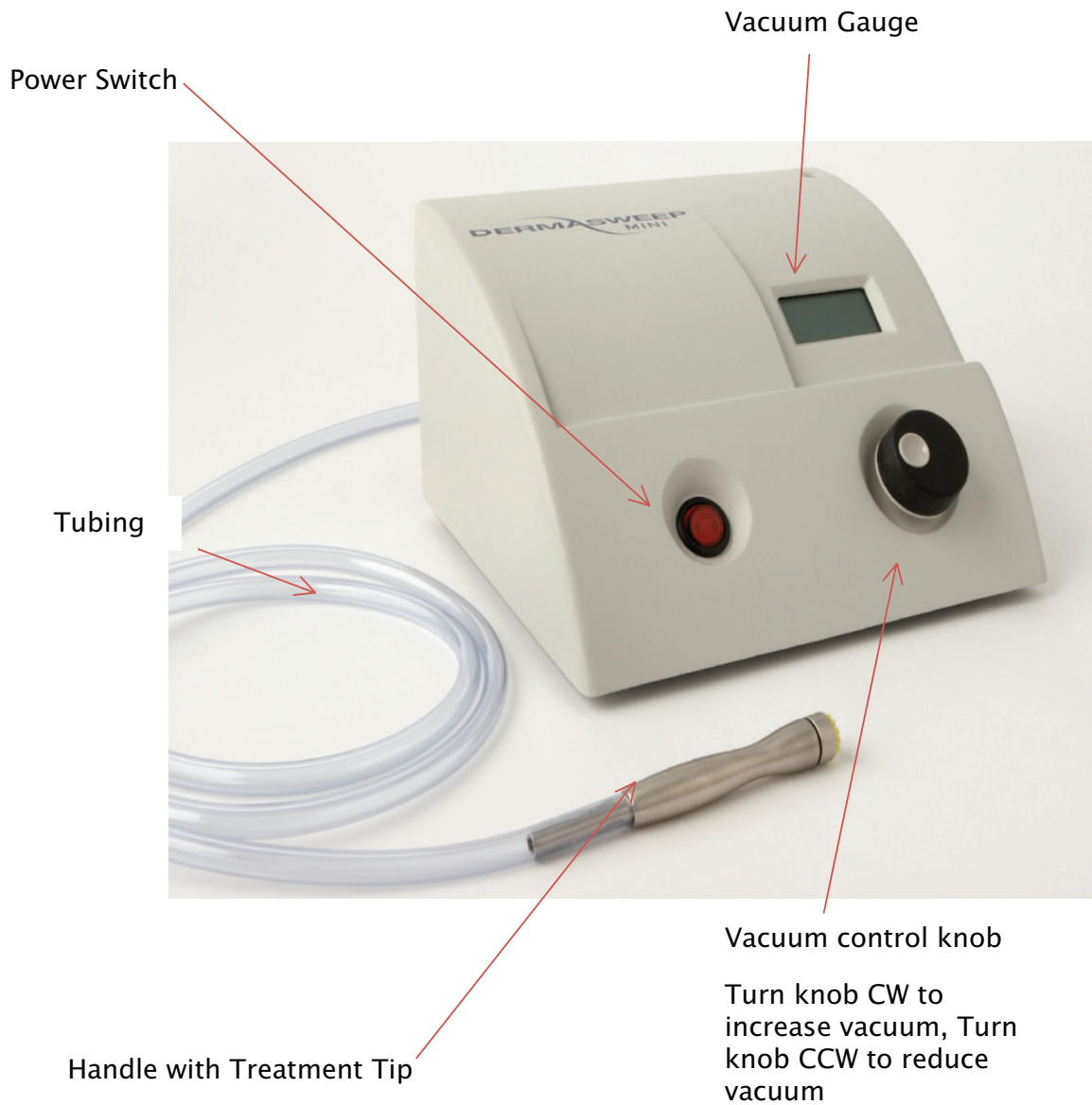
Side Effects and Complications

Mild erythema and increased sensitivity is expected, symptoms resolve within a few hours.

Petechiae may appear during or after the treatment. This usually indicates that the vacuum setting is too strong. This type of reaction will resolve within two days.

Capillaries may be more noticeable immediately after treatment and the reaction will generally resolve within a day or two.

DermaSweep MINI Console



DermaSweep MINI Components



Tube Connector

Filter Element

Power Entry Module and Fuse location

Technical Specifications

Dimensions: 8" (W) x 7" (D) x 5" (H)

Weight 8 lbs.

Power Source: Voltage 110V, 60Hz

Vacuum Intake: 25.5 in-Hg

Classification: Protected Class 1 Exempt

Line Supply: 110V, 60HZ

Fuses:

To replace the fuses, the power cord must be disconnected from console. The fuses are located in the Power Entry Module on the rear of the console. Use a small screw driver to open cover. Replace fuses if necessary.

Protective Grounding: DermaSweep Console uses a protective ground connected internally; use cord supplied or medical grade grounded cord to ensure integrity of this feature.

Repair Information: DermaSweep™ Console does not contain any parts that are serviceable except by DermaSweep or authorized service centers.

Environmental Conditions: Cooling: DO NOT COVER. Allow free ventilation of unit. DO NOT BLOCK VENTILATION

Stability: Use on Horizontal surfaces.

Accessories

Description

Product Image

DW1 Microdermabrasion handle



T01 Silk Used to polish the skin.

NO IMAGE

MT04 Black Fine



MT05 Green Medium



MT06 Yellow Medium /Coarse



MT08 Red Coarse



MT09 Gray Very Coarse



BT04 Fine Black nylon fiber



BT05 Medium



BT06 Medium /Coarse



BT08 Coarse



Accessories

Description

Product Image

Wand handle cleaning brush
Use to clean inside the DermaSweep handle.



Nylon tip cleaning brush
Used to clean treatment tips. *Never use a wire cleaning brush on the DS bristles. Keratin does not "built up or stick like glue" to the nylon, therefore it's not necessary to scrub DS tips with a wire brush.*



Stainless steel soaking tray



Enzymatic soaking detergent
Clean bristle treatment tips and handle prior to sterilization



Hospital grade disinfectant
Used to sterilize the DermaSweep Bristled treatment tips and handle.



Filter element
Collects debris



DS MINI Tube w/ adapter



System Set UP

Step 1

Insert hospital grade electrical cord



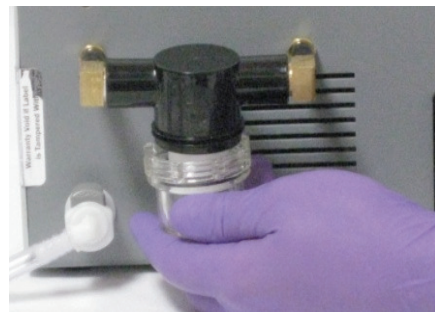
Step 2

Insert Filter element



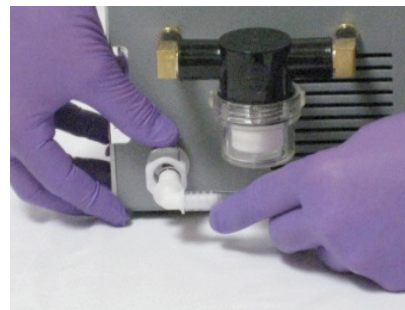
Step 3

Attach small filter jar



Step 4

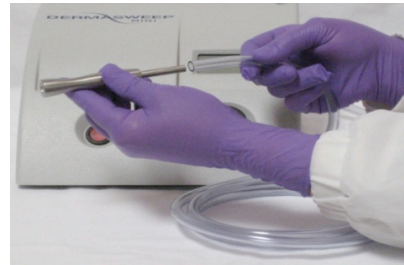
Insert tube with hose adapter in connector



System Set Up

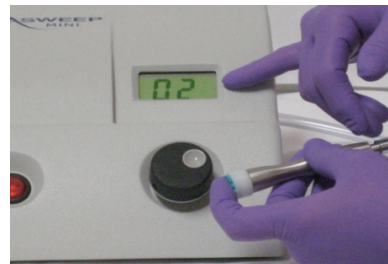
Step 5

Insert handle into tube,
select appropriate tip &
press power switch on

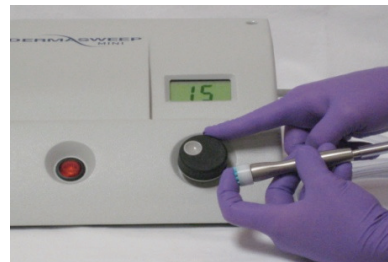


Step 6

Occlude tip, turn
vacuum knob CW
to set pressure



Turn the knob CW 3 to 4
complete rotations to
increase suction per
in.Hg.



Test Vacuum

Step 8

Test vacuum
on clients skin



Place tip on to skin, count to 1, using a light touch, lift tip and drag. Allow vacuum to lift skin up to the treatment tip. Use a sweeping motion.

Step 9

Begin treatment



The Treatment Tips

Let's talk about the Bristles?

Do Bristles matter?

Nothing matters more than the bristles and vacuum. The unique patent pending bristle tips are the key to this next generation MicroResurfacing system.

The bristles have superior MicroResurfacing properties. With 6 different levels of coarseness to select from provides the operator with a wide range of treatment options for optimal results.

Even more impressive the bristles prevent the build up of keratin on the tip, a problem associated with diamond tip particle free systems. Keratin does not attach to DermaSweep's bristle treatment tips enabling consistent and more efficacious results .

More importantly, patients/clients are seeing a noticeable skin improvement with fewer treatments as well as increased efficacy as compared to other systems.



Why Bristles Work?

Why Bristles Work?

DermaSweep Bristle tips have been designed to allow for airflow throughout the bristle. This unique quality causes the skin to be gently drawn into the bristle, which results in a more effective exfoliation that most patients find less irritating to the skin.

Additionally, this airflow design allows the vacuum pressure to be used in a safe yet increasingly effective manner. This more efficient use of the vacuum enhances results by effecting deeper layers of skin.

With multiple bristle tips to choose from you are now able to provide a customize resurfacing treatment depending on skin type, desired level of exfoliation and desired results.

DermaSweep® MINI Facial & Body Tips

Conversion from Mesh to Micron



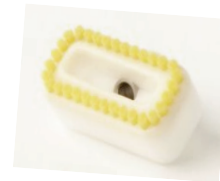
Black Fine Nylon Crimped - Mesh
Converts to 100 Micron



Green Medium - Polyester
Converts to 150 Micron



Yellow Med/coarse - Nylon Crimped
Converts to 150+ Micron



Red Coarse – Polypropylene
Converts to 200 Micron



Gray Very Abrasive - Nylon Crimped
Converts to 250+ Micron

Basic Microdermabrasion Protocol

Use basic treatment parameters to treat the following skin conditions:

Sun– damaged skin

Superficial pigmentation / age spots

Enlarged or oily pores, blackheads and white heads

General exfoliation / rejuvenation

Treatment should go in the following manner for 6 sessions:

The first 3 treatments should be done in 14 day intervals. The next 3 treatments should be done in 21 day intervals. Maintenance treatments should be done once every 6 weeks.

Clients need to comply with a maintenance program to achieve full results

The 4 Steps to Client Preparation:

1. Drape hair and clothing
2. Apply a small amount of cleansing liquid to skin with fingertips. Work into a lather and rinse thoroughly with a pre-moistened warm towel or tepid 4x4 gauze pads.
3. Set the vacuum between 16 to 24 in-Hg using the GREEN medium tip.
4. Perform a test site on the underside of the patients arm before proceeding.

Basic Microdermabrasion Protocol

There are two techniques:

Painting Motion and Eraser Motion

1. Painting- For most of the face, neck and chest, the painting technique works the best with multiple passes. Literally guide the treatment tip as you would a paintbrush allowing the vacuum suction to lift the skin up onto the bristle. You do not push down.

2. Eraser motion- An eraser motion can be used for all areas that need to be worked harder. The eraser motion is achieved by keeping the tip occluded to the skin at all times while moving the tip back and forth along the treatment area still allowing the vacuum to be the source of pressure.

Again, you do not push down. Allow the vacuum to do the work.

Treatment Zones

Divide the face into zones:

- Zone A- Forehead (below the hairline and above the eyebrows)
- Zone B- Eye Area (Treat this area last)
- Zone C- Mid Face (nose, cheeks to upper lip)
- Zone D- Lower Lip to Lower Jaw (mandible)
- Zone E- Neck and Décolleté

Basic Microdermabrasion Protocol

Zone A- The Forehead

Begin the first treatment conservatively and observe the effect by sight. Using the medium treatment tip and a vacuum setting between 20-27 in-hg (higher vacuum may be needed in Zone A), begin going from brows to hairline vertically. Go over the area repeatedly to achieve desired depth of exfoliation. Repeat the pattern horizontally.

Zone B- The Delicate Eye Area

TREAT THIS AREA LAST. Use the silk or fine treatment tip with no vacuum.

Zone C- Mid Face

Begin on the side of the face with vertical passes and cross with horizontal passes. Go over area repeatedly to achieve desired depth of exfoliation. Move down to the nose working the contours and around the creases on the side of the mouth. Work the upper lip area moving horizontally from the corner of the mouth over to encompass the smile lines, make sure skin is kept taut. To treat vertical wrinkles use vertical passes in conjunction with horizontal passes.

Zone D- Lower Lip to Lower Jaw

Work the lower lip and lower jaw with vertical and horizontal passes.

AFTER TREATING ENTIRE FACE, CHANGE TIP FROM MEDIUM, TO THE SILK TREATMENT TIP AND REPEAT THE ABOVE PROTOCOL.

Post Treatment

Apply cool compresses for 3 – 5 min

Apply CosMedic Post Peel Soothing Mask

Remove mask with cool compress

Apply barrier repair after an aggressive treatment

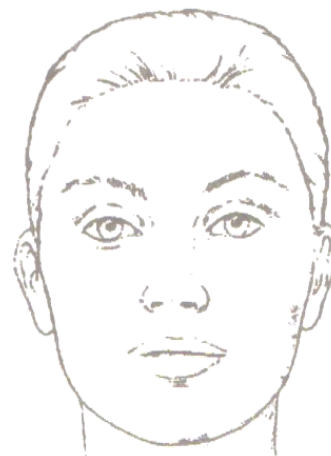
Apply Green Tea Moisturizer after a light treatment

Apply appropriate Skin Secure SPF 30 Light or Medium tint

Tracking Form

Step 1 Dry DermaSweep using the Mini	
Cleanse skin with anti bacterial cleanser. Allow skin to dry.	
Cheeks / Upper Lip / Midface - <i>Suggested vacuum setting 15 - 27</i> Treatment Tip: Vacuum setting:	
Lower Lip to Lower Jaw - Suggested <i>vacuum setting 15-27</i> Treatment Tip: Vacuum setting:	
Nose - Turn vacuum up - suggested <i>vacuum setting 20-27</i> Treatment Tip: Vacuum setting:	
Forehead - Turn vacuum up - suggested <i>setting 20-27</i> Treatment Tip: Vacuum setting:	
Eye Area - Turn vacuum down - <i>suggested vacuum setting 8-12</i> Treatment Tip: Vacuum setting:	
Neck - Suggested Vacuum setting 12-15 Treatment Tip: Vacuum setting:	

Post peel products used: <input type="checkbox"/> Barrier Repair <input type="checkbox"/> GREEN TEA MOISTURIZER <input type="checkbox"/> Tinted SPF 30 <input type="checkbox"/> Other -----
Home care instructions & skincare products given: <input type="checkbox"/> Barrier Repair <input type="checkbox"/> GREEN TEA MOIST <input type="checkbox"/> Tinted SPF 30 <input type="checkbox"/> Light <input type="checkbox"/> Medium <input type="checkbox"/> Gentle Foaming Cleanser <input type="checkbox"/> Alpha Cleanser <input type="checkbox"/> GREEN TEA CLEANSER <input type="checkbox"/> Other ----
RX given today:
Signature:



Post Microdermabrasion Home Care

For the first 2 days after microdermabrasion, discontinue using the following products: Alpha hydroxyl acids, Retin A, masks, scrubs, facial waxing products, and any other exfoliating products or treatment. If you do not have irritation by the third, you may begin using this product.

Avoid direct sun exposure and tanning salons. Use a sunscreen SPF 30 or higher.

A cold compress may relieve any irritation, sunburn or wind burn sensation.

Use make-up as desired.

For the first 2 days after microdermabrasion, use the following (AM & PM):

Cleanser: Gentle Foaming Cleanser

Moisturizer: Green Tea Moisturizer

Beginning day 3 after microdermabrasion, use the following products:

Cleanser (AM & PM):

Alternate between Gentle cleanser & Green Tea cleanser

Moisturizer (as needed):

___ Green Tea Moisturizer

Sunscreen (several times per day):

___ Skin Secure SPF 30

Notes:

Cleaning & Sterilization

Wand & Tips

Immediately after each use the wand and bristle tips should be soaked in enzymatic detergent solution for 15 minutes.

Enzymatic solution is used to loosen the protein and prevent protein build up.

Wand Handle: After soaking in enzymatic solution apply a drop of cleanser (anti bacterial) to the inside of the wand. Take pipe cleaner type brush and clean inside wand handle. Rinse wand with hot running water. Handle is now ready for sterilization.

Bristle Tip: After soaking in enzymatic solution apply a drop of anti bacterial cleanser to the treatment tip. Take pipe cleaner type brush and clean inside Tip, using SOFT NYLON instrument cleaning brush (NOT WIRE) apply a drop of cleanser to Tip and GENTLY scrub Bristles. Rinse with hot running water. Tip is now ready for sterilization.

Sterilization / Disinfecting

The wand and bristle tips are now ready to be placed in hospital grade disinfectant for 10 minutes or autoclave / steamed sterilization. Allow handle and tips time to dry after cold sterilization.

Steamed sterilization should always be used if the surface of the skin may be penetrated. If the wand is sterilization in an unwrapped tray the “flash” cycle may be used. This is between 3 – 5 minutes at a minimum temperature of 1320 C (2700 F) in a steam autoclave.

Warranty

The DermaSweep has a 1 Year warranty for parts and labor. Including shipping and handling to the original registered purchaser for 1 year. This warranty is void if the factory determines that the machine has been operated not in compliance with the operation manual or by using other than DermaSweep products consumables products. The warranty does not cover: Consumable items on DermaSweep order form. Damage causes by natural disasters, including flood, fire, wind and earthquake. Parts external to the chassis and disposables Damaged caused by improper use, abuse, tampering or dropping. Damage caused by incompatible voltage. Limitation of Liability concerning DermaSweep® MicroResurfacing systems. DermaSweep – is not liable for indirect or consequential damage of any kind, including but not limited to loss of business and revenue or any financial loss out of or in connection with the sales and installation performance or failure of use, of said product. DermaSweep products will not be liable for damage caused by authorized or unauthorized use by licensed or unlicensed personnel, or those without proper training in use of said unit for treatments beyond the scope of the machine.

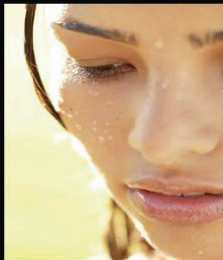
By purchasing and / or registering this unit DermaSweep you the purchaser of said product are accepting this Warranty and Limitation of Liability Agreement as written in this manual.

DermaSweep Serial # _____ Date of Purchase: _____
Purchasers Name _____
Purchaser Signature _____
Purchaser Address _____

Telephone Number _____
Email Address _____
Signature _____

DermaSweep, Inc.
3715 Atherton Road, Suite Two, Rocklin, California 95765
Phone 916-632-9134 Fax 916-630-9125
info@dermasweep.com
US FDA Registration Number: 3007035827 Patents Pending Worldwide

Sweep Away The Signs of Aging.



© 2007 DermaSweep ®. All Rights Reserved. Patent Pending.

DermaSweep, Inc.

3715 Atherton Road, Suite Two, Rocklin, California 95765 ph. 916-632-9134 fax 916-630-9125

US FDA Registration Number: 3007035827 Patents Pending Worldwide

ERROR: undefined
OFFENDING COMMAND:

STACK: