

# SANIJET®

PIPELESS WHIRLPOOL BATH



## Spa Bath Owner's Manual

Signature Collection

Designer Collection "Elite"

Designer Collection "Essential"

**TO BE REMOVED FOR USE BY THE OCCUPANT**

# SANIJET®

## PIPELESS WHIRLPOOL BATH

Dear Customer,

Thank you for purchasing a SANIJET® Pipeless Whirlpool Bath. By selecting a SANIJET® pipeless system, we believe that you have chosen the safest, most dependable and luxurious whirlpool bath available. This manual will help you learn how to install, operate and maintain your new pipeless whirlpool bath.

Before proceeding any further, please take a few minutes to complete the warranty registration card enclosed in your Owner's packet and submit it to us at the address provided on the form.

Your SANIJET® Pipeless Whirlpool Bath has been designed to provide you with safe and soothing hydromassage and to serve as a hygienic bathing appliance. As you read along, you will become familiar with the features of your specific whirlpool bath model. Please keep this manual after your initial reading for future reference.

Sincerely,  
SANIJET®

# Table of Contents

Letter From Sanijet.....	02
Important Safety Instructions .....	04
Pipeless Whirlpool Bath Operating Instructions .....	05
Command Pad Functions: Single Bather Spa Baths , 3-Zone .....	06
Command Pad Functions: Single Bather Spa Baths , 2-Zone .....	07
Command Pad Functions: Two-Person Spa Baths , 3-Zone .....	08
Command Pad Functions: Two-Person Spa Baths , 2-Zone.....	09
Command Pad Functions: Designer “Essential ” Spa Bath Command Pad .....	10
Pipeless Whirlpool Bath Installation Instructions .....	11
Electrical Requirements .....	12
Typical Installations.....	13
Plumbing .....	14
SANIJET Pure Pipeless Disinfection Protocol .....	15
Warranty-Residential .....	16
Warranty-Commercial .....	17
Customer Service .....	Back Cover

# Important Safety Instructions

Instructions pertaining to a risk of Fire, Electric shock or injury to persons.

## SAVE THESE INSTRUCTIONS

### WARNING:

When using this unit, basic precautions should always be followed, including the following:

**1 READ AND FOLLOW ALL INSTRUCTIONS.**

**2 WARNING:** Risk of accidental injury or drowning: Children should not use a hydromassage bathtub without adult supervision.

**3 WARNING:** To avoid injury, exercise care when entering or exiting the hydromassage bathtub.

**4 WARNING:** Risk of electric shock: Do not permit electric appliances (such as a hair dryer, lamp, telephone, radio, or television) to be within 5 ft (1.5m) of this hydromassage bathtub.

**5 DANGER:** RISK OF ELECTRIC SHOCK: This unit should be grounded. Connect only to a dedicated 15 amp. circuit that is protected by a Ground Fault Circuit Interrupter (GFCI). A GFCI should be provided by the electrician and should be tested on a routine basis. To test the GFCI, push the test button. The GFCI should interrupt power. Push the reset button. Power should be restored. If the GFCI fails to operate in this manner, there is a ground fault, indicating the possibility of electrical shock. DO NOT USE THE UNIT. Have the problem corrected by a qualified service representative or an electrician before using.

**6 WARNING:** Risk of hyperthermia and possible drowning: Water temperature in excess of 104 ° F (38° C) may be injurious to your health. Check and adjust water temperature before use.

**7 WARNING:** Do not operate this unit without the complete jet assembly installed.

**8** Use the SANIJET Pipeless Whirlpool Bath only for its intended purpose: a fill and drain, hydromassage appliance for human bathing. Do not use attachments not recommended by the manufacturer.

**9** Never drop or insert any object into any opening.

**10** Follow closely all applicable Federal , Provincial/State and local building codes and regulations.

# Pipeless Whirlpool Bath

## Operating Instructions

Your SANIJET Pipeless Whirlpool Bath is designed to be filled with fresh water then drained after each use. Certification by NSF International ensures that your Pipeless System can be effectively cleaned and disinfected by simply following SANIJET's Pure Disinfection Protocol on Page 15.

### COMMAND PAD DESCRIPTION

A detailed description of your system's command pad operation can be found on the following pages:

- Single Bather Signature and Designer "Elite" Spa Baths (Pages 6-7)
- Two-Person Signature and Designer "Elite" Spa Baths (Pages 8-9)
- Designer "Essential" Spa Baths (Page 10)

### WATER LEVEL

Close the drain and fill the bath until the water level is at least 2" above the jets. Operating the system without water may damage the jet assemblies. Never attempt to fill above the bottom of the overflow.

### BATH ADDITIVES

Bath additives (including oil based products) can be used in a SANIJET Pipeless Whirlpool Bath, since their residue can be easily cleaned. CAUTION: Use only low foaming additives.

### CLEANING YOUR SANIJET PIPELESS WHIRLPOOL BATH:

WARNING: Unless thoroughly cleaned after each use, bath residue will buildup within the system and on the surface area of any whirlpool bath, which can promote the growth of bacteria. To maintain your SANIJET® Pipeless Whirlpool Bath at a maximum level of hygiene, thoroughly clean the tub shell and jets after each use with a nonabrasive antibacterial cleaner, rinse and dry. NEVER use abrasive household cleaners on any SANIJET® Pipeless Whirlpool Bath. If you use an anti-skid rubber mat in your whirlpool bath, remove it after every use to properly clean the tub surface and to avoid harm to the surface finish.

IMPORTANT! TOTAL DISINFECTION REQUIRES TWO DISTINCT STEPS: Cleaning and Disinfection.

### PREPARATION & CLEANING

- a. Drain the bathing well of all water.
- b. Remove and disassemble the jet assemblies and place them in the sink or other basin suitable for cleaning.
- c. Use a non-abrasive antibacterial cleaner to clean the bathing vessel, jet cases, drain stopper and overflow mechanism-rinse with fresh water.

### DISINFECTION

- a. Spray the surface area of the jet assemblies and bathing vessel until thoroughly coated with an EPA-registered disinfectant.
- b. Allow to set for the required disinfection contact period (refer to manufacturer's specifications) then rinse surfaces with fresh water.

### REASSEMBLY

- a. Dry the jet assemblies and bathing vessel.
- b. Reinstall the jet assemblies by aligning with jet case at 10 o'clock position. Maintain even pressure and rotate jet assemblies clockwise to lock them in place.

**NSF CERTIFICATION:** NSF International confirmed that SANIJET's Pipeless system can be completely cleaned and disinfected, even if system cleaning has been neglected.

### REPAIRS

**TUB SURFACE** Minor scratches can be easily removed. Immerse 600-grit wet/dry sandpaper in water and lightly sand the area. Repeat sanding with 1000-grit wet/dry sandpaper and water. To restore the surface gloss, use Gel-Gloss® (found at most hardware stores). If Gel-Gloss is not available use automotive rubbing compound followed by an application of automotive paste wax. Major scratches and gouges will require professional refinishing. Contact SANIJET's customer service department for specific instructions.

NOTICE: NO OTHER ITEMS ARE OWNER SERVICEABLE.

**SUNLIGHT EXPOSURE:** In order to prevent discoloration of the acrylic finish, limit the exposure of the bath to direct sunlight.

### TROUBLESHOOTING

If system will not operate: Check the remote GFCI circuit breaker to make sure it is in the ON position. Reset the GFCI if necessary.

### NOTICE

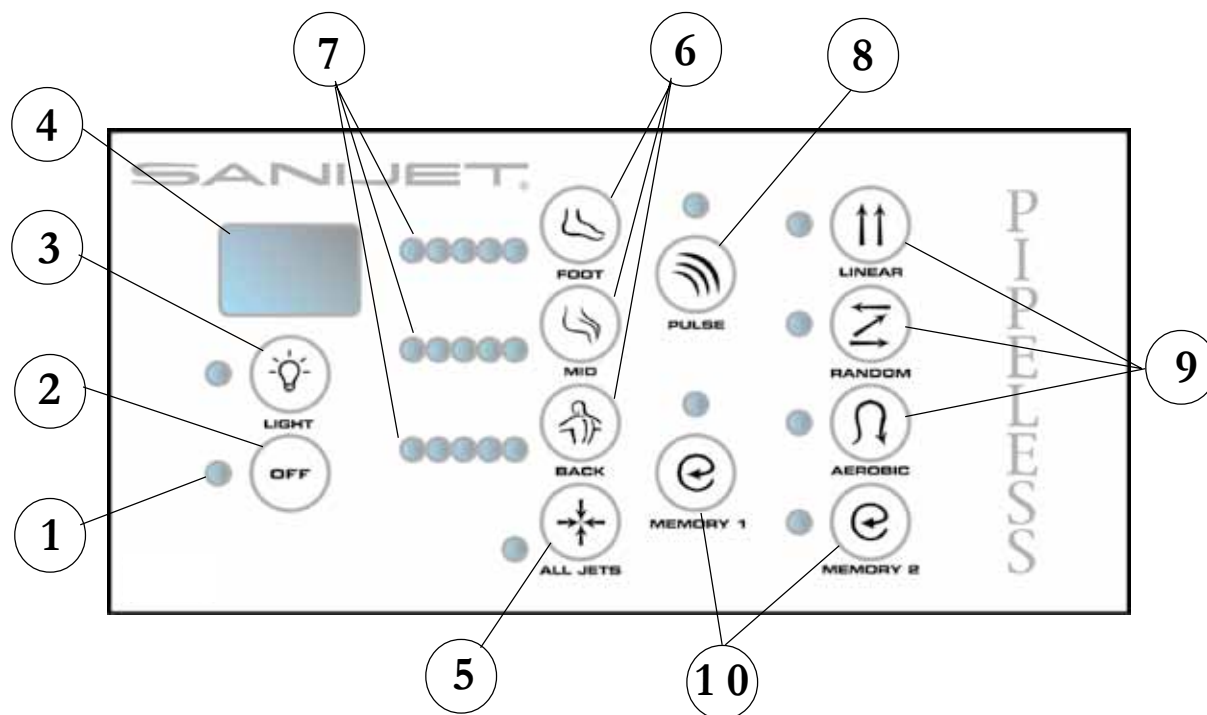
Abnormal operation of the whirlpool bath functions may be the result of a power outage or poor quality power service in your area. The circuit breaker, which supplies electrical power to the whirlpool bath, should be reset prior to placing a service call.

### WATER LEAKAGE

Call a plumber to determine the source of the leak. If the leak is from the pipeless whirlpool system, contact SANIJET's customer service department for specific instructions.

# Single Bather Spa Baths

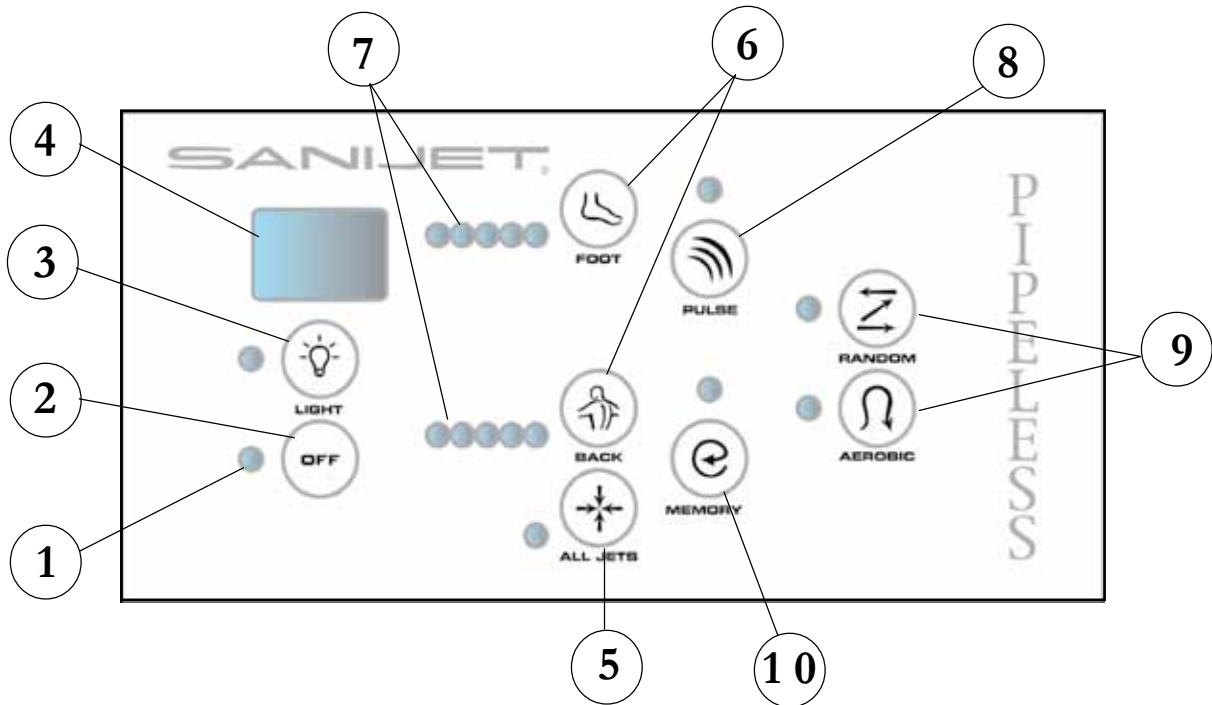
## SIGNATURE AND DESIGNER "ELITE" 3-ZONE COMMAND PAD



- 1 **STANDBY Mode LED Indicator** Indicates the system is ready to operate.
- 2 **OFF Button** Turns the jets OFF and returns the system to STANDBY.
- 3 **LIGHT Button** Used to control the optional mood light.
  - Press the "Light" button to turn on the mood light
  - The light displays 7 vivid colors and 2 sequencing settings.
  - To change the light color, press the "Light" button to turn it off and after one second press it again to turn it on.
  - The color sequence is as follows: Bright White, Aqua Blue, Soothing Blue, Ocean Blue, Majestic Gold, Shamrock Green, Fiery Red, Chameleon Mode, Party Mode
  - In the event that the light is left turned on, it will automatically turn off after 2 hours continuous operation.
- 4 **Display** Displays the time remaining for system operation (the timer counts down from 20 minutes and is reset when leaving the STANDBY Mode).
- 5 **ALL JETS Button** Simultaneously controls all jet pairs at either High or Low speed.
- 6 **FOOT, MID, BACK Buttons** Use to individually control the water flow of the jets. Each jet pair can be set at either HI or LO speed or turned OFF. When any of these buttons are pressed for less than one second, the system will automatically increase or decrease the water flow of the selected jet pair.
- 7 **Jet Flow LED Indicators** Displays the water flow of the FOOT, MID, and BACK jets.
- 8 **PULSE Button** Pulsates the water flow and simultaneously allows individual jet pair control via the Foot, Mid, Back buttons. This function allows all jets, any two jet pairs or any single jet pair to pulse, while the non-pulsing jet pairs can be set at HI or LO speed or turned OFF.
- 9 **Pre-Programmed Massage Modes** All three-zone models have three pre-programmed massage modes: LINEAR, RANDOM and AEROBIC.
  - LINEAR** Massage Button: Activates a massage that begins with the back and moves down the body to the feet.
  - RANDOM** Massage Button: Creates water pulses in patterns of limitless variation.
  - AEROBIC** Massage Button: Activates a slowly changing massage where all jets simultaneously alternate between pulses and constant flow.
- 10 **Personal Memory Modes** The Personal Memory modes allow you to store and recall the settings of the command pad via a single button (the state of the mood light is not included). All 3-Zone models can store and recall two personalized memory settings via the Memory 1 and Memory 2 buttons.
  - MEMORY 1 Button** To store your MEMORY 1 setting, press and hold the MEMORY 1 button until the MEMORY 1 LED Indicator turns ON to acknowledge the setting has been stored. To recall MEMORY 1 setting, press the MEMORY 1 button for less than 1 second.
  - MEMORY 2 Button** To store your MEMORY 2 setting, press and hold the MEMORY 2 button until the MEMORY 2 LED Indicator turns ON to acknowledge the setting has been stored. To recall the MEMORY 2 setting, press the MEMORY 2 button for less than 1 second.

# Single Bather Spa Baths

## SIGNATURE AND DESIGNER "ELITE" 2-ZONE COMMAND PAD



- 1 **STANDBY Mode LED Indicator** Indicates the system is ready to operate.
- 2 **OFF Button** Turns the jets OFF and returns the system to STANDBY.
- 3 **LIGHT Button** Used to control the optional mood light.
  - Press the "Light" button to turn on the mood light
  - The light displays 7 vivid colors and 2 sequencing settings.
  - To change the light color, press the "Light" button to turn it off and after one second press it again to turn it on.
  - The color sequence is as follows: Bright White, Aqua Blue, Soothing Blue, Ocean Blue, Majestic Gold, Shamrock Green, Fiery Red, Chameleon Mode, Party Mode
  - In the event that the light is left turned on, it will automatically turn off after 2 hours continuous operation.
- 4 **Display** Displays the time remaining for system operation (the timer counts down from 20 minutes and is reset when leaving the STANDBY Mode).
- 5 **ALL JETS Button** Simultaneously controls all jet pairs at either High or Low speed.
- 6 **FOOT AND BACK Buttons** Used to individually control the water flow of the jets. Each jet pair can be set at either High or Low speed or turned OFF. When either of the buttons is pressed for less than one second, the system will automatically increase or decrease the water flow of the selected jet pair.
- 7 **Jet Flow LED Indicators** Displays the water flow of the Foot and Back jets.
- 8 **PULSE Button** Pulsates the water flow and simultaneously allows individual jet pair control via the FOOT and BACK buttons. This function allows all jets or either pair to pulse, while the non-pulsing jet pair can be set at High or Low speed or turned OFF.
- 9 **Pre-Programmed Massage Modes** All two-zone models have two pre-programmed massage modes: RANDOM and AEROBIC.

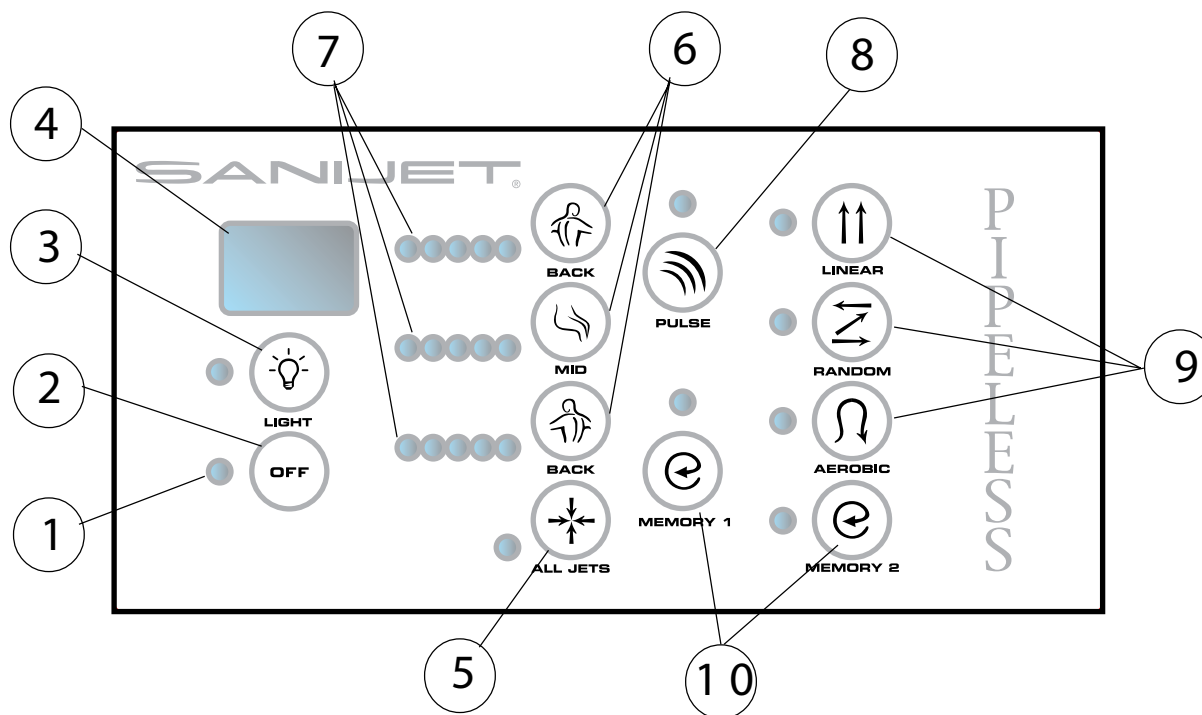
**RANDOM** Massage Button: Creates water pulses in patterns of limitless variation.

**AEROBIC** Massage Button: Activates a slowly changing massage that increases the water flow from LOW to HIGH and then decreases the water flow from HIGH to LOW.
- 10 **Personal Memory Modes** The Personal Memory mode allows you to store and recall the settings of the command pad via a single button (the state of the mood light is not included). All control models can store and recall a personalized memory setting via the Memory button.

**MEMORY Button** To store your MEMORY setting, press and hold the MEMORY button until the MEMORY LED Indicator turns ON to acknowledge the setting has been stored. To recall the MEMORY setting, press the MEMORY button for less than 1 second.

# Two-Person Spa Baths

## SIGNATURE AND DESIGNER "ELITE" 3-ZONE COMMAND PAD

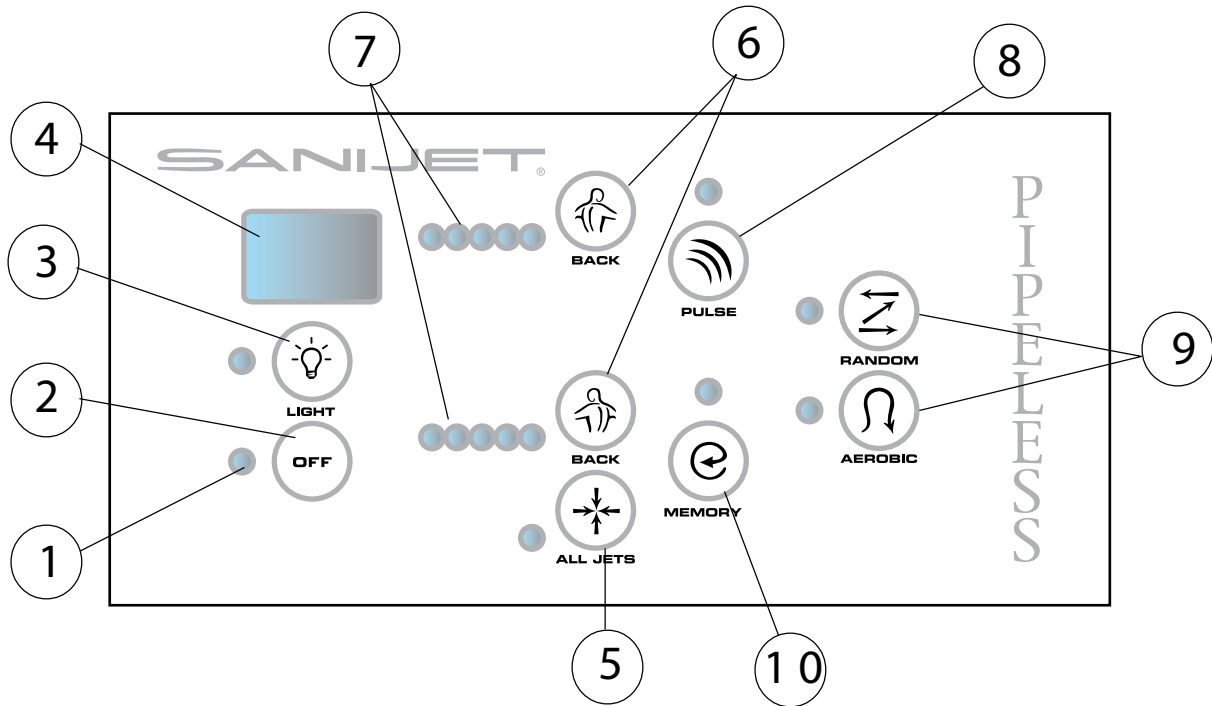


- 1 **STANDBY Mode LED Indicator** Indicates the system is ready to operate.
- 2 **OFF Button** Turns the jets OFF and returns the system to STANDBY.
- 3 **LIGHT Button** Used to control the optional mood light.
  - Press the "Light" button to turn on the mood light
  - The light displays 7 vivid colors and 2 sequencing settings.
  - To change the light color, press the "Light" button to turn it off and after one second press it again to turn it on.
  - The color sequence is as follows: Bright White, Aqua Blue, Soothing Blue, Ocean Blue, Majestic Gold, Shamrock Green, Fiery Red, Chameleon Mode, Party Mode
  - In the event that the light is left turned on, it will automatically turn off after 2 hours continuous operation.
- 4 **Display** Displays the time remaining for system operation (the timer counts down from 20 minutes and is reset when leaving the STANDBY Mode).
- 5 **ALL JETS Button** Simultaneously controls all jet pairs at either High or Low speed.
- 6 **BACK, MID, BACK Buttons** Use to individually control the water flow of the jets. Each jet pair can be set at either High or Low speed or turned OFF. When any of these buttons are pressed for less than one second, the system will automatically increase or decrease the water flow of the selected jet pair.
- 7 **Jet Flow LED Indicators** Displays the water flow of the BACK, MID, BACK jets.
- 8 **PULSE Button** Pulsates the water flow and simultaneously allows individual jet pair control via the BACK, MID, BACK buttons. This function allows all jets, any two jet pairs or any single jet pair to pulse, while the non-pulsing jet pairs can be set at High or Low speed or turned OFF.
- 9 **Pre-Programmed Massage Modes** All three-zone models have three pre-programmed massage modes: LINEAR, RANDOM and AEROBIC.
  - LINEAR** Massage Button: Activates a massage that begins with the back and moves down the body.
  - RANDOM** Massage Button: Creates water pulses in patterns of limitless variation.
  - AEROBIC** Massage Button: Activates a slowly changing massage where all jets simultaneously alternate between pulses and constant flow.
- 10 **Personal Memory Modes** The Personal Memory modes allow you to store and recall the settings of the command pad via a single button (the state of the mood light is not included). All 3-Zone models can store and recall two personalized memory settings via the Memory 1 and Memory 2 buttons.
  - MEMORY 1 Button** To store your MEMORY 1 setting, press and hold the MEMORY 1 button until the MEMORY 1 LED Indicator turns ON to acknowledge the setting has been stored. To recall MEMORY 1 setting, press the MEMORY 1 button for less than 1 second.
  - MEMORY 2 Button** To store your MEMORY 2 setting, press and hold the MEMORY 2 button until the MEMORY 2 LED Indicator turns ON to acknowledge the setting has been stored. To recall the MEMORY 2 setting, press the MEMORY 2 button for less than 1 second.



# Two-Person Spa Baths

## SIGNATURE AND DESIGNER "ELITE" 2-ZONE COMMAND PAD



- 1 **STANDBY Mode LED Indicator** Indicates the system is ready to operate.
- 2 **OFF Button** Turns the jets OFF and returns the system to STANDBY.
- 3 **LIGHT Button** Used to control the optional mood light.
  - Press the "Light" button to turn on the mood light
  - The light displays 7 vivid colors and 2 sequencing settings.
  - To change the light color, press the "Light" button to turn it off and after one second press it again to turn it on.
  - The color sequence is as follows: Bright White, Aqua Blue, Soothing Blue, Ocean Blue, Majestic Gold, Shamrock Green, Fiery Red, Chameleon Mode, Party Mode
  - In the event that the light is left turned on, it will automatically turn off after 2 hours continuous operation.
- 4 **Display** Displays the time remaining for system operation (the timer counts down from 20 minutes and is reset when leaving the STANDBY Mode).
- 5 **ALL JETS Button** Simultaneously controls all jet pairs at either High or Low speed.
- 6 **BACK Buttons** Used to individually control the water flow of the BACK jets. Each jet pair can be set at either High or Low speed or turned OFF. When either of the buttons is pressed for less than one second, the system will automatically increase or decrease the water flow of the selected jet pair.
- 7 **Jet Flow LED Indicators** Displays the water flow of the BACK jets.
- 8 **PULSE Button** Pulsates the water flow and simultaneously allows individual jet pair control via the BACK buttons. This function allows all jets or either pair to pulse, while the non-pulsing jet pair can be set at High or Low speed or turned OFF.
- 9 **Pre-Programmed Massage Modes** All two-zone models have two pre-programmed massage modes: RANDOM and AEROBIC.
  - RANDOM** Massage Button: Creates water pulses in patterns of limitless variation.
  - AEROBIC** Massage Button: Activates a slowly changing massage that increases the water flow from LOW to HIGH and then decreases the water flow from HIGH to LOW.
- 10 **Personal Memory Modes** The Personal Memory mode allows you to store and recall the settings of the command pad via a single button (the state of the mood light is not included). All control models can store and recall a personalized memory setting via the Memory button.
  - MEMORY Button** To store your MEMORY setting, press and hold the MEMORY button until the MEMORY LED Indicator turns ON to acknowledge the setting has been stored. To recall the MEMORY setting, press the MEMORY button for less than 1 second.

## DESIGNER "ESSENTIAL" SPA BATH COMMAND PAD



Your "Essential" Whirlpool Bath provides spa-quality bathing delivered by Pipeless Jets for an invigorating, strong or soft, soothing experience... you choose.

### **HIGH | LOW | OFF**

Simply press the button on the command pad to turn on "All Jets" to their highest flow setting.

Press the button a second time to adjust "All Jets" to the low flow setting.

Press the button a third time to turn the system "Off."

### **20-MINUTE TIMER**

All Designer "Essential" Spa Baths are equipped with a 20-minute timer that will turn the system "Off" after 20 minutes of continuous operation.

# Pipeless Whirlpool Bath

## Installation Instructions

### WARNING

When using electrical products, basic precautions should always be followed, including the following:

- 1 **IMPORTANT: Read complete instructions before beginning installation.**
- 2 **DANGER: RISK OF ELECTRIC SHOCK.** Connect only to a dedicated 15 amp. circuit protected by a ground fault circuit interrupter. Grounding is required. This unit should be installed by a qualified service representative and grounded.
- 3 Each whirlpool bath arrives ready for installation and may include an optional drain/overflow kit.
- 4 Remove the bath from the carton and retain the shipping carton until satisfactory inspection of the product has been made. ONLY lift the bath by the shell or base.
- 5 To help prevent damage from shoes, tools, etc., to the bath unit's finish during installation, do not remove the protective sheet of plastic from inside the bath.
- 6 Immediately upon receipt, inspect the tub shell and operating system for any obvious damage BEFORE installing. Should inspection reveal any damage or defect in the finish, do not install the bath. SANIJET's responsibility for shipping damage ceases upon delivery of the product in good order to the carrier. Refer any claim for damage to the carrier. For definitions of warranty coverage and limitations, refer to the published warranty information on pages 16 and 17.
- 7 All bath units are factory tested for proper operation and watertight connections prior to shipping. **Note: Prior to installation, the bath must be filled with water and operated to check for leaks that may have resulted from shipping damage or mishandling.**
- 8 Each SANIJET Signature and Designer Collection model has an internal access panel and does not require an external access panel for service:
- 9 **CAUTION: RISK OF ELECTRIC SHOCK:** De-energize from electrical supply before servicing.

# Electrical Requirements

A 115 VAC, 15 AMP, 60 HZ., dedicated circuit connected to a Ground Fault Circuit Interrupter (GFCI) is required. The GFCI should be mounted for easy access in the event a manual reset is required, and should never be mounted underneath the tub. If the GFCI is located on a bathroom wall, it should be positioned such that it is not accessible by the tub's occupant.

## SERVICE LOOP REQUIRED

The electrical installation of the bath unit requires that an electrical Service Loop be provided. The Service Loop will allow the required electrical connections to be made to the junction box located on the side of the tub prior to installation. The Service Loop should be a minimum of 8 ft. long as measured from either end of the tub. The Service Loop should contain the electrical service (3 wire) and the required solid bonding ground wire. Each unit is manufactured with a safe, convenient OFF button located on the command pad. A remote switch or timer is not necessary.

## ELECTRICAL CONNECTIONS / DANGER: RISK OF ELECTRIC SHOCK

Connect only to a dedicated 15 Amp. circuit protected by a Ground Fault Circuit Interrupter. All electrical connections should be performed by a licensed electrician. The tub obtains electrical service via an internal power cord and is left unterminated in the electrical junction box located on the side of the tub. The junction box also provides an external lug connector to accommodate a #8 AWG solid bonding conductor (ground wire). **See Illustration #1.**

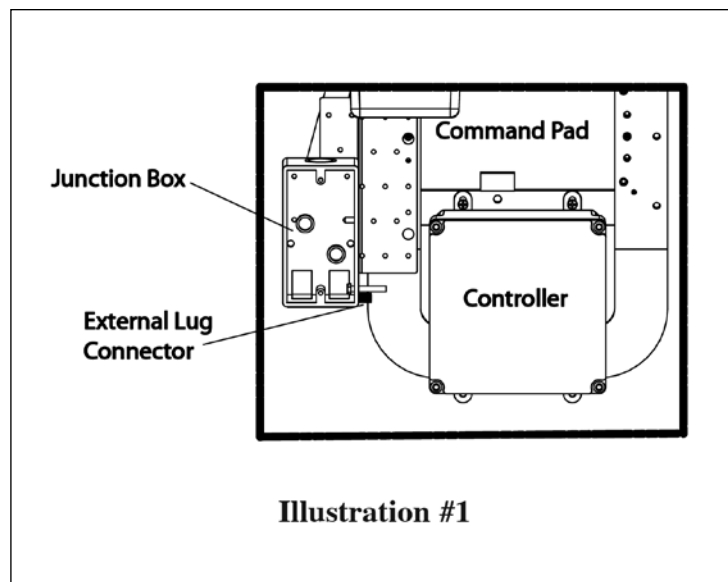
The required electrical connections to the tub are as follows:

- 1 The electrical service is hardwire connected (3 wires) to the tub's power cord, ground wire and optional light cord, which are all located inside the provided junction box. These connections need to use approved connectors and be solidly secured.
- 2 Installation of a #8 AWG solid bonding connector (ground wire) from the lug connector attached to the junction box to earth ground. The #8 AWG ground wire is not provided with the bath unit.

## MOUNTING ACCESSORIES

When mounting valves, spouts, handles, rails, or grab bars, verify the location of any system wiring or components located on the back of the unit to prevent accidental damage from drilling mounting holes. Verify that the hot and cold water supply lines and the electrical outlet are located where there is ample room for proper connections **BEFORE** setting the unit in place.

When mounting any fittings on the unit, drill holes from the finished surface using a fine-tooth or abrasive grit cutting edge.



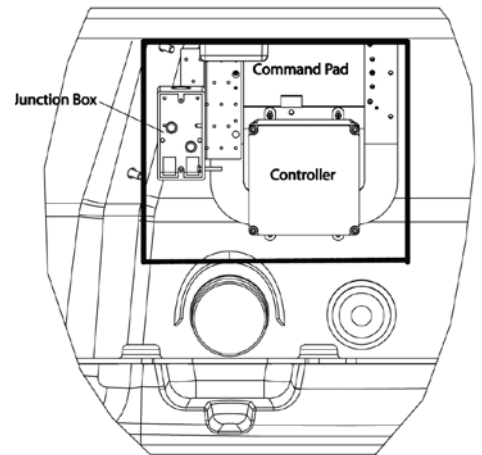
# Typical Installations

The entire bottom surface of the tub base must be supported. To accomplish this, a bed of mortar or low shrinkage plaster can be applied under the tub base at the time of final setting. The amount of material used should be sufficient only to level the bath unit and not to raise it. Level the bath unit along the top edge of the rim when the setting bed is applied. Allow the setting material to set completely before applying weight to the bath. This procedure is essential to ensure the bath unit has proper support and drainage. The rim of the bath unit is not designed to support weight. If finish material is to overlap or contact the bath unit, the added weight of the material must be fully self-supporting.

To obtain detailed dimensional, floor loading, capacity, and required system component clearance information for your particular model, please contact SANIJET toll-free at 877-934-0477.

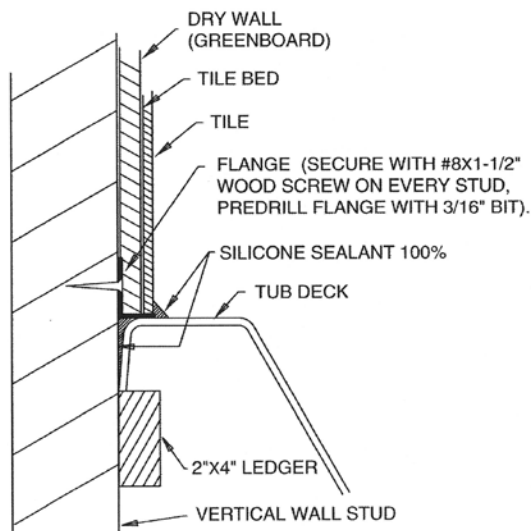
## SERVICE ACCESS

The system does not require an external access panel for service. Access to the jet motors, the control electronics and the electrical service connections is accomplished from inside the tub. The command pad, located on the side of the tub, provides an internal panel through which the control electronics and electrical service connection can be accessed for service. An unobstructed clearance area of 2 inches is required to the left, right, bottom and rear of the box indicated at right in order to allow service access. This area must not contain any ledger boards, supports or vertical studs.

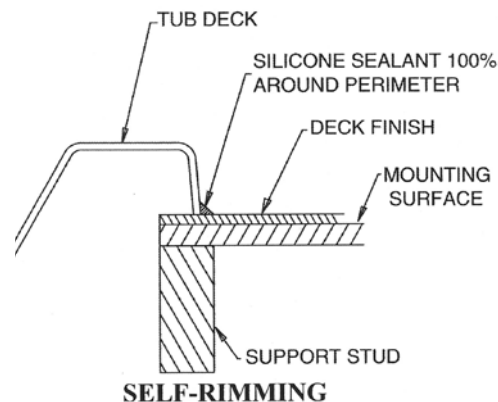


## FRAMING AND SUPPORT

The drain extends below the bottom of the bath and requires a cutout in the floor. The floor structure beneath the bath must be able to support the total weight of the bath, water, and bather. The Minimum Floor Structural Requirement recommended is 100 pounds per square foot.



**3-WALL INSTALLATION**



# Plumbing

All SANIJET® Pipeless Whirlpool Bath units are factory tested for proper operation and watertight connections prior to shipping. Prior to installation, the bath must be filled with water and operated to check for leaks that may have resulted from shipping damage or mishandling. If leaks are detected, notify SANIJET's customer service department. Do not install the unit.

## **DRAIN INFORMATION**

A drain/overflow assembly must be installed on the bath, water tested, and connected to the sanitary system of the house. After opening the box that contains the drain / overflow assembly (optional accessory), inspect for damage and verify it has the proper finish. Follow the installation instructions provided with the drain/overflow assembly kit.

NOTE: Watertight installation of the drain is the installer's responsibility and is not covered under the product's warranty.

## **WATER SUPPLY**

Consult local authorities for plumbing code requirements in your area.

IMPORTANT: Proper installation of faucetry and waste/overflow, as well as compliance with local codes are the responsibility of the installer. SANIJET® does not warrant connections of water supply fittings and piping, faucetry, or waste/overflow systems. Nor is it responsible for damage to the bath that occurs during installation.

CAUTION: A nonflammable protective barrier must be placed between soldering work and the bath unit to prevent damage to the bath.

## **SHOWER INFORMATION**

SANIJET® is not responsible for damage to the bath unit or for water damage, which might occur due to improper shower installation or use.

## **CLEANING THE BATH UNIT AFTER FINAL INSTALLATION**

To avoid dulling and scratching the surface of the bath, never use abrasive cleaners. A mild liquid detergent and warm water will clean soiled surfaces. Remove spilled plaster with a wood or plastic edge. Metal tools will scratch the surface. Spots left by plaster or grout can be removed, if lightly rubbed with detergent on a damp cloth or sponge.

Paint, tar, or other difficult stains can be removed with paint thinner, turpentine, or isopropyl alcohol (rubbing alcohol). To avoid discoloration, cleaners containing petroleum distillates must not remain on surfaces. NEVER use lacquer thinner or chlorinated solvents.

Minor scratches can be easily removed. Immerse 600-grit wet/dry sandpaper in water and lightly sand the area. Repeat sanding with 1000-grit wet/dry sandpaper and water. To restore the surface gloss, use Gel-Gloss® (found at most hardware stores). If that is not available use automotive rubbing compound followed by an application of automotive paste wax. Major scratches and gouges, which penetrate the acrylic surface, will require refinishing. Contact SANIJET's customer service department for specific instructions.

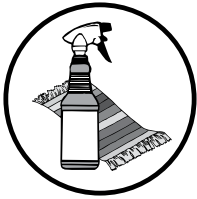
## **TROUBLESHOOTING**

If system will not operate: Check the remote GFCI to make sure it is in the ON position. Reset GFCI if necessary.

NOTICE: Abnormal operation of the whirlpool bath functions may be the result of a power outage or poor quality power service in your area. The circuit breaker, which supplies electrical power to the whirlpool bath, should be reset prior to placing a service call.

# SANIJET Pure Pipeless Disinfection Protocol

## IMPORTANT! TOTAL DISINFECTION REQUIRES TWO DISTINCT STEPS



Remove residue with thorough and effective cleaning.



Disinfection: Apply an EPA registered disinfectant, covering 100% of all surface areas for the required contact time, to kill bacteria, viruses and fungi.

### 1) PREPARATION & CLEANING

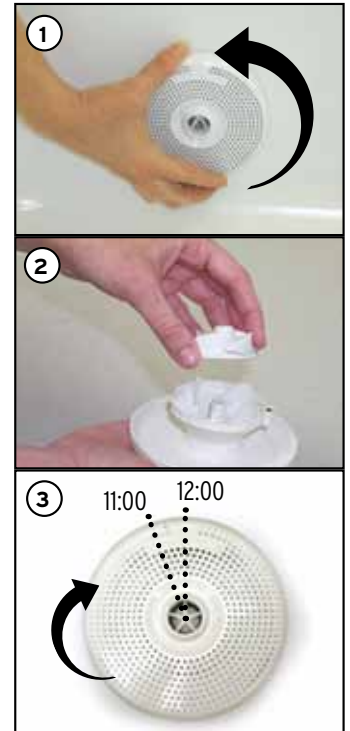
- a. Drain the bathing well of all water.
- b. Rotate the jet assembly to remove from jet case.
- d. Disassemble the jet assemblies (3 pieces each) and place them in the sink. Use a non-abrasive antibacterial cleaner to remove any visible residue - rinse with fresh water.
- e. Use a non-abrasive antibacterial cleaner to clean the bathing vessel, jet cases, drain stopper and overflow mechanism-rinse with fresh water.

### 2) DISINFECTION

- a. Spray the surface area of the jet assemblies and bathing vessel until thoroughly coated with an EPA-registered disinfectant.
- b. Allow to set for the required disinfection contact period (refer to manufacturer's specifications) then rinse surfaces with fresh water.

### 3) REASSEMBLE

- a. Dry the jet assemblies and bathing vessel.
- b. Reassemble and replace jets by aligning the 11 o'clock position.



#### IMPORTANT

- Always refer to your state and local guidelines for cleaning requirements.
- NEVER USE abrasive cleaners on any surface area.
- After each use, disinfect the system with the recommended disinfection procedures for maximum sanitation.
- BEFORE USE check the jet assembly is properly installed in the case motor assembly.
- BEFORE USE make sure that water is filled to at least 1" above the jets for proper operation.
- DO NOT attempt to activate the jet system without water present.

#### ADDITIONAL NOTES

- SANIJET Pipeless™ Hydromassage system cleaning and disinfection takes approximately 5 minutes when using Dispatch® Hospital Cleaner Disinfectant with Bleach.
- The SANIJET Pipeless Jet System does not require a "fill and drain cycle" during disinfection, for improved water conservation.
- For applications requiring quick cleaning between treatments, we recommend a second set of "clean" jet assemblies for quick replacement.

#### RECOMMENDED CLEANER / DISINFECTANT

SANIJET recommends the use of DISPATCH® Hospital Cleaner Disinfectant with Bleach - EPA Reg. No. 56392-7; EST. No. 62801-MI-001. Kills bacteria and viruses in 1 minute and tuberculosis in 30 seconds. Available in 32 oz trigger spray and 64 oz refill bottle.

# LIMITED RESIDENTIAL WARRANTY

## Pipeless Spa Baths

**PRODUCTS COVERED:** Spa baths manufactured by SANIJET and put to residential use.

**PERSONS COVERED:** The original purchaser for residential use (Customer).

**WARRANTY PERIOD:** Signature and Designer Elite Models: Five (5) years on the tub shell and two (2) years on all other parts and components. Designer Essential Models: Three (3) years on the tub shell and one (1) year on all other parts and components. The warranty period begins on the date of original purchase for use or two (2) months after the product leaves SANIJET's facility, whichever comes first. SANIJET may require Customer to document original purchase and provide serial number(s).

**SCOPE OF COVERAGE:** This warranty only covers problems reported to SANIJET during the warranty period. Coverage is SUBJECT TO the exclusions below. If a **tub shell** manifests a defect or fails to properly perform under ordinary use within the warranty period, SANIJET will repair or replace it at SANIJET's election, but shall have no responsibility with respect to removal, reinstallation or transport of the tub shell. If **any other part or component** manifests a defect or fails to properly perform under ordinary use during the warranty period, SANIJET will provide repair or replacement parts or components at its election. As a condition to warranty service, SANIJET may require Customer to return defective/malfunctioning parts and may charge Customer for the repair or replacement parts or components subject to a full refund upon receipt of the return parts and verification of the problem.

**SHIPPING:** SANIJET will pay freight on a least-cost basis to ship repair/replacement parts to destinations within the continental United States.

**EXCLUSIONS:** This warranty does NOT cover a) metallic plated hardware, light bulbs or fading from exposure to direct sunlight; b) failure, damage or defect caused by any of the following after the product leaves SANIJET's factory: mishandling, abuse, misuse, neglect, accident or natural disaster, normal wear and use that does not affect the product's function; failure to maintain the product as recommended by SANIJET (See Owner's/Installation manual); or c) any part that has been altered or tampered with, including but not limited to alteration or tampering with any labeling.

**MAKING CLAIMS:** Report problems to SANIJET's customer service department.

Telephone: 877-934-0477 or 972-745-2283 Fax: 214-352-0348 E-mail: info@sanijet.com

**DEALER WARRANTIES:** No dealer or distributor has any authority to bind SANIJET to any other warranty or any change or addition to this warranty.

**SOLE REMEDY / LIMITATION OF DAMAGES:** THE REMEDY PROVIDED ABOVE UNDER "SCOPE OF COVERAGE" IS CUSTOMER'S EXCLUSIVE REMEDY FOR ANY DEFECT OR MALFUNCTION OF THE PRODUCT. To the fullest extent allowed by law, SANIJET disclaims and excludes liability for consequential and incidental damages including, but not limited to, loss of use, lost rentals, lost profits, loss of business reputation, out of pocket expenses, damage to property other than the warranted product, mental anguish and punitive damages. **Some states limit or do not allow the exclusion or limitation of incidental or consequential damages, so some or all of these limitations may not apply to you.**

**STATE LAW RIGHTS:** **This warranty gives you specific legal rights, and you may also have other rights which vary from state to state.** THE DURATION OF ANY IMPLIED WARRANTIES UNDER STATE LAW, INCLUDING THE IMPLIED WARRANTIES OF MERCHANTABILITY AND FITNESS FOR A PARTICULAR PURPOSE, IS LIMITED TO THE WARRANTY PERIOD DESCRIBED ABOVE. **Some states do not allow limitations on how long an implied warranty lasts, so this limitation may not apply to you.**



# LIMITED COMMERCIAL WARRANTY

## Pipeless Spa Baths

**PRODUCTS COVERED:** Spa baths manufactured by SANIJET and put to commercial use.

**PERSONS COVERED:** The original purchaser for commercial use (Customer).

**WARRANTY PERIOD:** One (1) year on all parts and components beginning on the date of original purchase for use or two (2) months after the product leaves Sanijet's facility, whichever comes first. Sanijet may require Customer to document the date of original purchase and provide serial number(s) of the product(s).

**SCOPE OF COVERAGE:** This warranty only covers problems reported to SANIJET during the warranty period. Coverage is SUBJECT TO the exclusions below. If a **tub shell** manifests a defect or fails to properly perform under ordinary use within the warranty period, SANIJET will repair or replace it at SANIJET's election, but shall have no responsibility with respect to removal, reinstallation or transport of the tub shell. If **any other part or component** manifests a defect or fails to properly perform under ordinary use during the warranty period, SANIJET will provide repair or replacement parts or components at its election. As a condition to warranty service, SANIJET may require Customer to return defective/malfunctioning parts and may charge Customer for the repair or replacement parts or components subject to a full refund upon receipt of the return parts and verification of the problem. THE REMEDY PROVIDED IN THIS SECTION IS CUSTOMER'S EXCLUSIVE REMEDY FOR ANY DEFECT OR MALFUNCTION OF THE PRODUCT.

**SHIPPING:** SANIJET will pay freight on a least-cost basis to ship repair/replacement parts to destinations within the continental United States.

**EXCLUSIONS:** This warranty does NOT cover a) metallic plated hardware, light bulbs or fading from exposure to direct sunlight; b) failure, damage or defect caused by any of the following after the product leaves SANIJET's factory: mishandling, abuse, misuse, neglect, accident or natural disaster, normal wear and use that does not affect the product's function; failure to maintain the product as recommended by SANIJET (See Owner's/Installation manual); or c) any part that has been altered or tampered with, including but not limited to alteration or tampering with any labeling.

**MAKING CLAIMS:** Report problems to SANIJET's customer service department.

Telephone: 877-934-0477 or 972-745-2283 Fax: 214-352-0348 E-mail: info@sanijet.com

**DEALER WARRANTIES:** No dealer or distributor has any authority to bind SANIJET to any other warranty or any change or addition to this warranty.

**SOLE REMEDY / LIMITATION OF DAMAGES:** THE REMEDY PROVIDED ABOVE UNDER "SCOPE OF COVERAGE" IS CUSTOMER'S EXCLUSIVE REMEDY FOR ANY DEFECT OR MALFUNCTION OF THE PRODUCT. TO the fullest extent allowed by law, SANIJET disclaims and excludes liability for consequential and incidental damages including, but not limited to, loss of use, lost rentals, lost profits, loss of business reputation, out of pocket expenses, damage to property other than the warranted product, mental anguish and punitive damages. **Some states limit or do not allow the exclusion or limitation of incidental or consequential damages, so some or all of these limitations may not apply to you.**

**STATE LAW RIGHTS:** **This warranty gives you specific legal rights, and you may also have other rights which vary from state to state.** THE DURATION OF ANY IMPLIED WARRANTIES UNDER STATE LAW, INCLUDING THE IMPLIED WARRANTIES OF MERCHANTABILITY AND FITNESS FOR A PARTICULAR PURPOSE, IS LIMITED TO THE WARRANTY PERIOD DESCRIBED ABOVE. **Some states do not allow limitations on how long an implied warranty lasts, so this limitation may not apply to you.**

**Product Specifications Are Subject To Change Without Notice.**

SANIJET® has obtained applicable code listings generally available on a national basis for products of this type. It is the responsibility of the installer/owner to determine specific local code compliance prior to installation of the product. SANIJET® makes no representation or warranty regarding, and will not be responsible for, any code compliance.



**NSF Protocol P182  
Pipeless Hydrotherapy Jets**



Listed by IAPMO Research and Testing, Inc.  
as meeting the requirements of the Uniform  
Swimming Pool, Spa, and Hot Tub Code.



Standard for Hydromassage Bathtubs, UL 1795  
Standard for Hydromassage Bathtub Appliances  
CSA C22.2

**For customer service please contact:**

**SANIJET® Customer Service Department**  
Toll Free: 877-934-0477 Toll Free Fax: 214-352-0348 E-mail: [info@sanijet.com](mailto:info@sanijet.com)

**SANIJET®**

6200 MAPLE AVENUE DALLAS, TEXAS 75235  
877.934.0477 SANIJET.COM