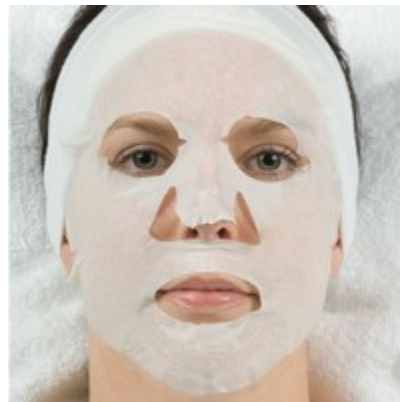

Caviar Collagen Mask

Description

This mask, which contains 5% caviar, provides a rich source of vitamins from roe extract (caviar) plus marine DNA, a key element vital to skin cell regeneration. This nourishing mask is also formulated with collagen, quince extract for hydration, CoQ10 for boosting skin repair and regeneration and reducing free radical damage, and sodium hyaluronate for increasing hydration and decreasing the appearance of fine lines and wrinkles.



Skin Type: Suitable for all skin types, especially aging skin.

Benefits:

- ❑ Helps regenerate skin cells.
- ❑ Hydrates the skin.
- ❑ Helps boost skin repair.
- ❑ Decreases the appearance of fine lines and wrinkles.

Ingredients

Salmon Egg Extract, Soluble Collagen, Vegetable Glycerin, Purified Water, Co Q10, Quince Extract, Jojoba Oil, Hamamelis Virginian (Witch Hazel) Extract, Bio-PGA, Allantoin, D-Alpha Tocopheral Acetate (Vitamin E).



Allantoin	A botanical extract that is healing and soothing. An excellent anti-irritant (temporary) that helps heal damaged skin by stimulating new tissue growth.
Bio-PGA	Has a moisturizing effect on the skin.
Co Q10	An antioxidant. It helps neutralize harmful free radicals.
Jojoba Oil	A moisturizer and emollient. It reduces transepidermal water loss without completely blocking the transportation of water vapor and gases, providing the skin with suppleness and softness.
Purified Water	Water that is mechanically filter or processed so that it clean and free of any contaminants.
Quince Extract	An astringent and tonic - good for dry skin.
Salmon Egg Extract	Fatty compound - used in emollients. Rich source of vitamins.
Soluble Collagen	Great hydration potential. Can bind and retain many times its weight in water.
Vegetable Glycerin	A solvent, humectant, and emollient. It absorbs moisture from the air.

Vitamin E	An important oil-soluble antioxidant and free-radical scavenger when applied topically. It is also has photoprotectant capabilities and helps protect the cellular membrane from free-radical damage. It also serves a preservative function due to its ability to protect against oxidation.
Witch Hazel Extract	Has anti-inflammatory and wound healing properties. Often used for its anti-itching, softening, and emollient properties.

Usage Instructions

1. Apply mask on a thoroughly cleansed face.
2. Leave on 15 to 20 minutes.
3. Remove mask and finish with a toner and moisturizer appropriate for your client's skin type.

SKU #
HM4554