
Rosemary Mask

Description

Rosemary has cell regenerating powers, wound healing properties, and a stimulating effect on blood circulation, cellular respiration, deep cleansing and detoxification. Rosemary is combined with green tea extract, vitamin C, and wheat germ oil that give the skin brightness, suppleness, and radiance.

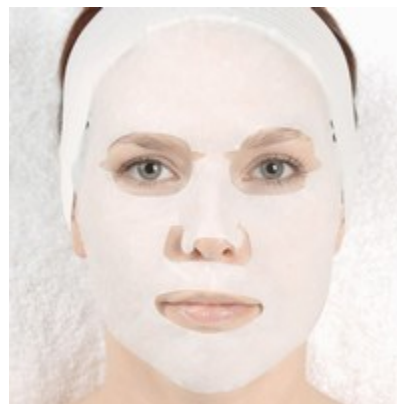
Skin Type: Suitable for all skin types.
Hyperpigmentation, aging skin.

Benefits:

- ❑ Cleanses, helps to improve circulation, and locks in moisture.
- ❑ Contributes to a brighter, more radiant appearance.

Ingredients

Aqua, Glycerin, Marine Collagen, Rosmarinus Officinalis (Rosemary) Leaf Extract, Green Tea Extract, PEG-7 Glyceryl Cocoate, Hamamelis Virginiana (Witch Hazel) Extract, Trehalose, Hydrogenated Wheat Germ Oil, Ascorbic Acid, Hyaluronic Acid, Phenoxyethanol, Rosmarinus Officinalis (Rosemary) Leaf Oil, Carbomer, Triethanolamine, PEG-40 Hydrogenated Castor Oil, Bisabolol, Fragrance



Aqua	Water
Ascorbic Acid	A well known antioxidant that is popular in anti-aging products.
Bisabolol	A botanical that has anti-inflammatory and soothing properties.
Carbomer	Thickening and suspending agent; emulsion stabilizer.
Fragrance	Provides an aroma to the product.
Glycerin	A solvent, humectant, and emollient. It absorbs moisture from the air.
Green Tea Extract	Powerful antioxidant due to its catechin content. Also has antibacterial, anti-inflammatory, and stimulating properties.
Hyaluronic Acid	A substance that occurs naturally in the dermis. It is a natural moisturizer with excellent water-binding capabilities. When applied to the skin, it forms a film similar to the way it holds water in the intracellular matrix. The ability to hold water provides smoothness, improving the skin's appearance.
Hydrogenated Wheat Germ Oil	Skin conditioning agent.
Marine Collagen	Derived from the substance found on fish scales. Helps diminish the signs of aging and decrease the negative effects of toxins.

PEG-7 Glyceryl Cocoate	A self-emulsifying emollient for aqueous formulations.
PEG-40 Hydrogenated Castor Oil	A hydrophilic emulsifier, stabilizer, antigellant, and lubricant.
Phenoxyethanol	Broad range preservative with fungicidal, bactericidal, insecticidal, and germicidal properties.
Rosemary Leaf Extract	Has astringent, toning, tonic, refreshing, stimulating, deodorant, antiseptic, reactivating, antibacterial, antimicrobial, softening, and invigorating properties. Helps improve blood circulation and aids in skin regeneration.
Rosemary Leaf Oil	Has antiseptic properties. Helps mask odors and adds a fragrance. Beneficial for acne, dermatitis, and eczema. Helps increase epidermal cell turnover.
Trehalose	A humectant and moisturizer. It helps bind water in the skin and increase the skin's moisture content. It is a naturally occurring plant sugar.
Triethanolamine	An emulsifier and pH adjuster.
Witch Hazel Extract	Has anti-inflammatory and wound healing properties. Often used for its anti-itching, softening, and emollient properties.

Usage Instructions

1. Open packet, unfold mask, and place on cleansed face.
2. Leave on for 15 to 20 minutes.
3. Remove mask and discard.
4. Finish with toner and moisturizer appropriate for client's skin type.

SKU #
HM4576