



INSTRUCTIONS FOR USE

AMPHIBIA

TREATMENT BED



Gharieni GmbH
Gutenbergstraße 40
D - 47443 Moers

Tel.: +49(0)2841/88300-163
Fax: +49(0)2841/88300-999
Service Hotline: +49(0)2841/88300-40

E-mail: service@gharieni.de
Internet: www.gharieni.de

Contents of this manual

SAFETY SYMBOLS USED	4
1.0 SAFETY INSTRUCTIONS	4
1.1 INTENDED USE	5
1.2 AUTHORISED OPERATORS – OPERATING COMPANY'S DUTY	5
1.3 DANGER OF ELECTRICAL ENERGY	5
1.4 SAFETY DEVICES	6
1.5 DANGERS DUE TO MECHANICAL ENERGY	6
1.6 MAINTENANCE AND SAFETY CHECK	7
1.7 DISPOSAL	7
1.8 DANGER DUE TO DRIVES OVERHEATING	7
2.0 GENERAL	7
2.1 BEFORE FIRST USE TRANSPORT/UNPACKING	8
2.2 TRANSPORT AIDS	8
2.3 INSTALLATION - CONNECTION	9
2.3.1 SPACE REQUIRED	10
2.4 PARTS ENCLOSED	10
2.5 POWER SUPPLY	10
3.0 THE AMPHIBIA BED	10
3.1 AMPHIBIA WITHOUT WATER CUSHIONS	10
3.2 HAND SWITCH	11
3.3 MEMORY FUNCTION	11
4.0 SETTINGS	12
4.1 HEIGHT	12
4.2 BACKREST	12
4.3 HEADREST	12
4.4 ARMRESTS	13
4.5 SEAT INCLINATION	13
4.6 LEGREST	13
4.7 EXTENDING RUNNERS	14
5.0 ELECTRIC TRIPLE AIRBACK WITH HEATING AND LIGHT	15
5.1 FILLING THE WATER CUSHIONS	15
5.2 HEATING	17
5.3 SWITCHING ON/OFF	17

5.4	SETTING THE TEMPERATURE OF THE UPPER HEATING MAT (HZO//HMU).....	18
5.5	SETTING THE WATER CUSHION TEMPERATURE (HZU///HML).....	18
5.6	DISPLAYING AND SETTING THE DURATION OF HEATING.....	18
5.7	ELECTRIC AIRBACK	19
5.8	LIGHTING	19
5.9	COMPRESSED AIR FOR ACCESSORIES (AYURVEDA MAT).....	20
6.0	OPTIONS	20
6.1	FOOT SWITCH.....	20
6.2	PROTECTIVE COVER WITH INSPECTION OPENINGS	20
6.3	AYURVEDA LINER	21
7.0	CLEANING AND MAINTENANCE	22
7.1	UPHOLSTERY - CLEANING / DISINFECTION.....	22
7.2	GUARANTEE PROVISIONS.....	22
7.3	THE IDENTIFICATION PLATE.....	23
8.0	DRIVE FAILURES / REMEDIES	23
9.0	TECHNICAL SPECIFICATIONS.....	24
10.0	EG DECLARATION OF CONFORMITY	25
11.0	APPENDIX-1:.....	26

Safety symbols used

You will find the following safety instructions in this manual:



Caution! If this safety instruction is not observed, the user's safety is endangered or the device may be damaged!
Danger of electric current!



Danger of electric shock!



Danger of getting crushed!



Danger of falling!



Hints and tips for use!



Application part of type B



Do not dispose of this product as regular domestic waste at the end of its lifecycle, but hand it in to a collection site for recycling electronic and electrical devices. Do not remove this symbol from the product.

1.0 Safety instructions



Danger of electric current!

Make sure that the power outlet for the device is earthed properly and has the right voltage (230 V).

Check the cables at regular intervals and contact our Customer Service Department if damage is found.



It is absolutely vital that you read these instructions carefully and only use the unit as instructed here. This will protect both your own and your customers' safety.

Keep the manual available near the bed!

Note! If this safety instruction is not observed, the user's safety is endangered or the device may be damaged!



Sharp objects such as needles must be kept away from the water elements.



Only one person with a maximum weight of **160 kg** can sit or lie on the bed at any one time. The treatment bed must never be used by 2 or more people at the same time.

The upholstery forms an integral part of the bed.

The bed must not be used to transport people.



Conversions, changes and installing additional fittings not supplied by the manufacturer are not allowed. Any exceptions must be approved in writing by the manufacturer.

Using the bed otherwise than for its INTENDED USE will affect the guarantee and your warranty rights.

Intended use includes observing these operating instructions, all general instructions, safety instructions and other provisions.

Assembly activities, adjustments or repairs must only be made by authorised staff. Only use original spare parts when making repairs.

1.1 Intended use

The Gharieni MLW Amphibia is a versatile wellness treatment bed. It can be used for cosmetic treatments or full-body massages. When the right accessories are added, such as the oil-resistant protective cover, it is suitable for Ayurveda treatments.



Never use excessive oil as this might penetrate the inside of the bed.

This bed is suitable for people with a max. weight of 160 kg.

Customers must be allowed to sit on the seat only.

1.2 Authorised operators – operating company's duty



Authorised operators: the user, i.e. the operating company, must instruct the operators, must make the operating instructions available and must ensure that they have been read and understood.

Do not leave children unsupervised near the bed.

1.3 Danger of electrical energy



Dangers of electrical energy may occur due to:

- Improper maintenance work on the transformer, the use of NON-ORIGINAL PARTS on or near the transformer, any failure to pull the mains

plug for maintenance work, running the bed over the mains cord or a defective cord or cable.

- Maintenance work and safety checks must only be carried out by authorised professionals.
- Immediately stop using defective equipment and make sure that it cannot be used by unauthorised users again.
- Before starting to use the bed, check the cabling (no damage). The mains lead must not be run over nor overstretched during use.
- Interference with other electrical appliances can occur in certain situations.

Make sure that the power outlet for the device is earthed properly and has the right voltage (230 V).

1.4 Safety devices



Fuses, shielded cables and guards have been installed for personal safety. They must not be removed, modified or by-passed.

REMEDY ANY DEFECTS IMMEDIATELY OR HAVE THEM REMEDIED IMMEDIATELY!

1.5 Dangers due to mechanical energy



Beware: Risk of getting trapped! Always ensure that there are no objects or parts of the body under the backrest or under the leg rest (ill.1).



III. 1

Observe the warning instruction notices on the bed and never put your hands between moving parts.

Spline function:

All drives of this bed have a spline function. This means that the drives only exert a force for lifting and that the relevant parts are lowered by their own weight. This prevents parts of the body or objects being crushed under the backrest and/or the leg rest. However, the weight of the various parts of the bed is such that injury cannot be ruled out completely in spite of the spline function, and special care is called for here (ill.1).

1.6 Maintenance and safety check



The mains lead to the mains socket must be checked for damage at regular intervals and must be changed by our Customer Service Department (or an electrician) if damage is found.

Notify our Customer Service Department in case of faulty operation or if an unusual noise is heard.

IF THESE PROVISIONS ARE NOT OBSERVED, THERE IS A RISK OF YOUR GUARANTEE BEING INVALIDATED AND ALL LIABILITY BEING WAIVED.

Regularly check the water cushions for leaks.

To avoid algae and contamination, the water must be replaced at least once every 6 months and replaced by an anti-algae liquid (conditioner).

1.7 Disposal



These beds consist of metal, wood and plastic parts, electronic components and electric cables. The individual materials must be disposed of in accordance with the environmental and waste disposal regulations of the country of use.

If you have any queries as regards disposal, contact the local authorities responsible for waste disposal, your dealer or:

Gharieni GmbH
service@gharieni.de

Tel.: +49 (0)2841/88300-163
Fax: +49 (0)2841/88300-999
Service Hotline: +49 (0)2841/88300-40

1.8 Danger due to drives overheating



Do not use the adjusting motors for continuous periods of more than 2 minutes.

The maximum period of continuous activation of the adjusting motors = 2 minutes.

Minimum idle period after 2 minutes of activation = 18 minutes.

2.0 General

Product description:

The bed is intended to let customers sit or lie on it during a treatment. The bed can be continuously adjusted using 4 x 24-volt electric motors.

Function characteristics of the bed:

Height adjustment:	continuous, (electrical)
Backrest adjustment:	continuous, (electrical)
Inclination/leg adjustment:	continuous, (electrical)
Footrest adjustment:	continuous, (electrical)
Headrest adjustment:	continuous, (manual)
Armrests:	continuous, (manual)

2.1 Before first use - Transport/Unpacking



Before installing the bed, make sure that sufficient space has been planned for the bed so that it does not bump against any other objects when fully unfolded (see appendix on Space Requirements). The beds are delivered to customers on special pallets and in boxes in some countries. The bed is then fully horizontal and the upholstery is already in place.

As a rule, the bed is delivered by our own staff. If supplied by an external carrier, the following applies:



The bed is delivered on a special pallet in a box. Carefully open the top of the box. Do not use any sharp objects which might damage the upholstery. Do not lift the bed, but first remove the upper carton cover. You can then lift the sleeve up and put it aside.

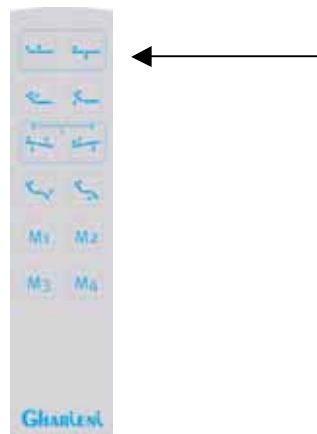
2.2 Transport aids



Do not hold the bed by its upper structure (headrest, backrest, armrests or leg rest) to lift it. If subjected to a force, these parts will give way (spline function).

You can use our special carrying aids (ill. 3) for better handling, following the instructions below:

To get the bed off the pallet, you must first raise it through approx. 8-10 cm; you will have to connect it to a wall outlet for this. Now press the relevant function key (first series of buttons on the hand switch, suspended from the side - see ill. 2).



III. 2

Now pull the mains plug from the socket again. Lift the inner of the two wooden shells until the bore holes for the four special carrying aids are visible (ill. 3). You can now screw in the carrying aids in pairs at the front and at the rear; the bed is ready to be transported. Ideally, four people should lift and position the bed in the location of your choice.



Caution: danger of injury due to heavy load. Weight of the bed: 125 kg (without water cushions).

If the floor is not perfectly flat, the stability of the bed may have to be adjusted to the floor surface by adjusting the setscrew.

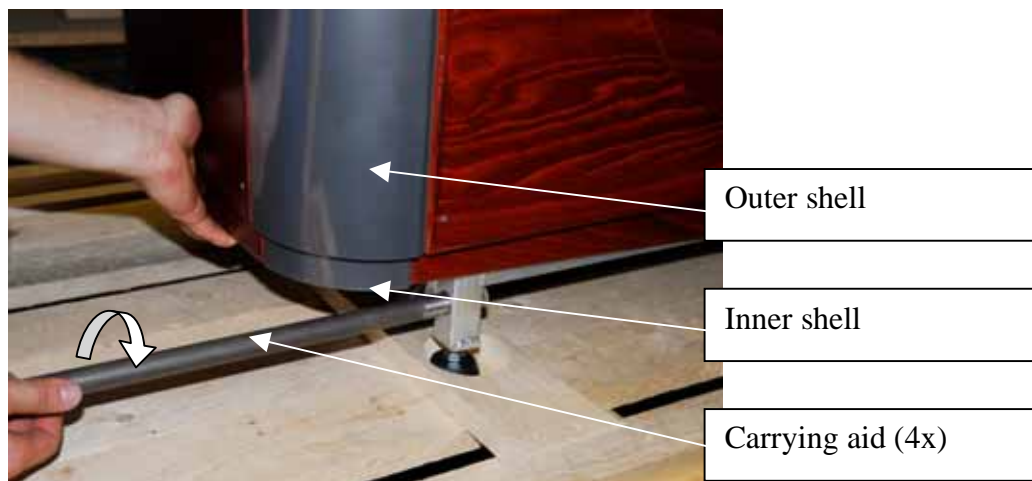
If you have found a suitable location with sufficient space (see appendix 1) for the bed, unscrew the carrying aids and store them in case you ever have to transport the bed again. The bed has already been fully fitted out with the upholstery.



Caution - collision: You must remove the carrying aids before using the bed.



Caution - collision of the inner shell with the outer shell: After removing the carrying aids you must push the inner shell of the bed down again, so that it rests on the steel structure of the base.



III. 3

2.3 Installation - connection



A wall socket must be nearby. The mains lead is approx. 250 cm long. Do not run the bed over the mains lead (danger of the lead being crushed, danger of electric shock) or the hand switch lead (danger of the lead being crushed, faulty operation).

Danger of tripping: Lay the mains lead so that no one can trip over it.



The mains lead and the hand switch lead must remain clear of moving parts to avoid the danger of their being crushed and/or electric shocks.

2.3.1 Space required

The space required is determined on the basis of the maximum expansion of the bed (length x width) plus a 50-cm margin around it to keep the bed accessible on all sides. **See appendix 1**

2.4 Parts enclosed

- 2 water cushions: 2x 15 litres (cubic capacity)
- 2 water cushions: 2x 7.5 litres (cubic capacity)
- One bottle (250 ml) of water bed conditioning agent
- Upholstery: (removable to be replaced by water cushions)
- Instructions for use

First check that all the parts are present and that none of them are visibly damaged.

2.5 Power supply

The power cord is fixed to the bed. To supply an electric current to the bed, plug the mains lead plug into a wall outlet.

Make sure that the wall outlet has the right voltage (230 V).

3.0 The Amphibia bed

The Amphibia bed can be used either with water or foam cushions (point 3.1). The treatment bed has four electric adjusting motors (see General instructions). The hand switch enables you to adjust the right height, inclination, backrest and leg rest positions quickly and comfortably. You can use the memory functions (M1; M2, M3, M4) to store and call up the 4 positions you use the most. You can always change and save them when required (see Memory function 3.2).

3.1 Amphibia without water cushions

First remove the upper heating to use the Amphibia without water cushions. The plug-and-socket connections of the heating under the water cushions must be disconnected for this. The upper heating can then be removed from the pockets in the water cushions. The water cushions can now be removed one by one. You can now place the enclosed upholstery section in the gap thus created. (ill. 4)



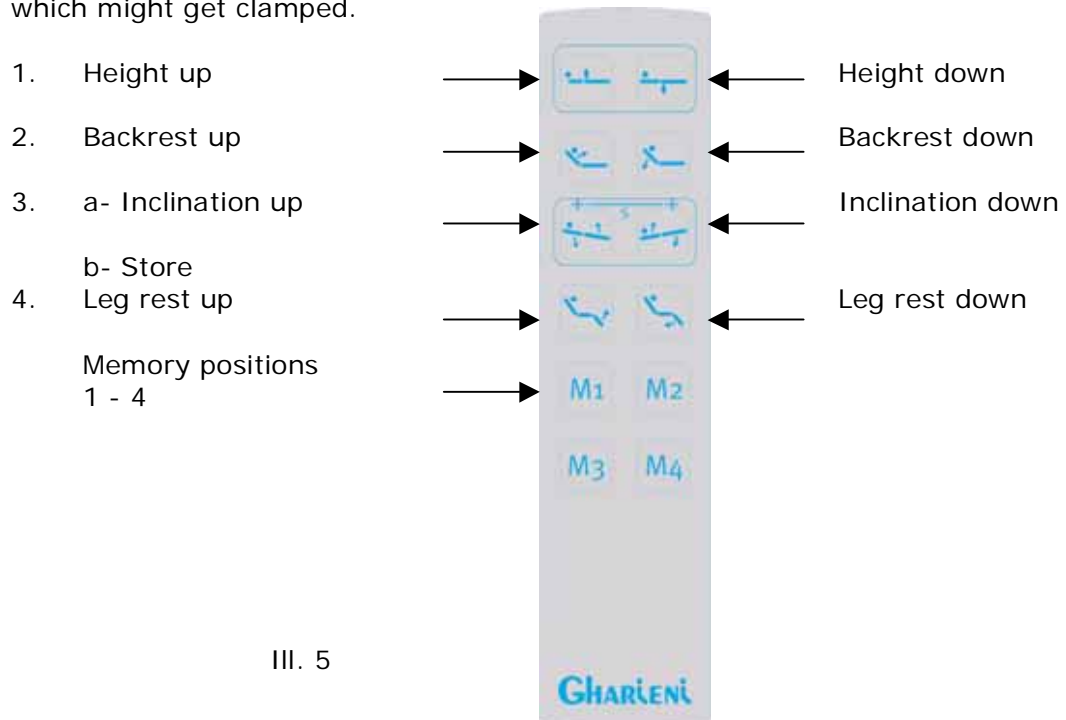
III. 4

3.2 Hand switch

The hand switch is a low-voltage electric switch (24V) (ill. 5), used to operate the electrically controlled functions. The four motors can be adjusted individually, as described above, by simply pressing a button (pressing and holding it).



Danger of injury! While adjusting the bed to the optimum treatment position for your customer, make sure that there is nothing between the parts of the bed which might get clamped.



III. 5

For reasons of safety, the treatment bed will only move while you are pressing a button on the hand switch. The movement stops immediately when you release the button.

3.3 Memory function

You can use the memory function to program the buttons M1, M2, M3 and M4 on the hand switch (ill. 5) with up to 4 frequently used positions.

Proceed as follows:

First adjust the required position in the normal way.
Then simultaneously press both "S" buttons (third row of buttons) for about one second to store the position (ill. 5).



Immediately after this, press the required memory position button M1, M2, M3 or M4. A short beep will now sound to confirm that the position has been stored.



4.0 Settings

4.1 Height

The height of the Gharieni Amphibia can be adjusted from approx. 55 cm to approx. 90 cm.

The access height is the lowest seat height. It is approx. 55 cm. This height enables the customer to comfortably sit or lie on the bed from the side.

The height adjustment is operated electrically. Press the corresponding function key on the hand switch (first row of buttons on the hand switch, see chapter 3.1 Hand switch).

4.2 Backrest

This is also adjusted electrically. The backrest inclination can easily be adjusted by means of the hand switch (second row of buttons on the hand switch, chapter 3.1 Hand switch).

4.3 Headrest

This can be adjusted manually and continuously. The side lever for the gas spring enables the headrest angle to be set as required (positive and negative through an adjustment range of 30°). Release the lever to lock the headrest into position (ill. 6).



(ill. 6)



Override function: This enables the gas spring to be extended without having to operate the lever. This means that the headrest and the armrests can be raised from their lower positions without operating the gas spring lever.

The headrest cushion has a nose slit for back massages. The nose slit cover is easy to remove (ill. 7).



Ill. 7

4.4 Armrests

The individual armrests of the Gharieni Amphibia can be lowered manually by means of gas springs, similar to the headrest. Simply press the lever on the relevant side and exert slight pressure to adjust the armrests downwards. Pull the armrest up by hand to raise it (**override function**). This makes the bed extremely suitable for back massages (ill. 8).



(ill. 8)

4.5 Seat inclination

The seat inclination is also adjusted electrically. It supports the complete thigh area to the knee joint (third row of buttons on the hand switch, chapter. 3.1 Hand switch).

4.6 Leg rest

The leg rest of the bed can be adjusted independently of the backrest and the inclination using the hand switch; it supports the entire calf section from the knee downwards (fourth row of buttons of the hand switch, chapter 3.7 Hand switch).

The Amphibia offers many possible adjustments, making it suitable for many different uses.



Again, when lowering the leg rest, there must not be any objects under the leg rest. "Danger of crushing"

Regardless of the lying surface adjustment, never use the head, back, leg or foot rests to support your full body weight.

In general, no extreme force should be exerted on these parts! If this instruction is not observed, the support structure of the bed may be damaged, resulting in the risk of personal injury due to the chair tipping over and breaking.



Danger of injury! While setting the optimum treatment position for your customer, make sure that there is nothing between the parts of the bed which might get clamped.

For reasons of safety, the treatment bed will only move while you are pressing a button on the hand switch. The movement stops immediately when you release the button.

4.7 Extending runners

The Amphibia bed has a special construction enabling runners to be extended in order to move the bed. Proceed as follows:

First move the backrest up (as described) using the hand switch. Remove the cover from under the backrest so that you can easily reach the lifting device (see ill. 9).

Now pull the lever towards you or push it all the way to the other side.

The runners are extended and the bed can be moved. Note! Do not move the bed yet!



Runners retracted



Pull the lever



Runners extended

III. 9

First pull the mains lead from the wall outlet, wind it properly and stow it away so that the bed cannot run over it while being moved. Do not retract the runners until the bed is in its required position and you have ensured that the lead cannot be damaged.



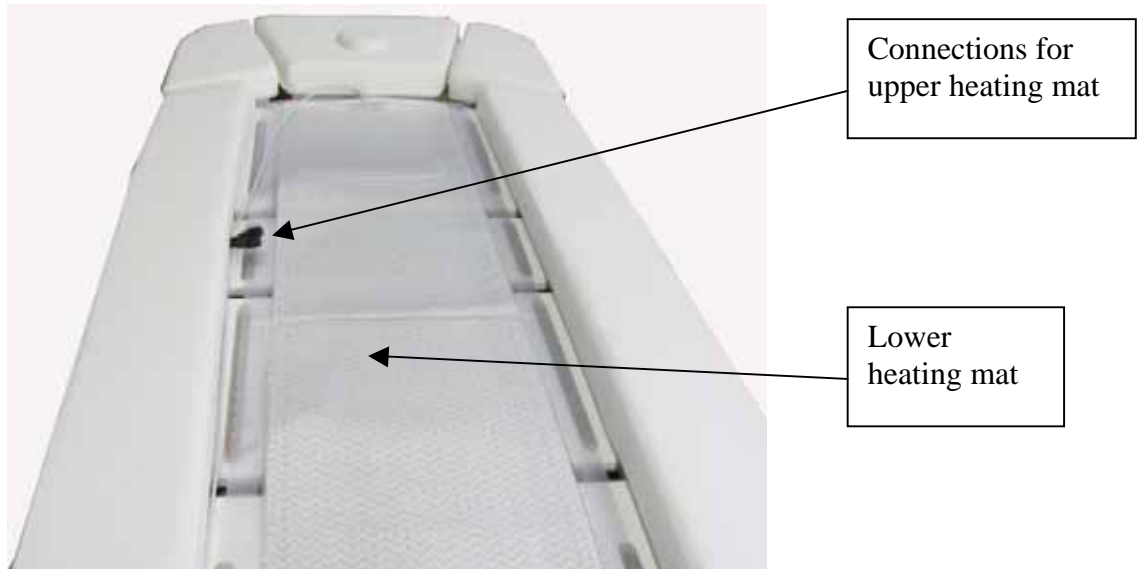
Always make sure that the bed is standing on its stationary adjustable feet. If the bed is only standing on the moving runners there is a risk of it rolling away, e.g. when somebody leans against it.

Never extend the runners while there is somebody on the bed

This rolling mechanism is **not** suitable for transporting people.

5.0 Electric Triple Airback with heating and light

The lying surface (water cushion) of the Amphibia has two heating mats. The lower heating mat (HML) is located under the water cushion (ill. 10). It serves to heat the water. The upper heating mat (HMU) is located above the water and serves to quickly warm up the cold lying surface (ill. 11)



III. 10



III. 11

5.1 Filling the water cushions

The water cushions can be removed individually and filled with water. The cubic capacity of the large cushion is approx. 14.5 litres and that of the small cushion is approx. 6.5 litres. The illustration 12 and 13 shows how much water have to be in the water cushion – the red line symbolized the water surface.



III.12: large water cushion



III.13: small water cushion

Fill the cushions with mains water (distilled water) to which anti-algae liquid (*conditioner*) has been added.

Mixing ratio: approx. 25ml for the large cushion
 approx. 12.5 ml for the small cushion

Replace the water every six months, but no later than once a year.



Check the water cushions for leaks after filling them with water.



Water conditioner (enclosed) must be added to the water.
The water cushions have a pocket (over the water cushion), into which the enclosed upper heating mat can be inserted.
The upper heating mat has two connection pipes; the longer of the two pipes must point toward the foot end.
After the upper heating mat has been slid over the water cushions, both connections of the upper heating mat must be connected to the connection bushes of the lower heating mat (ill. 10).

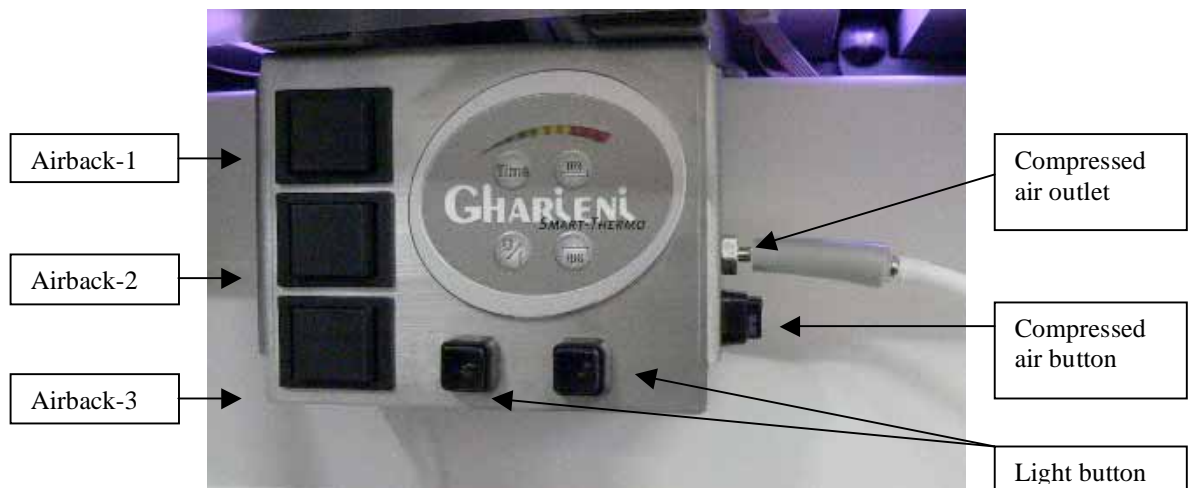


The heating only works when both heating mats (upper/lower) have been connected.



Only use the heating mats in combination with the filled water cushions, otherwise there is a risk of the lower heating mat overheating.
The heating cables must be run under the water cushions, on their sides, without there being any tension on the cables.

Both heating mats can be controlled from the heating control panel (ill.14). The heating parameters can be set according to your own preferences.
Check the actual temperature before using the bed and unplug the bed from the mains supply if it will not be used for some time (e.g. during the night).



III. 14 Control panel



Do not use the THERMO option in the following situations: with customers who have a pacemaker, who are pregnant, who suffer from thrombosis or from pains whose cause has not been identified. Only use the option on healthy people.



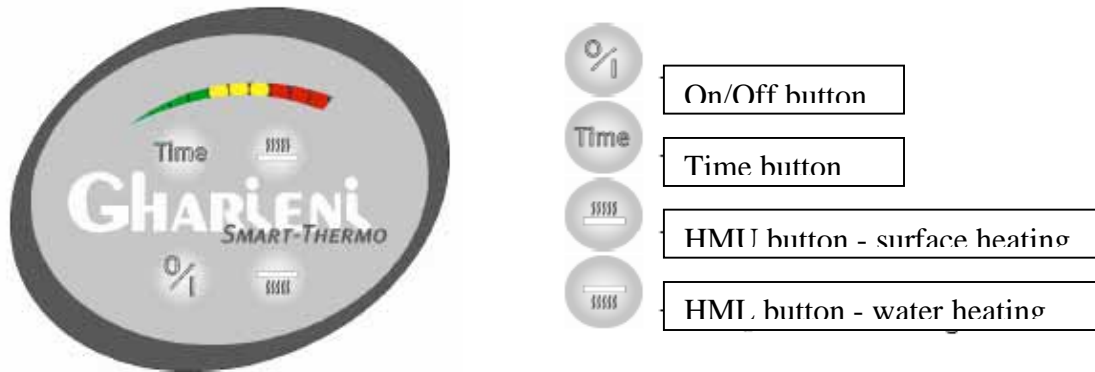
We recommend unplugging the mains plug during long intervals between uses (e.g. during the night).



Caution - risk of fire:

The bed must not be covered by objects such as blankets, towels, clothes etc. while the heating is on, otherwise heat may accumulate and damage the bed.

5.2 Heating



III. 15

The temperature setting is shown by the 10-part LED bar:

low temperature - green LEDs 1..4,
medium temperature - yellow LEDs 5-7 and
high temperature - red LEDs 8-10.

The temperature ranges of the lower (water) and upper (surface) heating mats differ (see below).

5.3 Switching on/off

Switching on:

Step 1: Press the "On/Off" button to switch on the heating system. The LEDs will flash.

The indicator flashes to indicate that the upper heating mat is ready for use. This means that the heating mat is still off.

Step 2: Press the "HMU" (upper heating mat) button to switch on the upper heating mat. The heating starts to heat up with the parameter that was last set. Press the "ON/Off" button to switch off the heating mat. The LEDs will flash.

Step 3: Press the "HML" (lower heating mat) button to switch on the lower heating mat. The heating starts to heat up with the parameters that were last set.

Press the "ON/Off" button to switch off the heating mat. The LEDs will flash.

Switching the heating system off:

Step 1: Switch off the lower heating mat. The LEDs will flash.

Step 2: Switch off the upper heating mat. The LEDs will flash.

Step 3: Press the On/Off button. The heating system is off. The display LEDs are extinguished.

5.4 Setting the upper heating mat temperature

Press the "HMU" button repeatedly to select the temperature of the upper heating mat. Every extra LED that lights up means an increase by 1° Celsius.

The first green LED represents **28° C**.

The basic setting is approx. 33° C (6 LEDs lit up)

If all 10 of the LEDs have lit up, the temperature setting is **37° C**.

You can switch off the heating by means of the "On/Off" button → the LEDs will flash.

5.5 Setting the water cushion temperature

Press the "HML" button repeatedly to select the water heating temperature.

Because the tenth LED is used to indicate this operating mode, it is not available for entering the parameters!

Every extra LED that lights up again means an increase of approx. 1° Celsius.

The first green LED represents **23° C**.

The basic setting is approx. 28° C (6 LEDs lit up).

If all 10 of the LEDs have lit up, the temperature setting is **32° C**.

You can switch off the heating by means of the "On/Off" button → the LEDs will flash.

5.6 Displaying and setting the heating duration

Different operating times can be set for both heating mats.

First press the "HMU" or "HML" buttons to select the relevant heating mat.

When the "Time" button is first pressed, the remaining heating time (residual time to switch-off) is indicated.

After a delay of **a couple of seconds** the display automatically switches over to the temperature display.

Repeatedly press the "Time" button to change the heating time of the heating mat. The number of LEDs indicates the times as follows:

- Surface heating (upper heating mat)

Every LED represents 10 minutes; the basic setting is 60 minutes. Ten LEDs equals the maximum heating time of 100 minutes. The residual time can be increased or decreased while heating takes place.

- Water heating (lower heating mat)

Every LED represents 30 minutes. The basic setting is 4.5 hours. Nine LEDs can be used to enter the setting – the tenth LED indicates the operating mode (lower heating).

5.7 Electric Airback

There are three air cushions (Airbacks) under the water elements. Airback-1 and Airback-2 are located in the lumbar area. Airback-3 is located in the thigh zone (ill-16). An electric pump enables the Airbacks to be inflated.

If you press the first button (ill-14) Airback number 1 in the backrest is inflated. The pump is then active. The Airback is deflated by moving the same button into the opposite direction. Airbacks 2 and 3 are operated according to the same principle.



Ill. 16

5.8 Lighting

To set the lighting modes the control panel features one button for the upper and one for the lower lights (ill.14). The following functions can be selected by pressing these buttons:

- 1st step: automatic colour change
- 2nd step: individual colours
- 3rd step: switch off



Only use the lower row of lights when using the bed 'dry' (foam cushion instead of water cushions). Otherwise there is a risk of heat accumulating.

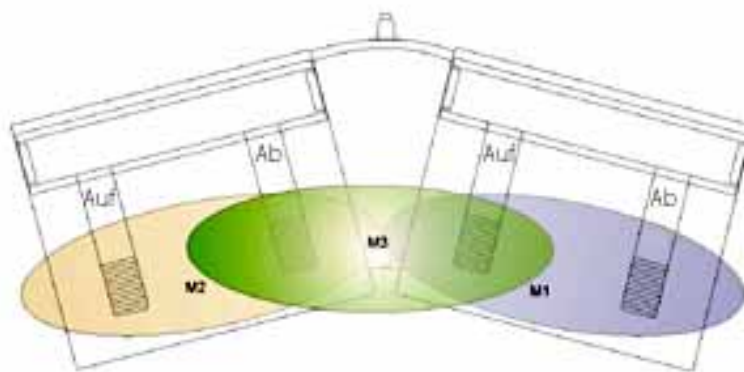
5.9 Compressed air for accessories (Ayurveda mat)

There is a facility where a hose can be connected on the side of the control panel (ill.12). Compressed air can be tapped by pressing the button under this facility.

6.0 Options

6.1 Foot switch

The foot switch (see ill. 17) can be connected as an option, in addition to the hand switch. The right-hand foot switch is used to adjust the height; the left-hand foot switch adjusts the backrest. Observe the "Up" and "Down" indications in the picture for the directions of movement. Three of the four memory positions (M1, M2 and M3) can be called up by foot switch operation by pressing the foot-operated buttons in pairs at the same time.



III. 17

6.2 Protective cover with inspection openings



III. 18

The terry-cloth cover consists of 5 parts. Two inspection openings on the sides enable the LED light to penetrate properly.

6.3 Ayurveda liner

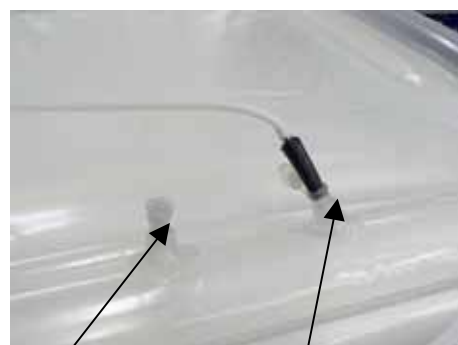
The Ayurveda bed has been designed specifically for oil treatments. It has an opening in the head part to drain the oil (ill. 19). The pushbuttons on the side (ill. 19a) keep the mat in position.

The inflatable side rim can be inflated with compressed air (ill. 14) (approx. 3 min) by pressing the compressed air button. Two valves which can be sealed to inflate or deflate the rim are located at the foot end (ill. 19b).

A hose is enclosed to connect the Ayurveda mat to the air supply.



Pushbutton



Air outlet

Air inlet

7.0 Cleaning and maintenance

Clean the housing and the fittings with a damp cloth or sponge and some soap.



Never immerse the bed or any parts of it in water.

The mains lead to the mains socket must be checked for damage at regular intervals and must be changed by our Customer Service Department (or an electrician) if damage is found.

7.1 Upholstery - cleaning / disinfection

Covering the upholstery:

Always cover the bed with a terry-cloth cover with light lines (optional) before use. This will make the customer feel more comfortable. In addition, a cover is more hygienic and adds to the lifetime of the upholstery.



To clean the upholstery, first pull the mains plug; use some lukewarm water and regular soap for cleaning.



Never use chemical detergents such as methylated spirit, acetone, alcohol or similar products. These products may permanently damage the upholstery.

Hard to remove stains:

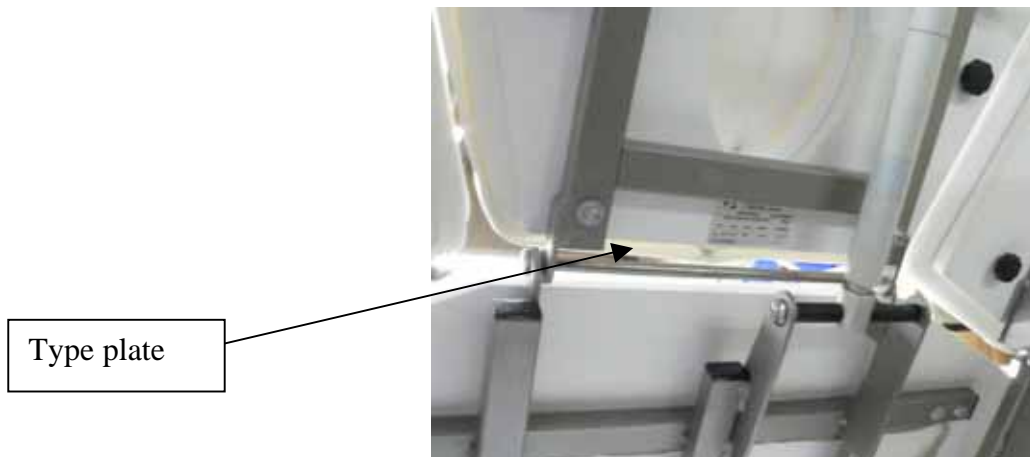
Most fresh stains can be removed using a clean cloth and some alcohol diluted in water (alcohol content less than 30%). Since we make use of different forms of upholstery which may consist of different materials, we need details of the specific situation in order to tell you whether a given disinfectant is suitable for the material used. Contact us for this.

7.2 Guarantee provisions

Gharieni GmbH supplies all new equipment subject to a 2-year guarantee. Wearing parts (such as e.g. incandescent lamps, UV lamps, consumables etc.) are not covered by this guarantee. Damage or loss due to unprofessional or improper use, non-compliance with the provisions of the instructions for use and/or gross negligence is not covered by guarantee either. In addition, the guarantee is invalidated if stickers (such as e.g. the type plate, instruction notices etc.) are removed or if appliances or parts of appliances are opened without this being explicitly allowed in the operating instructions (e.g. for cleaning).

7.3 The type plate

The type plate is located under the headrest of the bed. It must never be made illegible nor removed! This might invalidate the guarantee. III. 20



III. 20

8.0 Drive failures / remedies

	Possible failures	Remedies
1. None of the motors work	- No mains connection available	- Check the mains connection
	- Mains connection lead defective	- Replace the mains connection lead
	- Hand switch or motor connection plug not plugged in correctly	- Check that the plug connection is correct
	- Hand switch defective	- Remove the hand switch
	- Fuse in the transformer defective	- Replace it by a new fuse
	- Control box: system fully down	- Replace
2. An individual motor does not work	- Motor connection plug not plugged in correctly	- Check that the plug connection is correct
	- Hand switch defective	- Remove the hand switch
	- Control box defective	- Replace the control box
	- Motor connection lead or plug defective	- Replace the motor lead
	- Motor defective	- Replace the motor

--	--	--

9.0 Technical specifications

Feature	Value
Total length	approx. 202 cm
Standard bed surface width (alternative)	approx. 85 cm (80 or 90cm)
Width of the basis (substructure)	approx. 55 cm
Height adjustment range	approx. 55 cm to approx. 90 cm
Backrest inclination	0° to 75°
Headrest inclination	+30° to -30°
Lying surface - lifting capacity (max. safe operating load)	160 kg
Backrest - lifting capacity (max. safe operating load)	75 kg
Total weight without water cushions	approx. 125 kg
Total weight of water cushions	approx. 45 kg (45 litres)
Adjusting motors with control system:	
Primary transformer output	230 V / 50 Hz / 120 VA max
Secondary transformer output	24 V =
Fuse	3 A, slow-acting
Activation duration (drive)	10% max. 2 min / 18 min
Mains lead	2.5 metres, straight, black
Hand switch	Coiled cable, grey
IP category	I
Safety class against electric shock	type B
Protection against substances penetrating	IP 51
Electric Triple Airback with heating and light	
Primary transformer output	230 V / 50 Hz / 250 VA max
Secondary transformer output	2x12 V / 12.5 A
Primary fuses	1.6 A, slow acting
Electric Triple Airback with heating	
Total output:	370 VA. max

Environmental conditions for storage and transport

Condition	Value
Temperature	Ambient temperature -10°C to 50°C
Air pressure	700 to 1060 hPa
Relative humidity	20% to 90% @ 30°C, non-condensing

Ambient conditions during use

Condition	Value
Temperature	Ambient temperature +5°C to 40°C
Air pressure	700 to 1060 hPa
Relative humidity	20% to 75% @ 30°C, non-condensing

KONFORMITÄTSERKLÄRUNG
 EC DECLARATION OF CONFORMITY
 DECLARATION CE DE CONFORMITE
 Wir / We / Nous

Electro-Medical Gharieni GmbH
 (Hersteller/Manufacturer/Fabricant)
Gutenbergstr. 40
D-47443 Moers
Germany

erklären, dass das Produkt
 declare that the product
 déclarons que le produit

(Typ oder Modell, Bezeichnung / Type or model, name / Type ou modèle, nom)

MLW Amphibia

produziert wurde entsprechend den Vorgaben der

Niederspannungsrichtlinie **2006/95/EG**,
 EMV- Richtlinie **2004/108/EG**,
 Maschinenrichtlinie **2006/42/EG**.

is produced in accordance with the requirement specified in

Low Voltage Directive (LVD) **2006/95/EG**,
 electromagnetic compatibility **2004/108/EG**,
 Safty of Machinery **2006/42/EG**.

est produit conformément aux exigences de la directive

Directive basse tension **2006/95/EG**,
 Compatibilité Electromagnetique **2004/108/EG**,
 Directive machines **2006/42/EG**.

Moers, 23.06.2010

Ort und Datum
 Place and date
 Date et lieu



Geschäftsführer: S. Gharieni
 Executive president
 Directeur

EC Declaration of Conformity

Issued	Modification (pages)	Date
First edition	-	Nov. 2007
Second edition	15	Aug. 2011

10.0 Appendix-1:

Äußere Abmessung:
Amphibia

