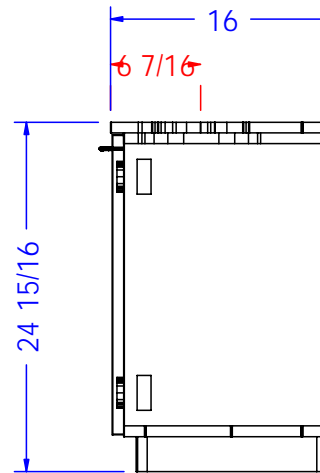
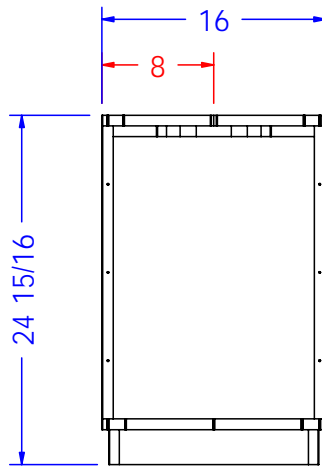
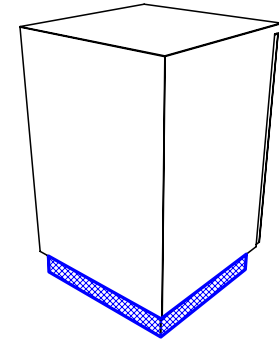
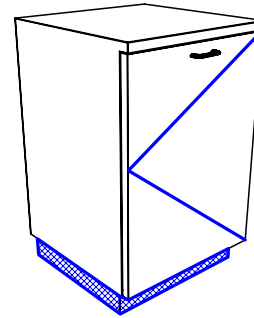


**DRAIN CENTER**



See page 2 to 4 for bowl and fixture instructions.

#### Finish Schedule - T3-16

Face Color -  
Top Color -  
Toe Color -  
Reveal / Accent Color -  
Hardware - AMATI PULLS  
Interior - BLACK MELAMINE  
Other (Specify) -

#### General Notes:

1. All counter tops are to be made removable wherever possible.
2. Items must be broken into manageable sections For Shipping. Mark For Ease Of Reassembly.
3. Install Shipping Cleats Wherever Possible To Prevent Shipping Damage.
4. Purchased items Must Be Trial Fit Before Shipping.



Collins Manufacturing  
2000 Bowser Road  
Cookeville, TN 38506

Title: **T3-16 Plumbing Spec**

Size: **NTS**

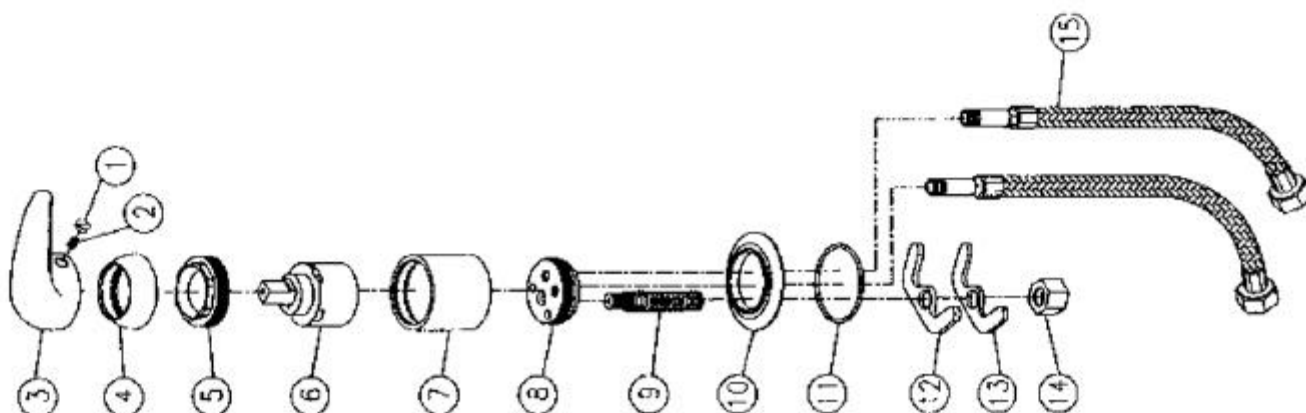
Drawing Number: **Job**

Drawn By: **ZANE**

Date: **10/23/07**

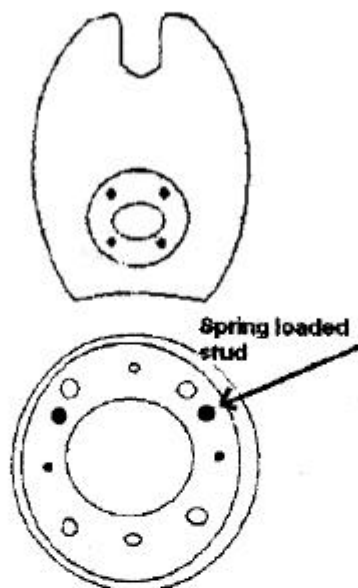
Sheet **4 of 4**

## ILLUSTRATED PARTS LIST



01. INDEX BUTTON
02. HANDLE SCREW
03. HANDLE
04. ESCUTCHEON
05. ESCUTCHEON NUT
06. CARTRIDGE VALVE
07. VALVE SLEEVE
08. DRAIN
09. SPOUT ADAPTER
10. SPOUT BASE
11. O-RING
12. RUBBER WASHER
13. BRASS WASHER
14. SUPPLY NUT
15. STEEL HOSE

- Parts List:
1. Tilting mechanism
  2. Bolts & lock washers to attach the tilt
  3. Faucet
  4. Spray Hose
  5. Vacuum Breaker
  7. Strainer Basket
  8. Flexible DischargeHose



Note the orientation of the tilt mechanism. The spring-loaded studs must be toward the front of the bowl.

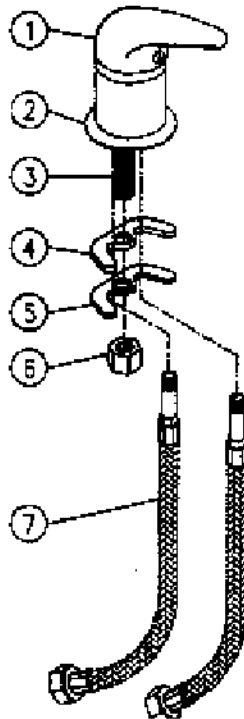
## Collins CB21 Tilting ABS Bowl

## Assembly Steps &amp; Instructions:

1. Install strainer assembly in bowl.
2. Attach tilt-mechanism to bowl using four bolts & lock washers, furnished. See note on orientation.
3. Set bowl with tilt-mechanism on cabinet aligning holes.
4. Apply & tighten the nuts on the two side studs.
5. Front & back studs also serve as stops for the tilt mechanism. Set front stud at desired height & tighten. Repeat for rear stud.
6. The spring-loaded bolts control the amount of tension on the tilt. To increase tension, tighten the nuts.

## CHROME LEVER-HANDLE FAUCET

### INSTALLATION GUIDELINES



1. Unscrew the fixed parts ( such as (#6) fix nut, (#5) brass washer, (#4) rubber washer ) from the faucet.
2. Have the two (#7) flexible hoses screwed to the hot/cold water outlet accordingly.
3. Put the (#1) Main body and (#2) Base of the main body from the top to line up with the reserved hole on basin.
4. From the bottom, secure the (#4) rubber washer, (#5) brass washer in the order by screwing the (#6) fix nut to the (#3) retaining mounting tube.

## CLEAN & MAINTENANCE

In order to keep the faucet in shiny and clean condition, Please keep the necessary clean & maintenance on time.

1. Use only clear water to clean faucet then follow by the soft cotton-cloth to dry it.
2. Do not use any rough cloth or paper towel that may polish or scratch the body of faucet.
3. Do not use any acid cleaner or soap(ALKALINE) applying on the body of faucet.

DRAIN ASSEMBLY

# CB21 One-Piece Tail Stock & P-Trap

FLEXIBLE  
TAIL STOCK

DRAIN LOCATED  
18" ABOVE FLOOR

— 18"

FORMED  
P - TRAP

