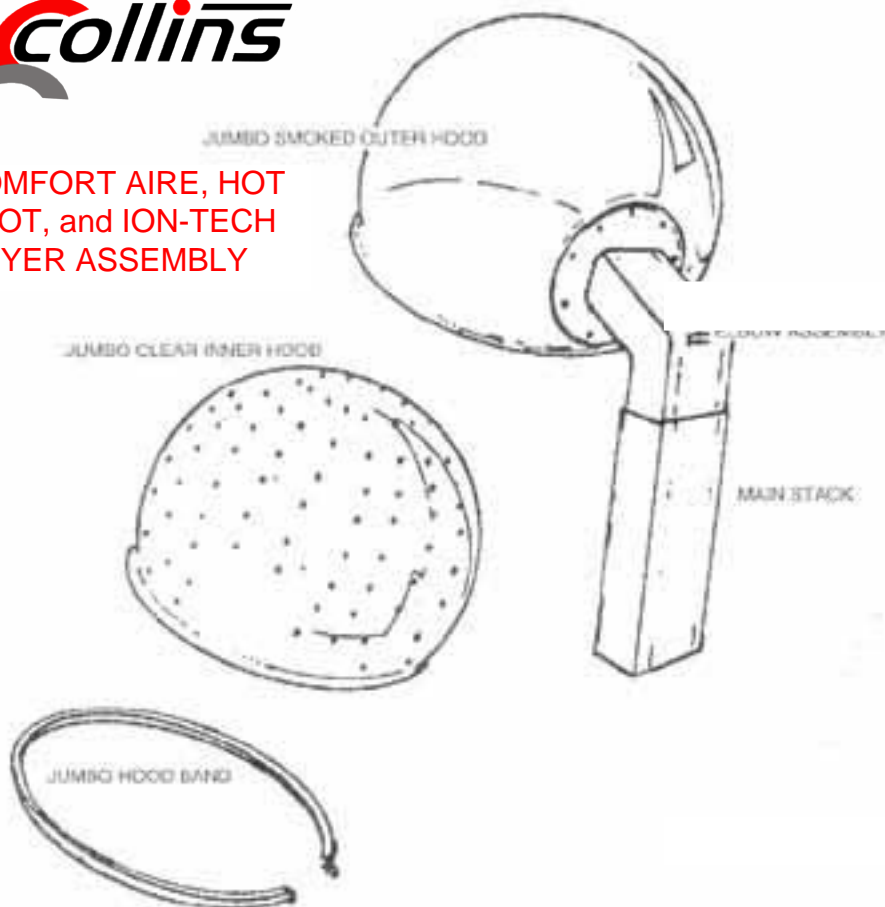


IMPORTANT

Directions for Assembly of Inner and Outer Hoods



COMFORT AIRE, HOT
SPOT, and ION-TECH
DRYER ASSEMBLY



1. Remove Inner and Outer Hoods from box and plastic bag.
2. Remove Hood Band from Outer Hood.
3. Insert Inner Hood into Outer Hood. Be sure to align slot in Flange on front part of Hood so that non-perforated sections of Inner Hood will be to the sides. (This is to protect customers' ears from heat.)
4. Install Hood Band.

OPERATING, USAGE, & MAINTENANCE INSTRUCTIONS for your HAIR DRYER

INSTALLATION

- Please use proper care when mounting your dryer.
- Simply plug the supply cord into any 110-115 volt 60 cycle AC outlet.
- **Be sure dryer is AT LEAST 6 to 8 inches from the wall, to prevent damage to hood when it is raised.**

HOW TO OPERATE YOUR HAIR DRYER:

1. Raise hood to desired position for seating patron.
2. For INSTANTANEOUS HEAT, LEAVE HOOD UPRIGHT FOR 10 SECONDS before lowering. This builds up warm air immediately and eliminates cold stream of air hitting wet head. Place patron under dryer, lower hood to proper position for drying.
3. Set the dryer heat control to the degree of heat desired for comfortable drying.
4. Set the timer to the desired time.
5. Do not tamper with the timer or thermostat on your dryer.

USER INSTRUCTIONS:

1. Your dryer is equipped with a heat sensing thermostat. If your dryer malfunctions and becomes too hot, the thermostat will shut off the heating element. After cooling to proper temperature, element will again operate normally.
2. If dryer will not be used for a period of time, please wrap cord around neck of hood and store dryer in a cool dry area.
3. This is a commercial use dryer, and all servicing should be performed by an authorized representative.

MAINTENANCE

Caution: Remove plug from wall socket before attempting any service or repairs.

Your dryer is equipped with low-wattage heating elements ample for dependable drying and economical operating costs. Basically, the principle involved in this dryer is to regulate temperatures and air in the correct quantities in order to dry properly, rapidly and comfortably.

To clean your dryer, wipe with damp cloth only.

This dryer is equipped with a foam filter. To operate efficiently, it is imperative that the flow of air intake be free and not obstructed by dirty or clogged filters. For best results, inspect filter every week and clean if necessary. Cleaning is simple and rapid.

1. Remove filter from dryer.
2. Wash in warm soapy water and rinse in clear water.
3. Shake out excess water.
4. Replace filter.

To clean hood assembly:

1. Snap back hook on latch of the trim ring. The trim ring will spring apart and slip off hood. The inner hood will drop out.
2. Wash in warm water with a mild detergent.
DO NOT use solvents to clean or wash hoods.
3. Remove outer hood with stack; use the same procedure for clean as used for the inner hood.
4. Lay outer hood and stack on a flat surface.
5. Insert inner hood and replace trim ring. Position latch so that it will be at the back of the hood. Latch hook on trim ring.

SAVE THESE INSTRUCTIONS

Your Commercial Dryer Warranty

Your Hair Dryer has been carefully made by skilled workers and subject to thorough inspection and tests before shipment.

It is warranted to the original purchaser to be free of defects in material and workmanship for a period of ONE YEAR from date of purchase.

By accepting this warranty the purchaser agrees that the obligation of the seller under this warranty shall be to repair or replace any part or parts found to be defective upon return of dryer or defective parts, transportation charges **prepaid**. Dryer or replacement parts will be returned, transportation charges **collect** to the original purchaser.

This warranty does not apply to the finish of the cabinet nor to the hood.

This warranty does not apply to the dryer or any part thereof which should reveal any tampering, misuse, accident or abuse, or use on electrical circuits other than those specified on the registered number plate located on back of dryer. Nor shall the seller be liable for damage to any person or to any property other than the dryer covered by the warranty.

Seller reserves the right to make changes in design and improvements in its dryers without imposing any obligation upon the Company to install same on products heretofore manufactured.

No person is authorized to change any of the terms of this warranty.

HDP2141/10-03



IMPORTANT SAFETY INSTRUCTIONS

When using electrical appliances, basic safety precautions should always be followed. Including the following:

READ ALL INSTRUCTIONS BEFORE USING

- KEEP AWAY FROM WATER -

DANGER!

As with most electrical appliances, electrical parts are electrically live even when the switch is off.

To reduce the risk of electrocution:

1. Always unplug appliance immediately after using.
2. Do not use while bathing.
3. Do not place or store appliance where it can fall or be pulled into a tub or sink.
4. Do not place in or drop into water or other liquid.
5. Do not reach for an appliance that has fallen into water. Unplug immediately.

WARNING: To reduce the risk of burns, electrocution, fire or injury to persons:

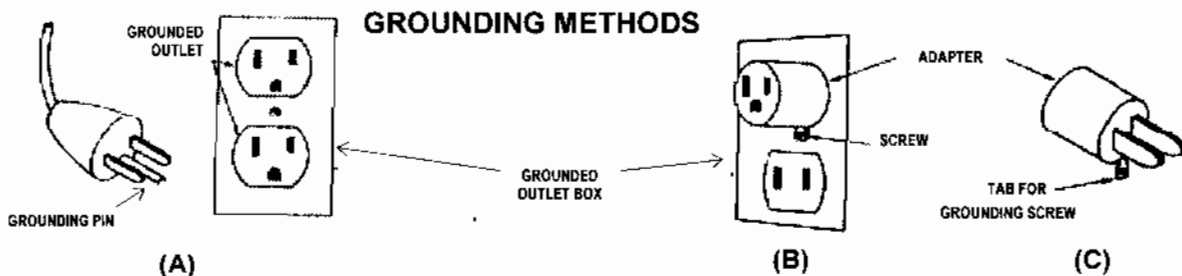
1. An appliance should never be left unattended when plugged in.
2. Close supervision is necessary when this appliance is used by, on or near children or invalids.
3. Use this appliance only for its intended use as described in this manual. Do not use attachments not recommended by the manufacturer.
4. Never operate this appliance if it has a damaged cord or plug, if it is not working properly, if it has been dropped or damaged, or dropped in water. Return the appliance to a service center for examination and repair.
5. Keep the cord away from heated surfaces.
6. Never block the air openings of the appliance or place it on a soft surface, such as a bed or couch, where the opening may be blocked. Keep the air openings free of lint, hair, etc.
7. Never use while sleeping.
8. Never drop or insert any object into any opening.
9. Do not use outdoors or operate where aerosol (spray) products are being used or where oxygen is being administered.
10. Do not direct hot air toward eyes or heat sensitive areas.
11. Connect this appliance to a properly grounded outlet only. See grounding instructions.

This appliance must be grounded. In the event of an electrical short-circuit, grounding reduces the risk of electric shock by providing a path of low resistance for the electric current. This appliance is equipped with a cord having a grounding wire with a grounding plug. The plug must be grounded into an outlet that is properly installed and grounded in compliance with all local codes and ordinances.

DANGER! *Improper use of the grounding plug can result in a risk of electric shock.*

GROUNDING INSTRUCTIONS:

1. If repair or replacement of the cord or plug is necessary, do not connect the grounding wire to either flat blade terminal. The wire with insulation having an outer surface that is green (with or without yellow stripes) is the grounding wire.
2. Check with a qualified electrician or serviceman if the grounding instructions are not completely understood, or if in doubt as to whether the appliance is properly grounded.
3. This appliance is for use on a nominal 120 volt circuit, and has a grounding plug that looks like the plug illustrated in sketch A. If a properly grounded outlet is not available, a temporary adapter (like the adapter illustrated in sketches B & C), may be used to connect the plug to a 2-pole receptacle (as shown in sketch B). The temporary adapter should be used only until a properly grounded outlet (sketch A) can be installed by a qualified electrician. The green rigid ear, lug, etc. extending from the adapter must be connected to a permanent ground such as a properly grounded outlet box cover. Whenever the adapter is used, it must be held in place by the screw.
4. If it is necessary to use an extension cord, use only a three-wire extension cord that has a three-prong grounding plug and a three-slot receptacle, that will accept the plug on the appliance.
5. Replace or repair a damaged cord.



SAVE THESE INSTRUCTIONS





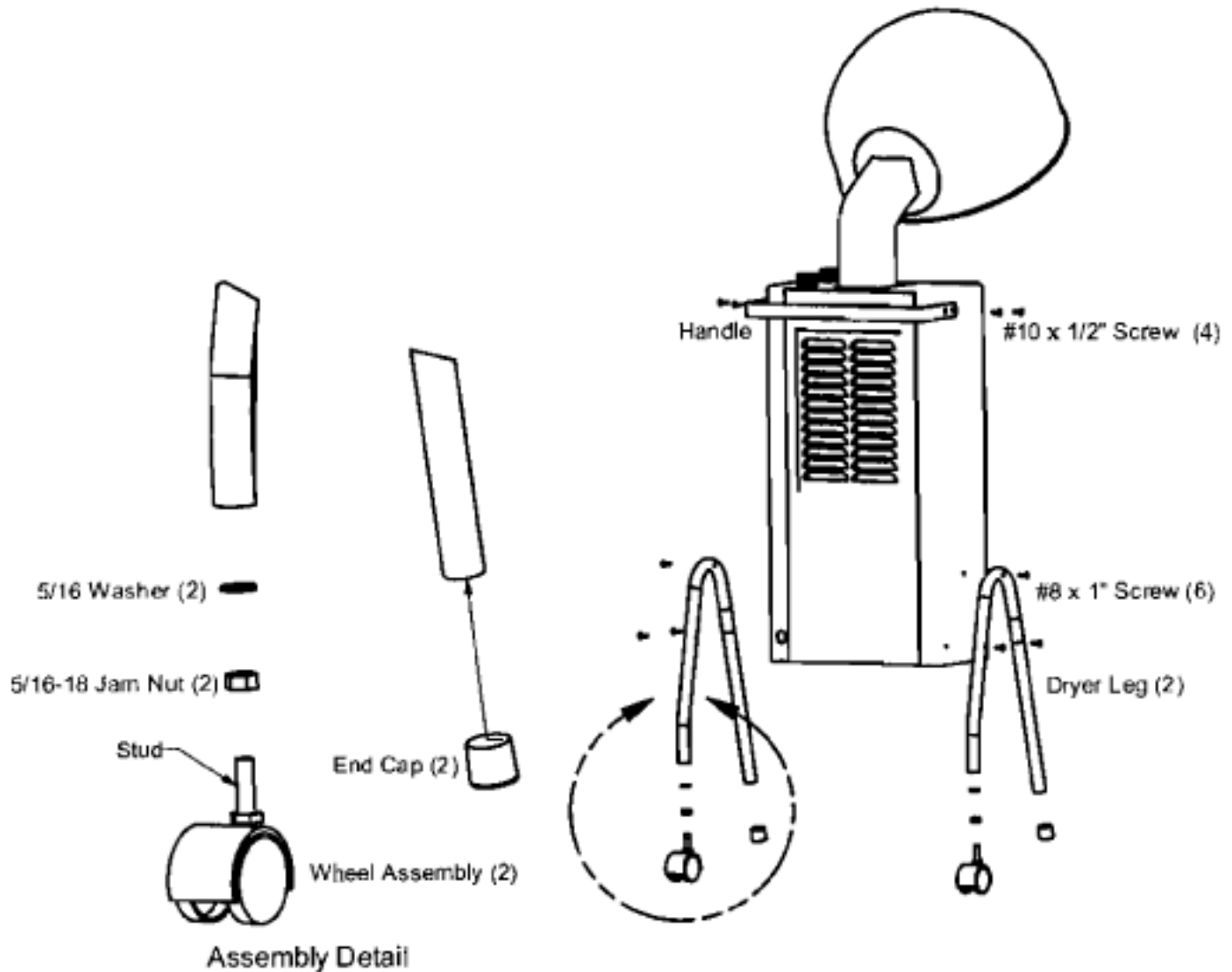
Assembly Instructions Hair Dryer Legs and Handle

Kit Contents:

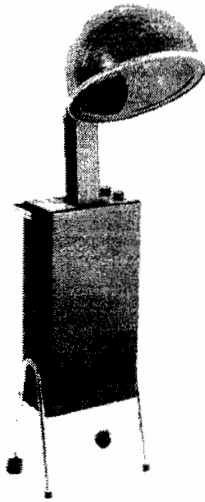
Qty	Description
2	Dryer Leg
2	End Cap, Black
2	Wheel Assembly
1	Handle
2	Washer, 5/16
2	Jam Nut, 5/16-18
6	Screw, #8 x 1
4	Screw, #10 x 1/2"

Steps for assembly:

1. Press black end cap onto end of each leg.
2. Screw jam nut onto wheel assembly stud, slip 5/16 washer over stud and screw into dryer leg.
3. Assemble both dryer legs onto hair dryer with #8 x 1" screws (3 per leg).
4. Set dryer upright on legs. Stabilize dryer by adjusting wheel stud. Once set, lock into position by securing the jam nut against the leg end.
5. Attach handle to the dryer with #10 x 1/2" screws (2 per side).



Model 1500 Hair Dryer



Features:

- UL/CSA approved
- 100 Watt Convenience Outlet
- Adjustable Thermostat including Perm Setting
- Electronic 60-Minute Timer with Cool Down Period
- All-Lexan Smoked Jumbo Inner & Outer Hoods
- Removable Air Filter
- Dryer Leg and Handle Sets Available as Accessory
- Made in USA

Dimensions:

Cabinet: 12-1/4" W x 23-3/4" H x 6-1/2" D
Hood: 12-1/4" (inside diameter)

Air Velocity:

375 / 400 CFM

Electrical Rating:

UL and CSA Approved
120 VAC, 60 Cycle, 8.0 Amps (without Convenience Outlet)
120 VAC, 60 Cycle, 9.7Amps (with Convenience Outlet)

Heat Output:

(Tested at 118 Volts, 8-8.5 Amps, 980 Watts)

<u>Thermostat Setting</u>	<u>Temperature</u>
Low	85° to 90°
Medium	98° to 110°
Perm	140° plus

BTU / Hour = 3334