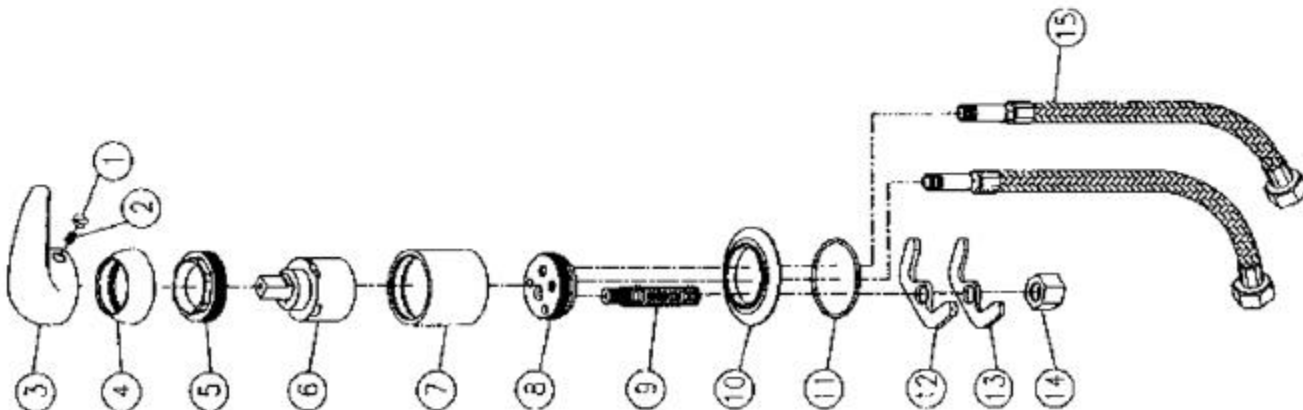
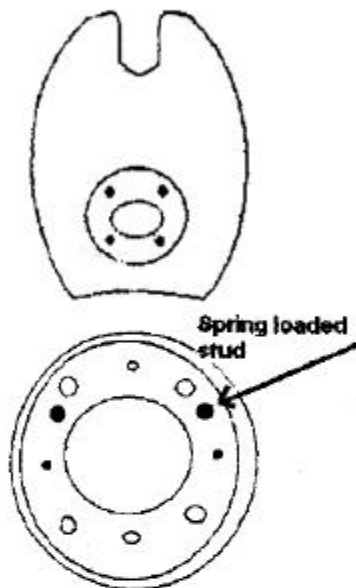


ILLUSTRATED PARTS LIST

- 01. INDEX BUTTON
- 02. HANDLE SCREW
- 03. HANDLE
- 04. ESCUTCHEON
- 05. ESCUTCHEON NUT
- 06. CARTRIDGE VALVE
- 07. VALVE SLEEVE
- 08. DRAIN
- 09. SPOUT ADAPTER
- 10. SPOUT BASE
- 11. O-RING
- 12. RUBBER WASHER
- 13. BRASS WASHER
- 14. SUPPLY NUT
- 15. STEEL HOSE



- Parts List:
1. Tilting mechanism
  2. Bolts & lock washers to attach the tilt
  3. Faucet
  4. Spray Hose
  5. Vacuum Breaker
  7. Strainer Basket
  8. Flexible DischargeHose



Note the orientation of the tilt mechanism. The spring-loaded studs must be toward the front of the bowl.

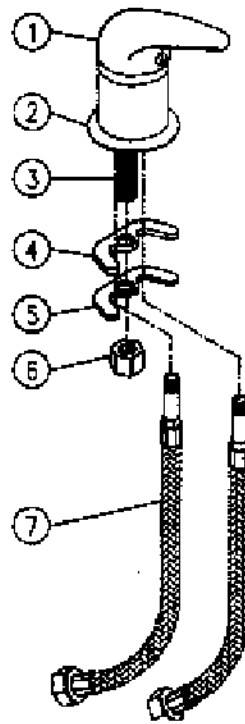
## Collins CB21 Tilting ABS Bowl

### Assembly Steps & Instructions:

1. Install strainer assembly in bowl.
2. Attach tilt-mechanism to bowl using four bolts & lock washers, furnished. See note on orientation.
3. Set bowl with tilt-mechanism on cabinet aligning holes.
4. Apply & tighten the nuts on the two side studs.
5. Front & back studs also serve as stops for the tilt mechanism. Set front stud at desired height & tighten. Repeat for rear stud.
6. The spring-loaded bolts control the amount of tension on the tilt. To increase tension, tighten the nuts.

# CHROME LEVER-HANDLE FAUCET

## INSTALLATION GUIDELINES



1. Unscrew the fixed parts ( such as (#6) fix nut, (#5) brass washer, (#4) rubber washer ) from the faucet.
2. Have the two (#7) flexible hoses screwed to the hot/cold water outlet accordingly.
3. Put the (#1) Main body and (#2) Base of the main body from the top to line up with the reserved hole on basin.
4. From the bottom, secure the (#4) rubber washer, (#5) brass washer in the order by screwing the (#6) fix nut to the (#3) retaining mounting tube.

## CLEAN & MAINTENANCE

In order to keep the faucet in shiny and clean condition, Please keep the necessary clean & maintenance on time.

1. Use only clear water to clean faucet then follow by the soft cotton-cloth to dry it.
2. Do not use any rough cloth or paper towel that may polish or scratch the body of faucet
3. Do not use any acid cleaner or soap(ALKALINE) applying on the body of faucet.

# CB21 One-Piece Tail Stock & P-Trap

DRAIN ASSEMBLY

FLEXIBLE  
TAIL STOCK

DRAIN LOCATED  
18" ABOVE FLOOR

— 18"

FORMED  
P - TRAP

