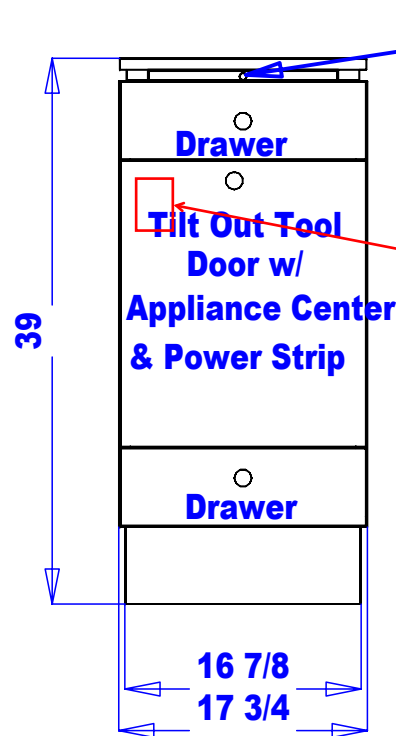
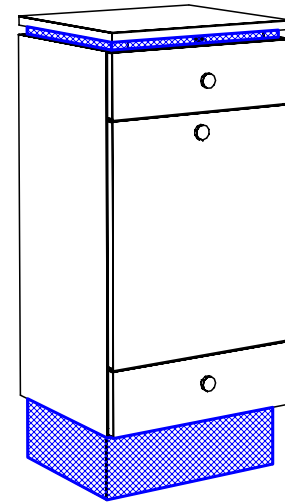


INSTALLATION INSTRUCTIONS

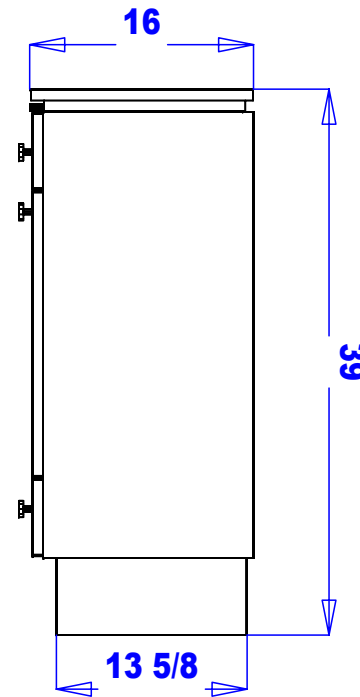
1. Flip all knobs/pulls from inside cabinet to outside, reference diagram 1.
2. Install Appliance Center see diagram 3 for details.
3. See power strip instructions below.



Breadboard

POWER STRIP INSTRUCTIONS

1. Mount power strip on mounting screws inside the cabinet at the location shown to the left.
2. Cord exits through grommet hole in the bottom/rear of cabinet.



Quantity -

Finish Schedule

- Face Color -
- Top Color -
- Toe Color -
- Pulls -
- Interior -
- Other (Specify) -

Installation Notes:

1. All hardware needed for assembly is included.
2. Large items are preassembled at the factory to ensure proper alignment. Items are then disassembled into manageable sections for shipping purposes and ease of reassembly.
3. Shipping cleats need to be removed before installation. These cleats are installed to prevent damage.

This drawing is the property of Collins Manufacturing Company and is protected under copyright law.

collins Collins Manufacturing
809 E 20th Street
Cookeville TN 38501

Title: **QSEp Island Station, Free Standing**

Size: # **401-18** Drawn By:

Date: **11/14/04** Sheet #: **4**